

READING, PENNSYLVANIA

AL-627 (FAA)

25051

WAAS CH <b>97412</b> <b>W36A</b>	APP CRS <b>004°</b>	Rwy Idg <b>5151</b> TDZE <b>343</b> Apt Elev <b>344</b>
--	------------------------	---

# RNAV (GPS) RWY 36

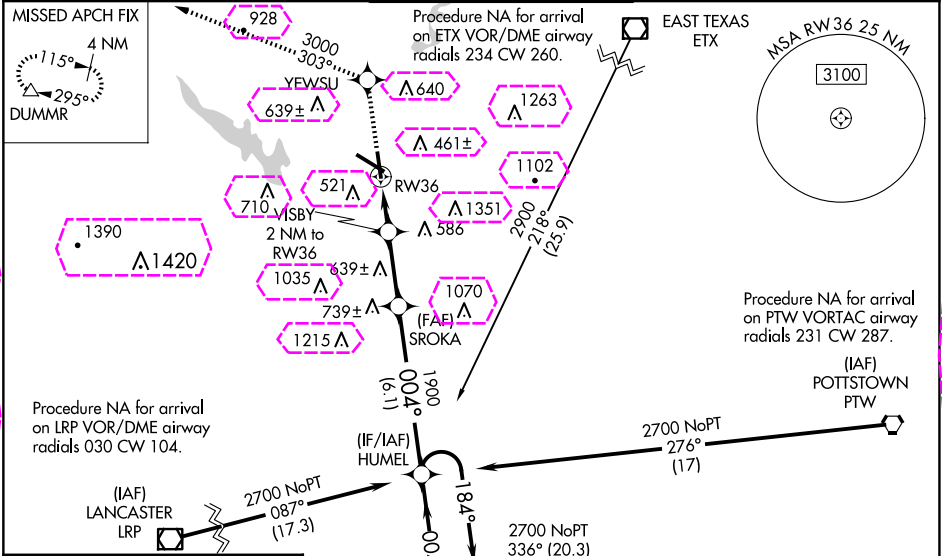
READING RGNL/CARL A SPAATZ FLD (RDG)

**▼** Night landing: Rwy 18, 31 NA. Inoperative table does not apply. Baro-VNAV NA when using Harrisburg Intl altimeter setting. For uncompensated Baro-VNAV systems, LNAV/VNAV NA below -15°C (5°F) or above 48°C (118°F). DME/DME RNP-0.3 NA. When local altimeter setting not received, use Harrisburg Intl altimeter setting and increase LPV DA to 715 feet and visibility ¼ SM, increase LNAV/VNAV DA to 928 feet and visibility ¼ SM and increase all MDAs 100 feet, and LNAV Cats C and D and Circling Cats B and C visibility ¼ SM.

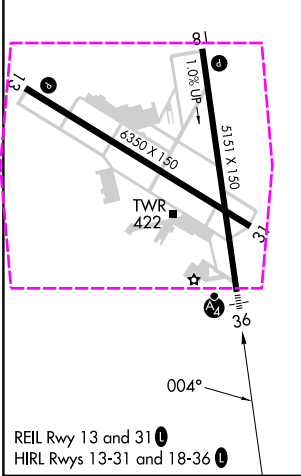
MALSF

MISSED APPROACH:  
Climb to 3000 direct YEWVSU and via 303° to DUMMR and hold, continue climb-in-hold to 3000.

ATIS <b>127.1</b>	HARRISBURG APP CON <b>125.15 257.9</b>	READING TOWER ★ <b>119.9 (CTAF) 0 288.3</b>	GND CON <b>121.9</b>	UNICOM <b>122.95</b>
----------------------	---	--	-------------------------	-------------------------



ELEV 344	TDZE 343
----------	----------



3000	YEWVSU	DUMMR	HUMEL	4 NM Holding Pattern
*LNAV only	VISBY 2 NM to RW36	SROKA	1900	184°
	*1.1 NM to RW36		1020*	004°
			1900	2700
	1.1	0.9	2.7 NM	6.1 NM
CATEGORY	A	B	C	D
LPV DA	622-1 279 (300-1)			
LNAV/VNAV DA	835-1¾ 492 (500-1¾)			
LNAV MDA	740-1 397 (400-1)			740-1¼ 397 (400-1¼)
CIRCLING	1020-1 676 (700-1)	1080-1 736 (800-1)	1280-2¾ 936 (1000-2¾)	1660-3 1316 (1400-3)

READING, PENNSYLVANIA

Orig-C 20MAY21

READING RGNL/CARL A SPAATZ FLD (RDG)

40°23'N - 75°58'W

# RNAV (GPS) RWY 36

NE-4, 10 JUL 2025 to 07 AUG 2025

NE-4, 10 JUL 2025 to 07 AUG 2025

READING, PENNSYLVANIA

AL-627 (FAA)

25219

WAAS CH <b>97412</b> <b>W36A</b>	APP CRS <b>004°</b>	Rwy Ldg TDZE <b>343</b> Apt Elev <b>344</b>
--	------------------------	---

# RNAV (GPS) RWY 36

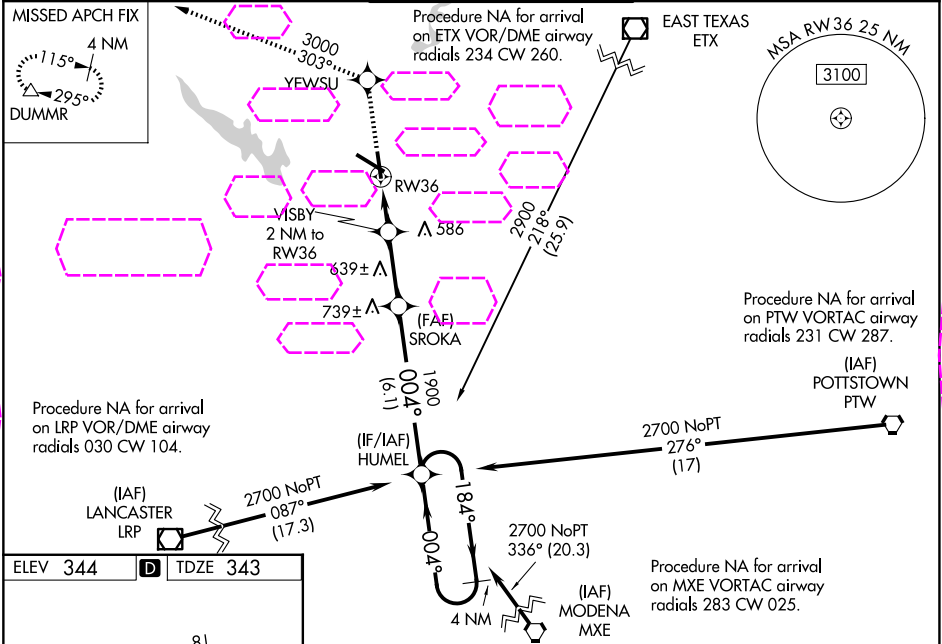
READING RGNL/CARL A SPAATZ FLD (RDG)

**⚠** Night landing: Rwy 18, 31 NA. Inoperative table does not apply. Baro-VNAV NA when using Harrisburg Intl altimeter setting. For uncompensated Baro-VNAV systems, LNAV/VNAV NA below -15°C (5°F) or above 48°C (118°F). DME/DME RNP-0.3 NA. When local altimeter setting not received, use Harrisburg Intl altimeter setting and increase LPV DA to 715 feet and visibility ¼ SM, increase LNAV/VNAV DA to 928 feet and visibility ¼ SM and increase all MDAs 100 feet, and LNAV Cats C and D and Circling Cats B and C visibility ¼ SM.

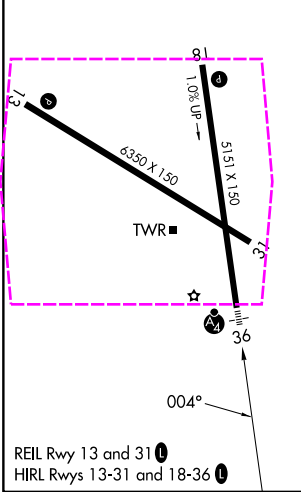
**MALSIF**

**MISSED APPROACH:**  
Climb to 3000 direct YEWSU and via 303° to DUMMR and hold, continue climb-in-hold to 3000.

ATIS <b>127.1</b>	HARRISBURG APP CON <b>125.15 257.9</b>	READING TOWER ★ <b>119.9 (CTAF) 0 288.3</b>	GND CON <b>121.9</b>	UNICOM <b>122.95</b>
----------------------	---	--	-------------------------	-------------------------



ELEV 344	TDZE 343
----------	----------



3000	YEWSU	tr 303°	DUMMR	4 NM Holding Pattern
* LNAV only		VISBY 2 NM to RW36		SROKA
* 1.1 NM to RW 36		1020*		1900
1.1		0.9		2.7 NM
6.1 NM				
CATEGORY	A	B	C	D
LPV DA	622-1 279 (300-1)			
LNAV/ VNAV DA	835-1¾ 492 (500-1¾)			
LNAV MDA	740-1 397 (400-1)			740-1¾ 397 (400-1¾)
CIRCLING	1020-1 676 (700-1)	1080-1 736 (800-1)	1280-2¾ 936 (1000-2¾)	1660-3 1316 (1400-3)

READING, PENNSYLVANIA

Orig-C 20MAY21

READING RGNL/CARL A SPAATZ FLD (RDG)

40°23'N - 75°58'W

# RNAV (GPS) RWY 36

NE-4, 07 AUG 2025 to 04 SEP 2025

NE-4, 07 AUG 2025 to 04 SEP 2025