

READING, PENNSYLVANIA

AL-627 (FAA)

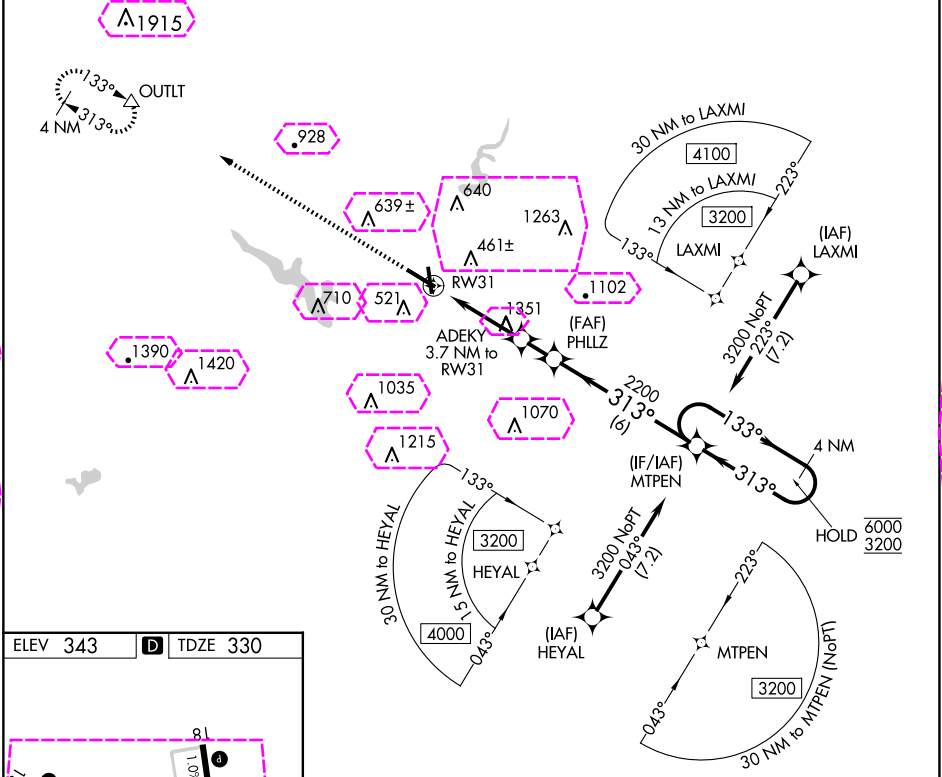
25051

APP CRS 313°	Rwy Idg 6350
	TDZE 330
	Apt Elev 343

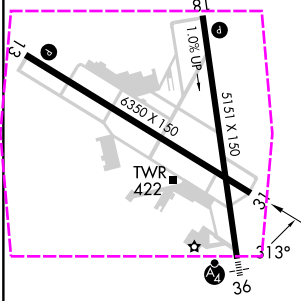
RNAV (GPS) RWY 31

READING RGNL/CARL A SPAATZ FLD (RDG)

RNP APCH - GPS.		MISSED APPROACH: Climb to 3200 direct OUTLT and hold.		
▼ Rwy 31 helicopter visibility reduction below 1 SM NA. Straight-in and Circling Rwy 31 NA at night.				
ATIS 127.1	HARRISBURG APP CON 125.15 257.9	READING TOWER ★ 119.9 (CTAF) 0 288.3	GND CON 121.9	UNICOM 122.95



ELEV 343	TDZE 330
----------	----------



3200 OUTLT		Visual Segment - Obstacles.		
<div><div></div><div></div></div>				
<div><div>RW31</div><div>ADEKY 3.7 NM to RW31</div></div>		<div><div>PHLLZ</div><div>1720</div></div>	<div><div>MTPEN</div><div>2200</div></div>	
<div><div>3.7 NM</div><div>1.4 NM</div><div>6 NM</div></div>		<div><div>4 NM Holding Pattern</div><div>133° 313°</div><div>6000 3200</div></div>		
CATEGORY	A	B	C	D
LNNAV MDA	1620-1¼ 1290 (1300-1¼)	1620-1½ 1290 (1300-1½)	1620-3	1290 (1300-3)
CIRCLING	1620-1¼ 1277 (1300-1¼)	1620-1½ 1277 (1300-1½)	1620-3 1277 (1300-3)	1660-3 1317 (1400-3)

READING, PENNSYLVANIA

Orig-A 28DEC23

READING RGNL/CARL A SPAATZ FLD (RDG)

40°23'N-75°58'W

RNAV (GPS) RWY 31

READING, PENNSYLVANIA

AL-627 (FAA)

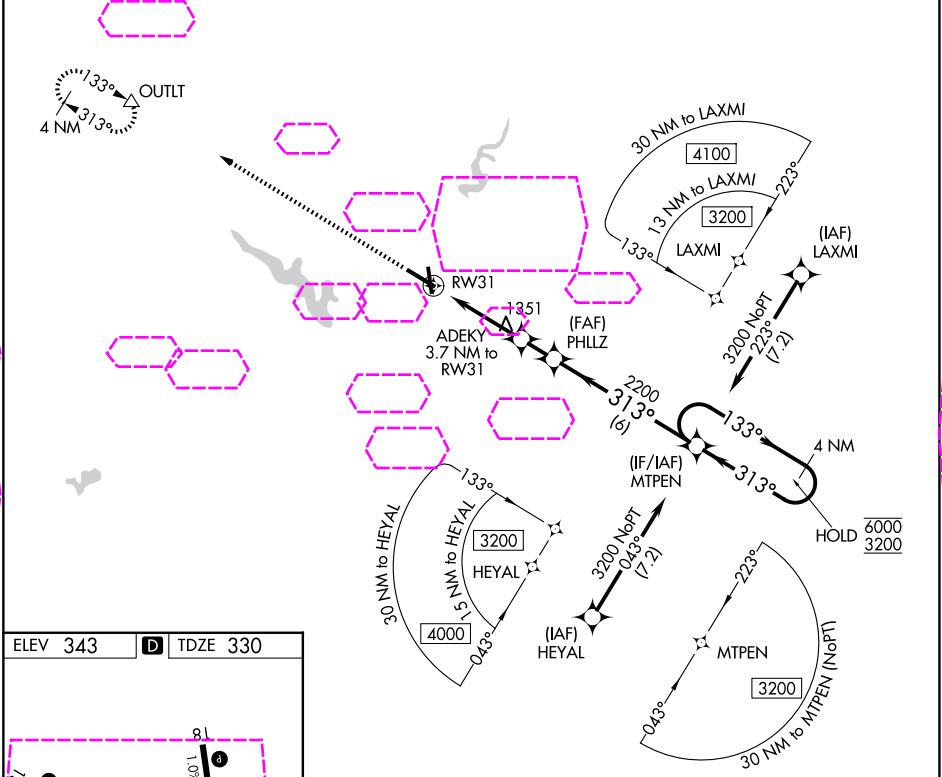
25219

APP CRS 313°	Rwy Ldg 6350
	TDZE 330
	Apt Elev 343

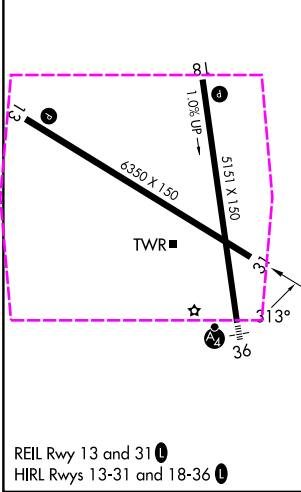
RNAV (GPS) RWY 31

READING RGNL/CARL A SPAATZ FLD (RDG)

RNP APCH - GPS.		MISSED APPROACH: Climb to 3200 direct OUTLT and hold.		
▼ Rwy 31 helicopter visibility reduction below 1 SM NA. Straight-in and Circling Rwy 31 NA at night.				
ATIS 127.1	HARRISBURG APP CON 125.15 257.9	READING TOWER ★ 119.9 (CTAF) 0 288.3	GND CON 121.9	UNICOM 122.95



ELEV 343	D	TDZE 330
----------	---	----------



3200	OUTLT	Visual Segment - Obstacles.			
		ADEKY 3.7 NM to RW31	PHLLZ	MTPEN	4 NM Holding Pattern
		RW31	1720	2200	133° 6000 313° 3200
		3.7 NM	1.4 NM	6 NM	
CATEGORY	A	B	C	D	
LNVA MDA	1620-1¼ 1290 (1300-1¼)	1620-1½ 1290 (1300-1½)	1620-3	1290 (1300-3)	
CIRCLING	1620-1¼ 1277 (1300-1¼)	1620-1½ 1277 (1300-1½)	1620-3 1277 (1300-3)	1660-3 1317 (1400-3)	

READING, PENNSYLVANIA

Orig-A 28DEC23

READING RGNL/CARL A SPAATZ FLD (RDG)

40°23'N-75°58'W

RNAV (GPS) RWY 31

NE-4, 07 AUG 2025 to 04 SEP 2025

NE-4, 07 AUG 2025 to 04 SEP 2025