

READING, PENNSYLVANIA

AL-627 (FAA)

25051

WAAS CH <b>45712</b> <b>W13A</b>	APP CRS <b>133°</b>	Rwy Idg <b>6350</b> TDZE <b>344</b> Apt Elev <b>344</b>
--	------------------------	---

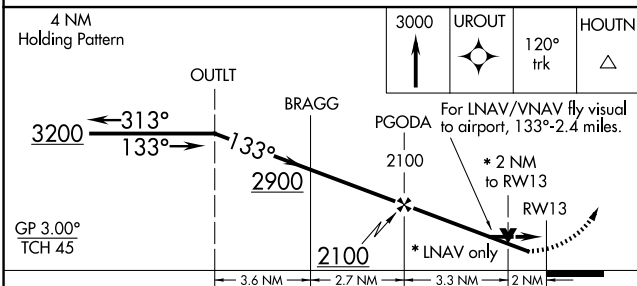
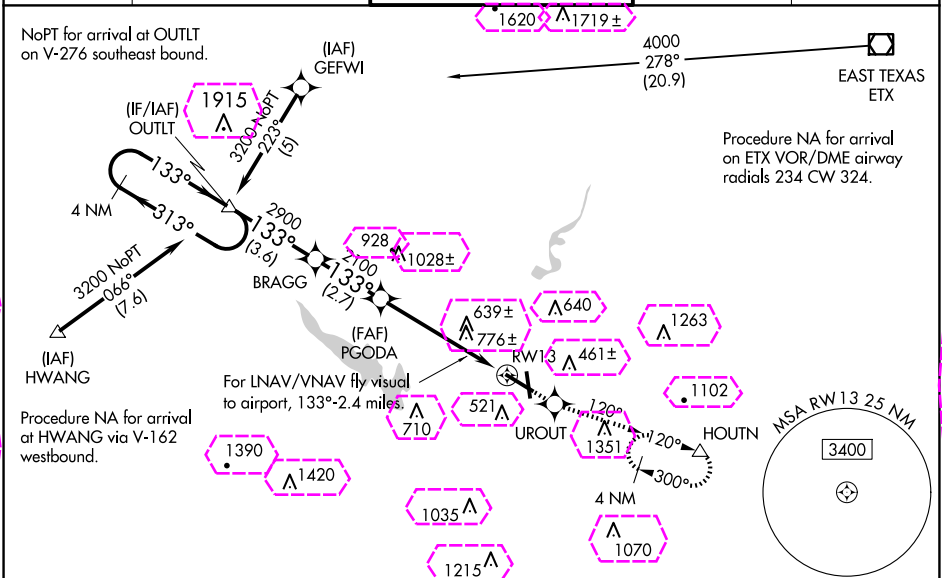
# RNAV (GPS) RWY 13

READING RGNL/CARL A SPAATZ FLD (RDG)

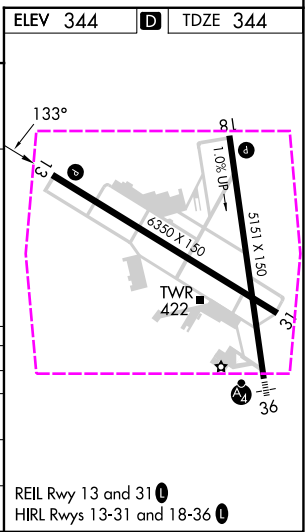
▼ Night landing: Rwy 18, 31 NA. For uncompensated Baro-VNAV systems, LNAV/VNAV NA below -15°C (5°F) or above 48°C (115°F). DME/DME RNP-0.3 NA. Helicopter visibility reduction below ¾ SM NA. VDP NA when using Harrisburg Intl altimeter setting. LNAV/VNAV NA when using Harrisburg altimeter setting. When local altimeter setting not received, use Harrisburg Intl altimeter setting and increase all DA 93 feet and visibility ½ SM all Cats and increase all MDAs 100 feet, increase LNAV Cat B/C/D and Circling Cat B/C visibility ¼ SM.

MISSED APPROACH: Climb to 3000 direct UROUT and via 120° track to HOUTN and hold, continue climb-in-hold to 3000.

ATIS <b>127.1</b>	HARRISBURG APP CON <b>125.15 257.9</b>	READING TOWER ★ <b>119.9 (CTAF) 0 288.3</b>	GND CON <b>121.9</b>	UNICOM <b>122.95</b>
----------------------	---	--	-------------------------	-------------------------



CATEGORY	A	B	C	D
LPV DA	926-2 582 (600-2)			
LNAV/VNAV DA	1170-2	826 (900-2)	1170-2½ 826 (900-2½)	1170-2¾ 826 (900-2¾)
LNAV MDA	1040-1	696 (700-1)	1040-2 696 (700-2)	1040-2¼ 696 (700-2¼)
CIRCLING	1040-1 696 (700-1)	1080-1 736 (800-1)	1280-2¾ 936 (1000-2¾)	1660-3 1316 (1400-3)



READING, PENNSYLVANIA

Orig-B 20MAY21

READING RGNL/CARL A SPAATZ FLD (RDG)

40°23'N - 75°58'W

# RNAV (GPS) RWY 13

READING, PENNSYLVANIA

AL-627 (FAA)

25219

WAAS CH <b>45712</b> <b>W13A</b>	APP CRS <b>133°</b>	Rwy Ldg <b>6350</b> TDZE <b>344</b> Apt Elev <b>344</b>
--	------------------------	---

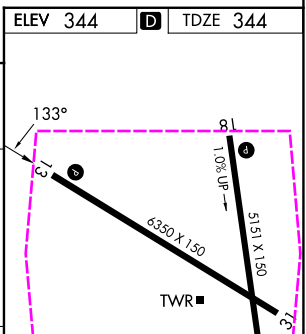
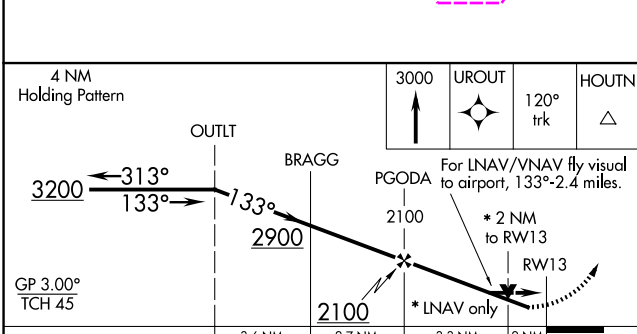
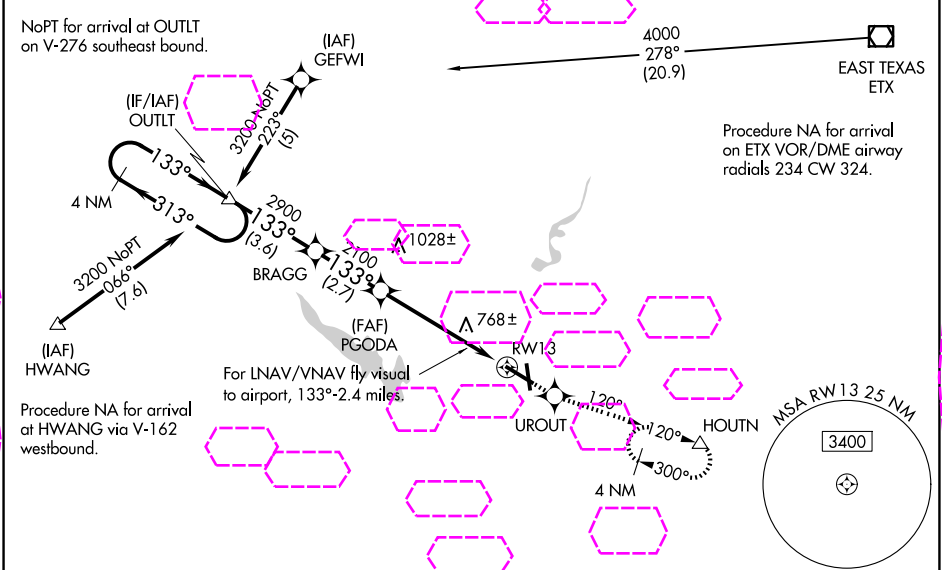
# RNAV (GPS) RWY 13

READING RGNL/CARL A SPAATZ FLD (RDG)

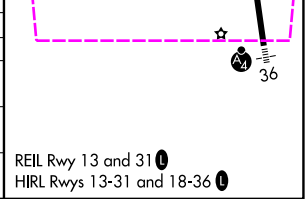
**▼** Night landing: Rwy 18, 31 NA. For uncompensated Baro-VNAV systems, LNAV/VNAV NA below -15°C (5°F) or above 48°C (115°F). DME/DME RNP-0.3 NA. Helicopter visibility reduction below ¾ SM NA. VDP NA when using Harrisburg Intl altimeter setting. LNAV/VNAV NA when using Harrisburg altimeter setting. When local altimeter setting not received, use Harrisburg Intl altimeter setting and increase all DA 93 feet and visibility ½ SM all Cats and increase all MDAs 100 feet, increase LNAV Cat B/C/D and Circling Cat B/C visibility ¼ SM.

**MISSED APPROACH:** Climb to 3000 direct UROUT and via 120° track to HOUTN and hold, continue climb-in-hold to 3000.

ATIS <b>127.1</b>	HARRISBURG APP CON <b>125.15 257.9</b>	READING TOWER ★ <b>119.9 (CTAF) 0 288.3</b>	GND CON <b>121.9</b>	UNICOM <b>122.95</b>
----------------------	---	--	-------------------------	-------------------------



CATEGORY	A	B	C	D
LPV DA	926-2 582 (600-2)			
LNAV/VNAV DA	1170-2	826 (900-2)	1170-2½ 826 (900-2½)	1170-2¾ 826 (900-2¾)
LNAV MDA	1040-1	696 (700-1)	1040-2 696 (700-2)	1040-2¼ 696 (700-2¼)
CIRCLING	1040-1 696 (700-1)	1080-1 736 (800-1)	1280-2¾ 936 (1000-2¾)	1660-3 1316 (1400-3)



READING, PENNSYLVANIA

Orig-B 20MAY21

READING RGNL/CARL A SPAATZ FLD (RDG)

40°23'N - 75°58'W

# RNAV (GPS) RWY 13

NE-4, 07 AUG 2025 to 04 SEP 2025

NE-4, 07 AUG 2025 to 04 SEP 2025