

LOC I-RDG	APP CRS	Rwy Idg	<b>5151</b>
<b>109.5</b>	<b>004°</b>	TDZE	<b>343</b>
		Apt Elev	<b>344</b>

## ILS or LOC RWY 36

READING RGNL/CARL A SPAATZ FLD (RDG)

**T** **A** Night Landing: Rwy 18, 31 NA. Inoperative table does not apply. When local altimeter setting not received, use Harrisburg Intl altimeter setting and increase S-ILS 36 DA to 686 feet and all Cats visibility  $\frac{1}{4}$  SM, and increase all MDAs 100 feet, and S-LOC 36 Cats C and D and Circling Cats B and C visibility  $\frac{1}{4}$  SM.

MALSF

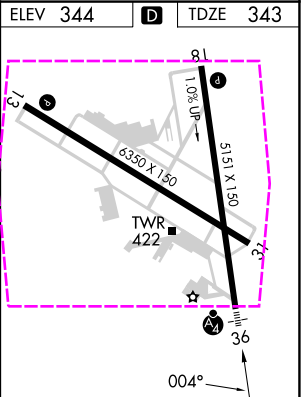
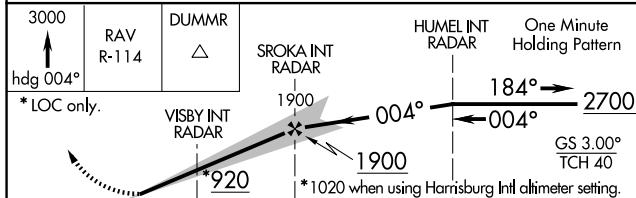
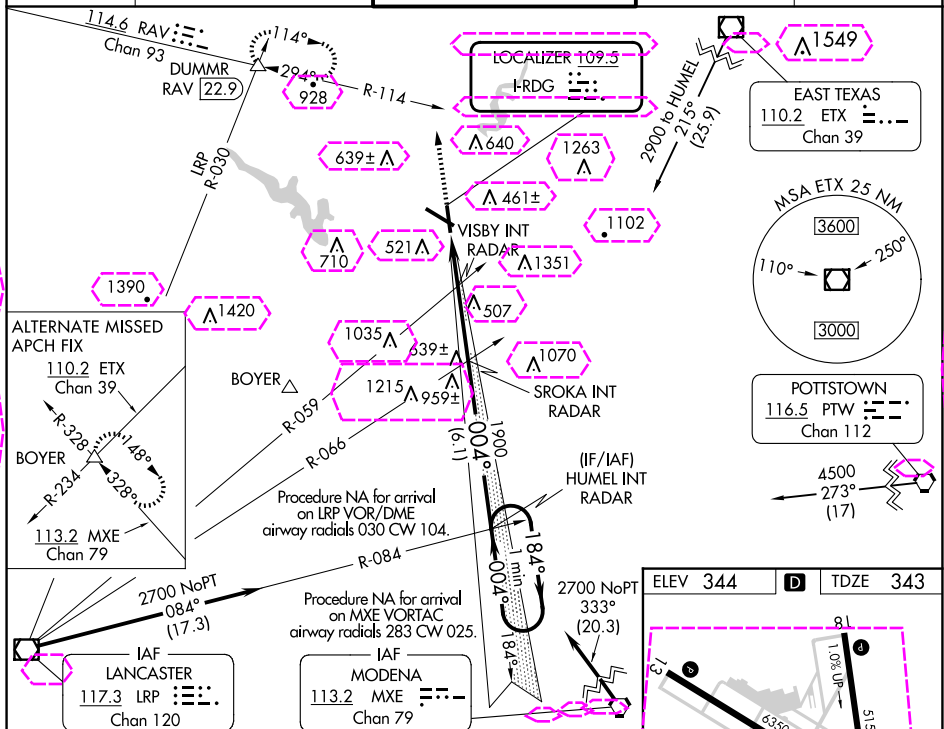
**MISSED APPROACH:** Climb to 3000 on heading 004° and RAV VORTAC R-114 to DUMMR INT/RAV 22.9 DME and hold, continue climb-in-hold to 3000.

ATIS  
127.1

HARRISBURG APP CON  
125.15 257.9

READING TOWER ★  
119.9 (CTAF) **L** 288.3

GND CON  
**121.9**

UNICOM  
122.95

	2 NM		2.7 NM		6.1 NM		
CATEGORY	A		B		C		D
S-ILS 36	593-1						250 (300-1)
S-LOC 36	820-1		477 (500-1)		820-1¼ 477 (500-1¼)		820-1½ 477 (500-1½)
CIRCLING	1020-1 676 (700-1)		1080-1 736 (800-1)		1280-2¾ 936 (1000-2¾)		1660-3 1316 (1400-3)

REIL Rwy 13 and 31 <b>L</b>					
HIRL Rwys 13-31 and 18-36 <b>L</b>					
FAF to MAP 4.7 NM					
Knots	60	90	120	150	180
Min:Sec	4:42	3:08	2:21	1:53	1:34

READING, PENNSYLVANIA

AL-627 (FAA)

25219

LOC I-RDG	APP CRS	Rwy Ldg
<b>109.5</b>	<b>004°</b>	<b>5151</b>
		TDZE <b>343</b>
		Apt Elev <b>344</b>

# ILS or LOC RWY 36

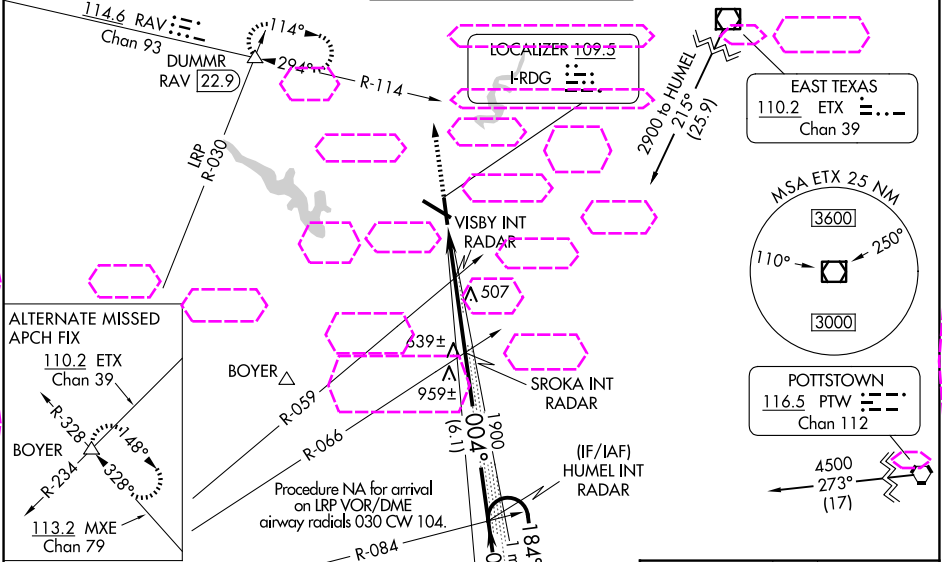
READING RGNL/CARL A SPAATZ FLD (RDG)

**⚠** Night Landing: Rwy 18, 31 NA. Inoperative table does not apply. When local altimeter setting not received, use Harrisburg Intl altimeter setting and increase S-ILS 36 DA to 686 feet and all Cats visibility ¼ SM, and increase all MDAs 100 feet, and S-LOC 36 Cats C and D and Circling Cats B and C visibility ¼ SM.

**MAISF**

**MISSED APPROACH:** Climb to 3000 on heading 004° and RAV VORTAC R-114 to DUMMR INT/RAV 22.9 DME and hold, continue climb-in-hold to 3000.

ATIS <b>127.1</b>	HARRISBURG APP CON <b>125.15 257.9</b>	READING TOWER ★ <b>119.9 (CTAF) 0 288.3</b>	GND CON <b>121.9</b>	UNICOM <b>122.95</b>
----------------------	---	--	-------------------------	-------------------------



**2700 NoPT**  
084°  
(17.3)

**IAF LANCASTER**  
117.3 LRP  
Chan 120

**Procedure NA for arrival on MXE VORTAC**  
airway radials 030 CW 104.

**Procedure NA for arrival on MXE VORTAC**  
airway radials 283 CW 025.

**IAF MODENA**  
113.2 MXE  
Chan 79

**ELEV 344**

**TDZE 343**

**3000**  
↑  
hdg 004°

**RAV R-114**

**DUMMR**  
△

**SROKA INT RADAR**

**HUMEL INT RADAR**

**One Minute Holding Pattern**

**\* LOC only.**

**VISBY INT RADAR**

**184°**

**004°**

**2700**

**GS 3.00°**

**TCH 40**

**\* 920**

**\* 1020 when using Harrisburg Intl altimeter setting.**

**2 NM**

**2.7 NM**

**6.1 NM**

CATEGORY	A	B	C	D
S-ILS 36		593-1	250 (300-1)	
S-LOC 36	820-1	477 (500-1)	820-1¼ 477 (500-1¼)	820-1½ 477 (500-1½)
CIRCLING	1020-1 676 (700-1)	1080-1 736 (800-1)	1280-2¾ 936 (1000-2¾)	1660-3 1316 (1400-3)

REIL Rwy 13 and 31

HIRL Rws 13-31 and 18-36

FAF to MAP 4.7 NM

Knots	60	90	120	150	180
Min:Sec	4:42	3:08	2:21	1:53	1:34

READING, PENNSYLVANIA

Amdt 30D 20MAY21

READING RGNL/CARL A SPAATZ FLD (RDG)

40°23'N-75°58'W

# ILS or LOC RWY 36