

LOC/DME I-VXO 110.55 Chan 42 (Y)	APP CRS 133°	Rwy Idg 6350 TDZE 344 Apt Elev 344
--	------------------------	---

ILS or LOC RWY 13
READING RGNL/CARLA SPAATZ FLD (RDG)

T Circling Rwy 18, 31 NA at night. Helicopter visibility reduction below $\frac{3}{4}$ SM NA. **A** VDP NA when using Harrisburg Infil altimeter setting. When local altimeter setting not received, use Harrisburg Infil altimeter setting and increase S-ILS 13 Cat A DA to 637 feet and visibility $\frac{1}{8}$ SM, Cat B DA to 652 feet and visibility $\frac{1}{8}$ SM, Cat C and D DA to 687 feet and visibility $\frac{1}{4}$ SM, and increase all MDA 100 feet and S-LOC 13 Cat C visibility $\frac{1}{4}$ SM. Circling Cats B and C visibility $\frac{1}{4}$ SM.

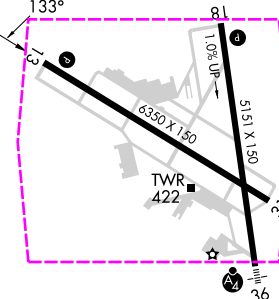
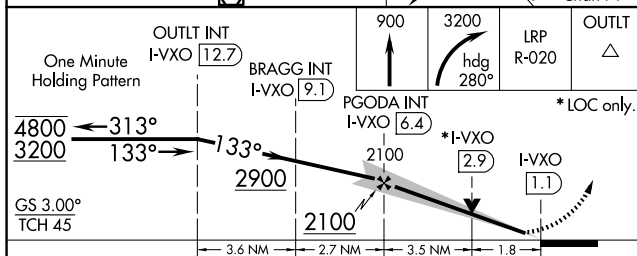
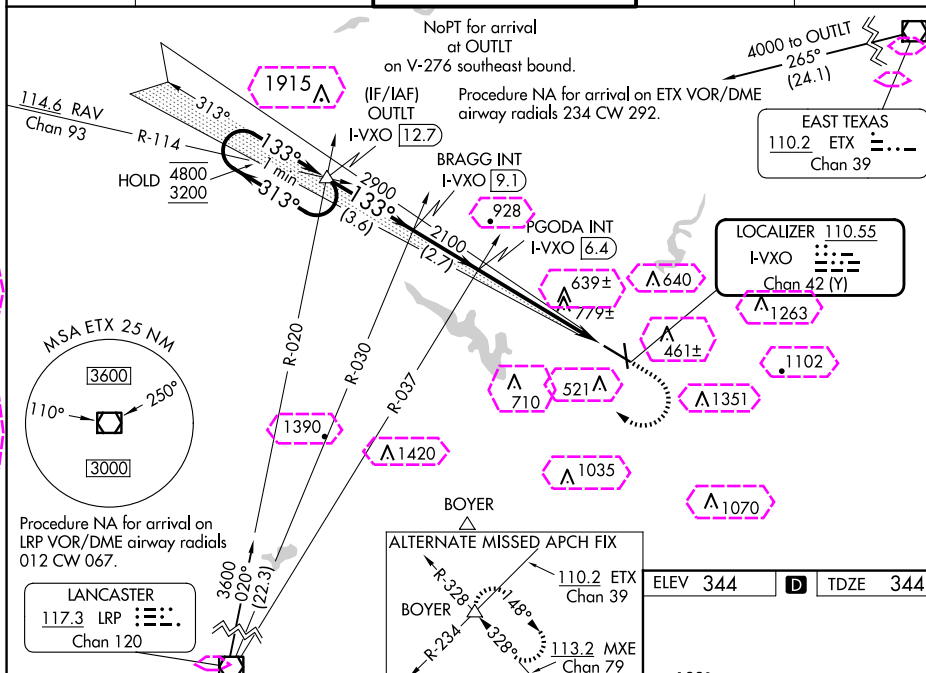
MISSED APPROACH: Climb to 900 then climbing right turn to 3200 on heading 280° and LRP VOR/DME R-020 to OUTLT INT/I-VXO 12.7 DME and hold.

ATIS
127.1

HARRISBURG APP CON
125.15 257.9

READING TOWER ★
119.9 (CTAF) 0 288.3

GND CON
121.9

UNICOM
122.95

CATEGORY	A	B	C	D
S-ILS 13	544- ³ / ₄ 200 (200- ³ / ₄)	559- ³ / ₄ 215 (300- ³ / ₄)	594- ³ / ₄	250 (300- ³ / ₄)
S-LOC 13	980-1	636 (700-1)	980-1 ³ / ₄ 636 (700-1 ³ / ₄)	980-2 636 (700-2)
CIRCLING	1020-1 676 (700-1)	1080-1 736 (800-1)	1280-2 ³ / ₄ 936 (1000-2 ³ / ₄)	1660-3 1316 (1400-3)

REIL Rwy 13 and 31 **L**
HIRL Rwy 13-31 and 18-36 **L**

FAF to MAP 5.3 NM

Knots	60	90	120	150	180
Min:Sec	5:18	3:32	2:39	2:07	1:41

READING, PENNSYLVANIA

AL-627 (FAA)

25219

LOC/DME I-VXO 110.55 Chan 42 (Y)	APP CRS 133°	Rwy Ldg TDZE 344 Apt Elev 344
--	------------------------	---

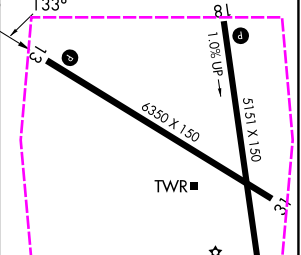
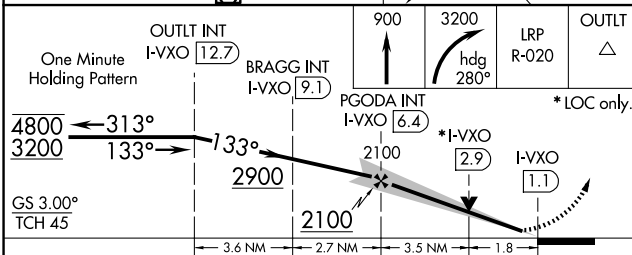
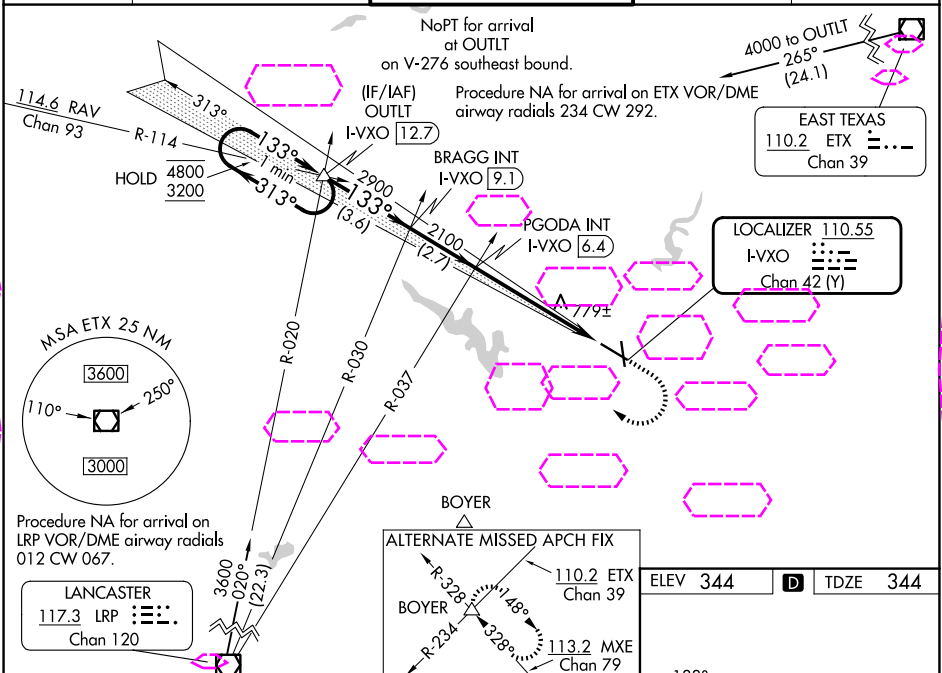
ILS or LOC RWY 13

READING RGNL/CARL A SPAATZ FLD (RDG)

⚠ Circling Rwy 18, 31 NA at night. Helicopter visibility reduction below $\frac{3}{4}$ SM NA. VDP NA when using Harrisburg Intl altimeter setting. When local altimeter setting not received, use Harrisburg Intl altimeter setting and increase S-ILS 13 Cat A DA to 637 feet and visibility $\frac{1}{8}$ SM, Cat B DA to 652 feet and visibility $\frac{1}{8}$ SM, Cat C and D DA to 687 feet and visibility $\frac{1}{4}$ SM, and increase all MDA 100 feet and S-LOC 13 Cat C visibility $\frac{1}{4}$ SM, Circling Cats B and C visibility $\frac{1}{4}$ SM.

MISSED APPROACH: Climb to 900 then climbing right turn to 3200 on heading 280° and LRP VOR/DME R-020 to OUTLT INT/I-VXO 12.7 DME and hold.

ATIS 127.1	HARRISBURG APP CON 125.15 257.9	READING TOWER ★ 119.9 (CTAF) 0 288.3	GND CON 121.9	UNICOM 122.95
----------------------	---	---	-------------------------	-------------------------



CATEGORY	A	B	C	D
S-ILS 13	544- $\frac{3}{4}$ 200 (200- $\frac{3}{4}$)	559- $\frac{3}{4}$ 215 (300- $\frac{3}{4}$)	594- $\frac{3}{4}$ 250 (300- $\frac{3}{4}$)	250 (300- $\frac{3}{4}$)
S-LOC 13	980-1 676 (700-1)	636 (700-1)	980-1 636 (700-1)	980-2 636 (700-2)
CIRCLING	1020-1 676 (700-1)	1080-1 736 (800-1)	1280-2 $\frac{3}{4}$ 936 (1000-2 $\frac{3}{4}$)	1660-3 1316 (1400-3)

REIL Rwy 13 and 31	0
HIRL Rwy 13-31 and 18-36	0
FAF to MAP	5.3 NM
Knots	60 90 120 150 180
Min:Sec	5:18 3:32 2:39 2:07 1:46

READING, PENNSYLVANIA

Amdt 1E 17JUN21

READING RGNL/CARL A SPAATZ FLD (RDG)

40°23'N-75°58'W

ILS or LOC RWY 13

NE-4, 07 AUG 2025 to 04 SEP 2025

NE-4, 07 AUG 2025 to 04 SEP 2025