

ST PETERSBURG-CLEARWATER, FLORIDA

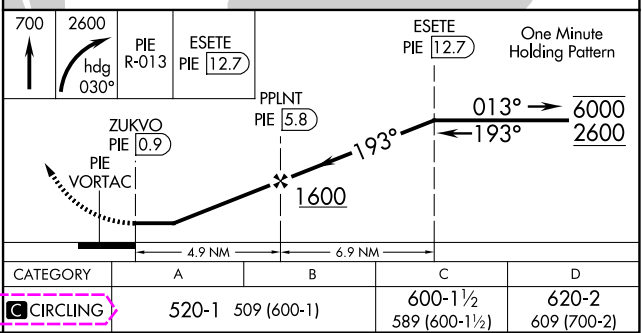
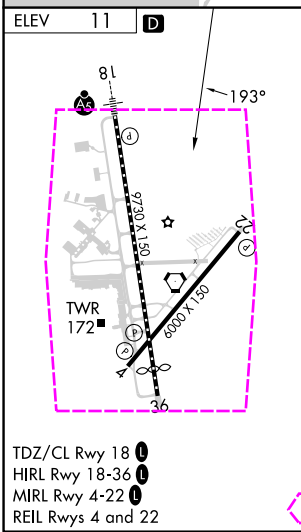
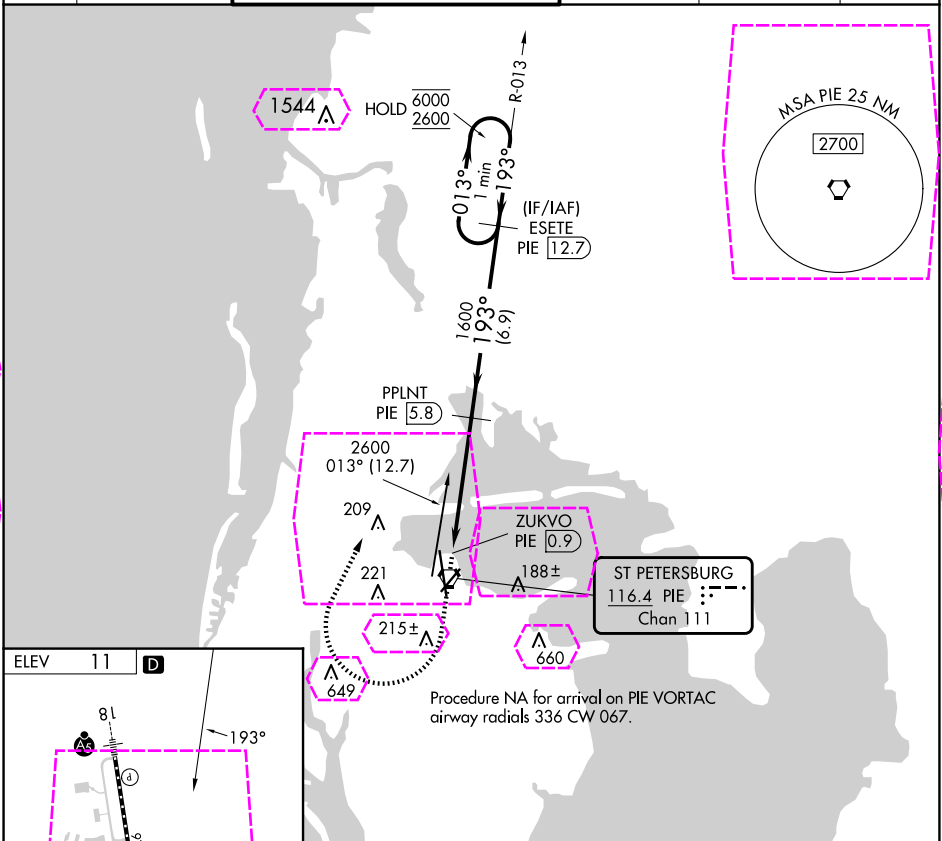
AL-625 (FAA)

24081

VORTAC PIE <b>116.4</b> Chan <b>111</b>	APP CRS <b>193°</b>	Rwy Idg TDZE Apt Elev	N/A N/A <b>11</b>
---	------------------------	-----------------------------	-------------------------

VOR-B  
ST PETE-CLEARWATER INTL (PIE)

DME required. T			MISSED APPROACH: Climb to 700 then climbing right turn to 2600 on heading 030° and PIE VORTAC R-013 to ESETE/PIE 12.7 DME and hold.			
ATIS 134.5	TAMPA APP CON 125.3 316.05	ST PETERSBURG-CLEARWATER TOWER ★ 118.3 (CTAF) 0 257.8		GND CON 121.9 348.6	CLNC DEL 120.6 350.2	UNICOM 122.95



ST PETERSBURG-CLEARWATER, FLORIDA  
Orig 28FEB19

27°55'N-82°41'W

ST PETE-CLEARWATER INTL (PIE)  
VOR-B

SE-3, 10 JUL 2025 to 07 AUG 2025

SE-3, 10 JUL 2025 to 07 AUG 2025

ST PETERSBURG-CLEARWATER, FLORIDA

AL-625 (FAA)

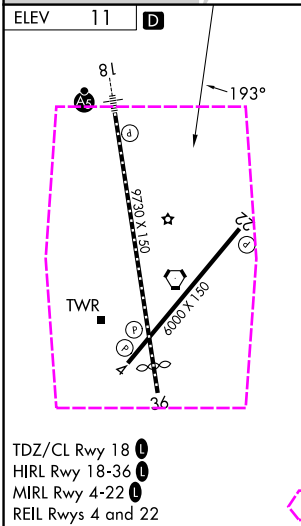
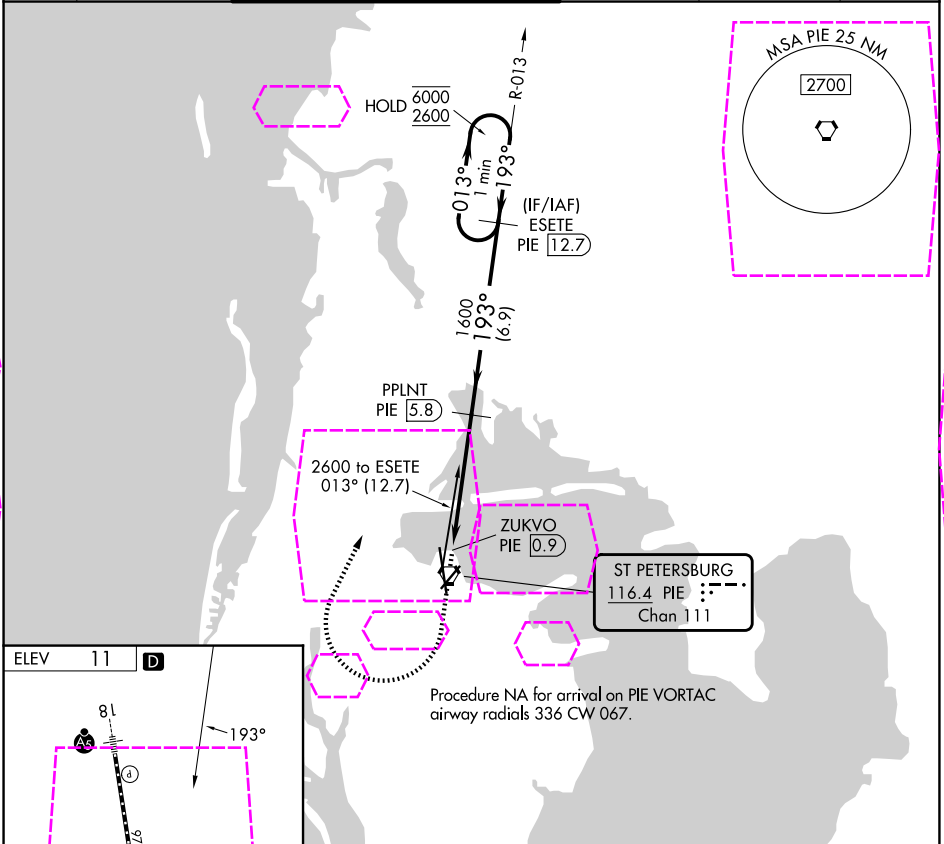
25219

VORTAC PIE <b>116.4</b> Chan <b>111</b>	APP CRS <b>193°</b>	Rwy Ldg TDZE Apt Elev <b>N/A</b> <b>N/A</b> <b>11</b>
---	------------------------	--

VOR-B

ST PETE-CLEARWATER INTL (PIE)

DME required.		MISSED APPROACH: Climb to 700 then climbing right turn to 2600 on heading 030° and PIE VORTAC R-013 to ESETE/PIE 12.7 DME and hold.			
ATIS <b>134.5</b>	TAMPA APP CON <b>125.3 316.05</b>	ST PETERSBURG-CLEARWATER TOWER ★ <b>118.3 (CTAF) 0 257.8</b>	GND CON <b>121.9 348.6</b>	CLNC DEL <b>120.6 350.2</b>	UNICOM <b>122.95</b>



ST PETERSBURG-CLEARWATER, FLORIDA  
Orig 28FEB19

27°55'N-82°41'W

ST PETE-CLEARWATER INTL (PIE)  
VOR-B