

ST PETERSBURG-CLEARWATER, FLORIDA

AL-625 (FAA)

24081

VORTAC PIE	APP CRS	Rwy Idg	6000
116.4	039°	TDZE	11
Chan 111		Apt Elev	11

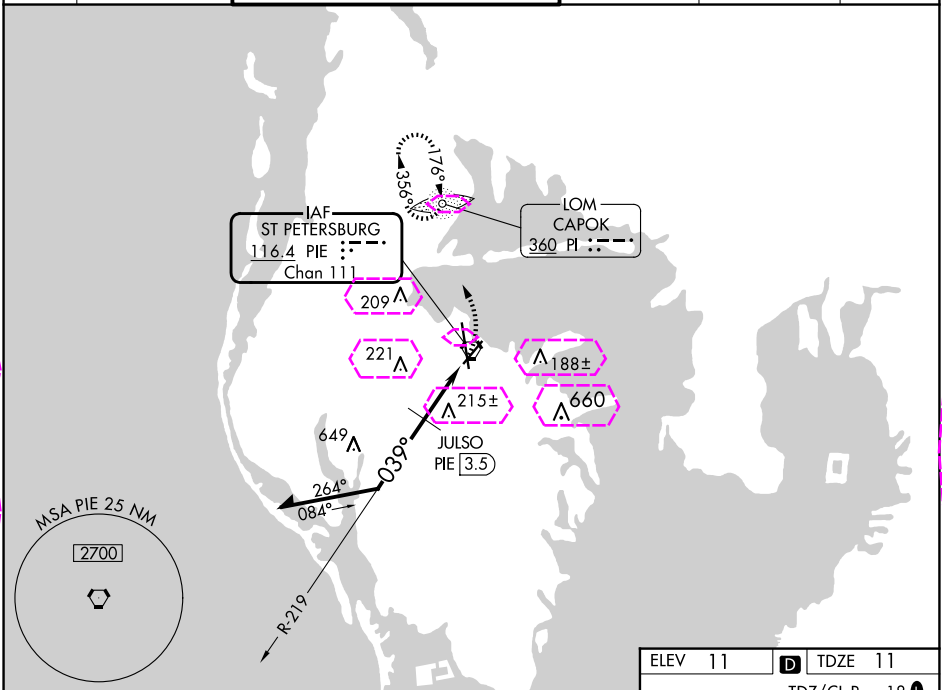
VOR RWY 4
ST PETE-CLEARWATER INTL (PIE)

ADF required.

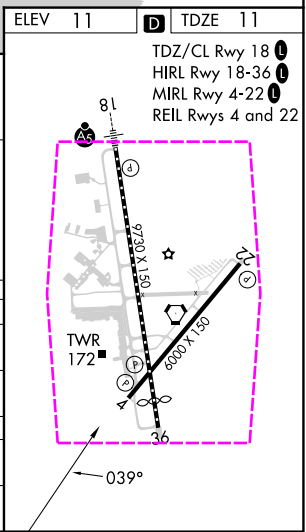
When local altimeter setting not received, use Tampa Intl altimeter setting and increase all MDAs 40 feet; JULSO fix minimums: increase Circling Cat C/D visibility ¼ SM. Helicopter visibility reduction below ¾ SM NA.

MISSED APPROACH:
Climbing left turn to 1700
direct CAPOK LOM and hold.

ATIS	TAMPA APP CON	ST PETERSBURG-CLEARWATER TOWER ★	GND CON	CLNC DEL	UNICOM
134.5	125.3 316.05	118.3 (CTAF) 0 257.8	121.9 348.6	120.6 350.2	122.95



Remain within 10 NM				
PIE VORTAC				
JULSO PIE 3.5				
1700				
219°				
039°				
1000				
3.5 NM				
CATEGORY	A	B	C	D
S-4	1000-1¼ 989 (1000-1¼)	1000-1½ 989 (1000-1½)	1000-3	989 (1000-3)
CIRCLING	1000-1¼ 989 (1000-1¼)	1000-1½ 989 (1000-1½)	1000-3	989 (1000-3)
JULSO FIX MINIMUMS				
S-4	480-1	469 (500-1)	480-1¾	469 (500-1¾)
CIRCLING	520-1	509 (600-1)	600-1½ 589 (600-1½)	620-2 609 (700-2)



ST PETERSBURG-CLEARWATER, FLORIDA
Amdt 1C 08SEP22

27°55'N-82°41'W

ST PETE-CLEARWATER INTL (PIE)
VOR RWY 4

ST PETERSBURG-CLEARWATER, FLORIDA

AL-625 (FAA)

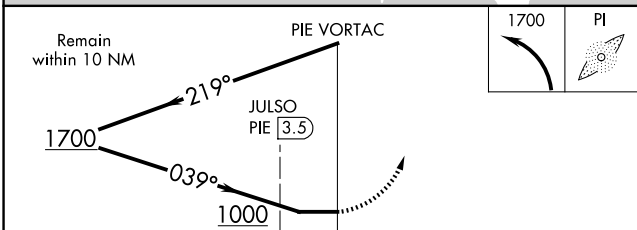
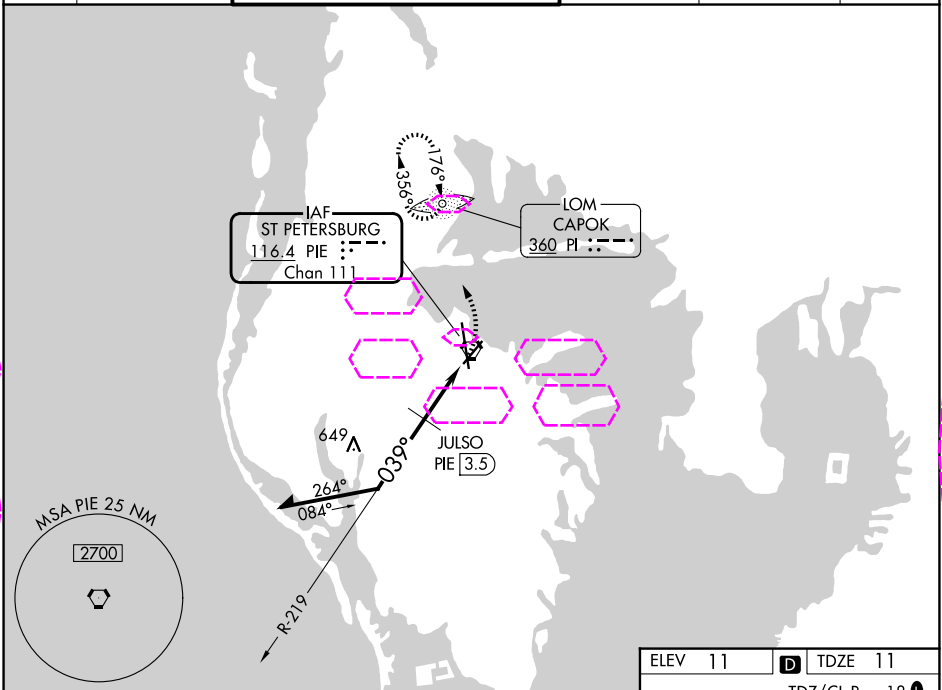
25219

VORTAC PIE	APP CRS	Rwy Ldg	6000
116.4	039°	TDZE	11
Chan 111		Apt Elev	11

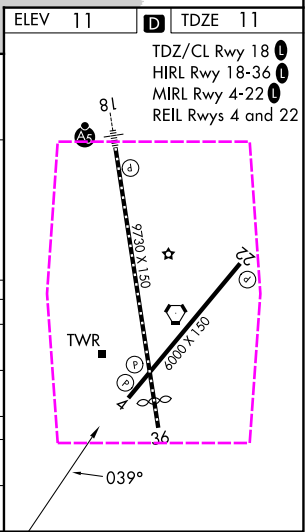
VOR RWY 4
ST PETE-CLEARWATER INTL (PIE)

ADF required.		MISSED APPROACH: Climbing left turn to 1700 direct CAPOK LOM and hold.	
When local altimeter setting not received, use Tampa Intl altimeter setting and increase all MDAs 40 feet; JULSO fix minimums: increase Circling Cat C/D visibility ¼ SM. Helicopter visibility reduction below ¾ SM NA.			

ATIS	TAMPA APP CON	ST PETERSBURG-CLEARWATER TOWER ★	GND CON	CLNC DEL	UNICOM
134.5	125.3 316.05	118.3 (CTAF) 0 257.8	121.9 348.6	120.6 350.2	122.95



CATEGORY	A	B	C	D
S-4	1000-1¼ 989 (1000-1¼)	1000-1½ 989 (1000-1½)	1000-3	989 (1000-3)
CIRCLING	1000-1¼ 989 (1000-1¼)	1000-1½ 989 (1000-1½)	1000-3	989 (1000-3)
JULSO FIX MINIMUMS				
S-4	480-1	469 (500-1)	480-1¾	469 (500-1¾)
CIRCLING	520-1	509 (600-1)	600-1½ 589 (600-1½)	620-2 609 (700-2)



ST PETERSBURG-CLEARWATER, FLORIDA
Amdt 1C 08SEP22

27°55'N-82°41'W

ST PETE-CLEARWATER INTL (PIE)
VOR RWY 4