


ST PETERSBURG-CLEARWATER, FLORIDA

AL-625 (FAA)

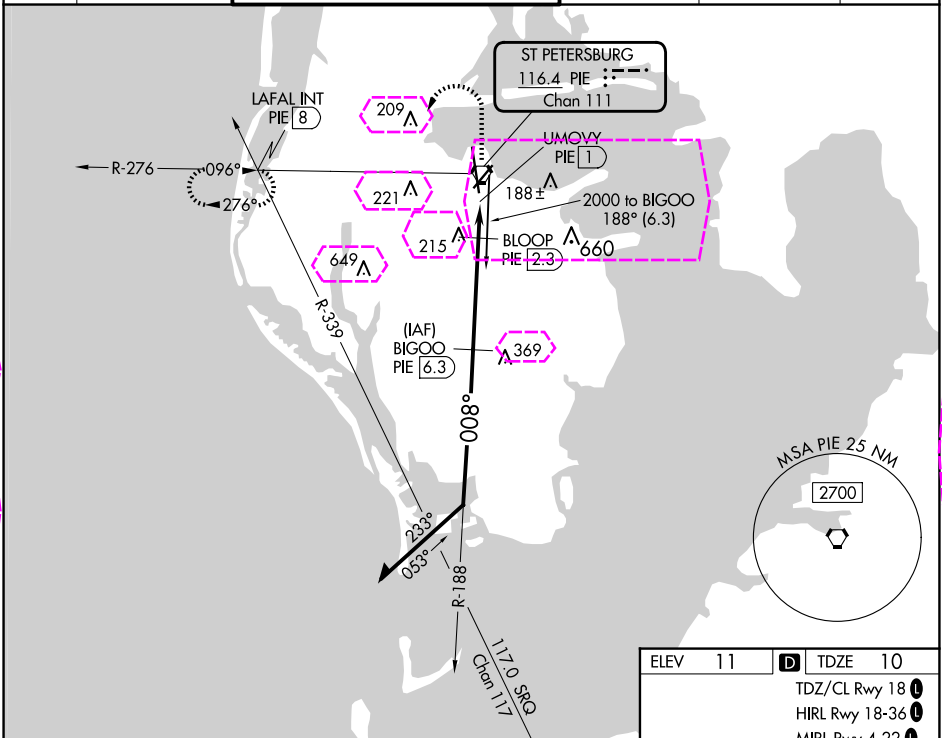
25163

VORTAC PIE	APP CRS	Rwy Ldg	8720
116.4	008°	TDZE	10
Chan 111		Apt Elev	11

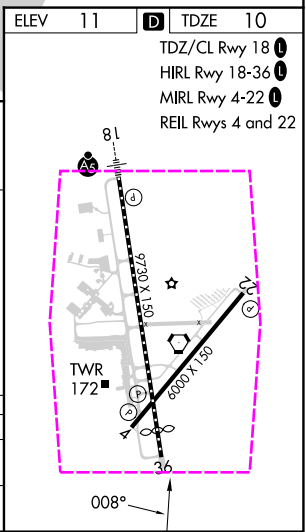
VOR RWY 36
ST PETE-CLEARWATER INTL (PIE)

DME required.	MISSED APPROACH: Climb to 1200 then climbing left turn to 1700 on heading 240° and PIE VORTAC R-276 to LAFAL INT/PIE 8 DME and hold.
 Circling Rwy 22 NA at night. Rwy 36 helicopter visibility reduction below RVR 5000 NA.	

ATIS	TAMPA APP CON	ST PETERSBURG-CLEARWATER TOWER	GND CON	CLNC DEL	UNICOM
134.5	125.3 316.05	118.3 (CTAF) 257.8	121.9 348.6	120.6 350.2	122.95



VGSI and descent angles not coincident (VGSI Angle 3.00/TCH 76).				1200	1700	PIE R-276	LAFAL INT
Remain within 10 NM				↑	hdg 240°		
2000 → 188° → BIGOO (PIE 6.3)							
2000 → 008° → 2000							
3.13° TCH 60							
620 → BLOOP (PIE 2.3)							
4 NM							
1.3 NM							
0.5							
CATEGORY	A	B	C	D			
S-36	520-55	510 (600-1)	520-1 3/8	510 (600-1 1/8)			
CIRCLING	620-1	609 (700-1)	640-1 3/4 629 (700-1 3/4)	680-2 669 (700-2)			



ST PETERSBURG-CLEARWATER, FLORIDA
Orig-A 12JUN25

27°55'N-82°41'W

ST PETE-CLEARWATER INTL (PIE)
VOR RWY 36

SE-3, 10 JUL 2025 to 07 AUG 2025

SE-3, 10 JUL 2025 to 07 AUG 2025

ST PETERSBURG-CLEARWATER, FLORIDA



AL-625 (FAA)

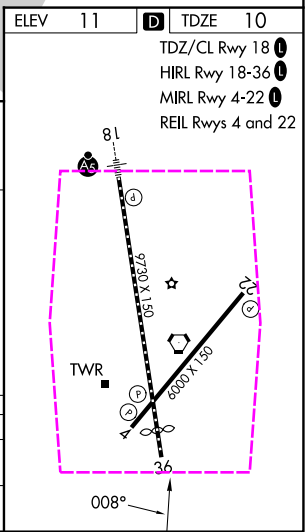
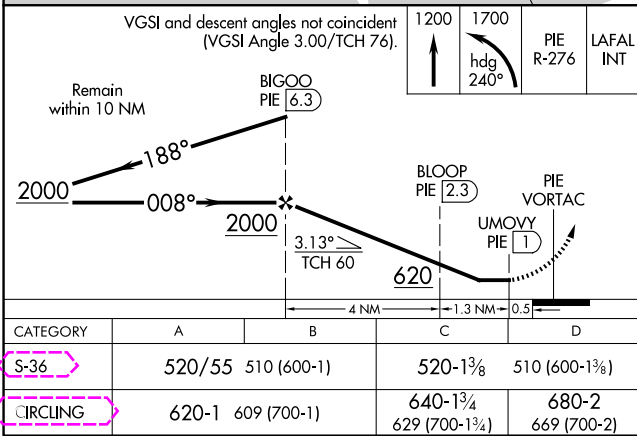
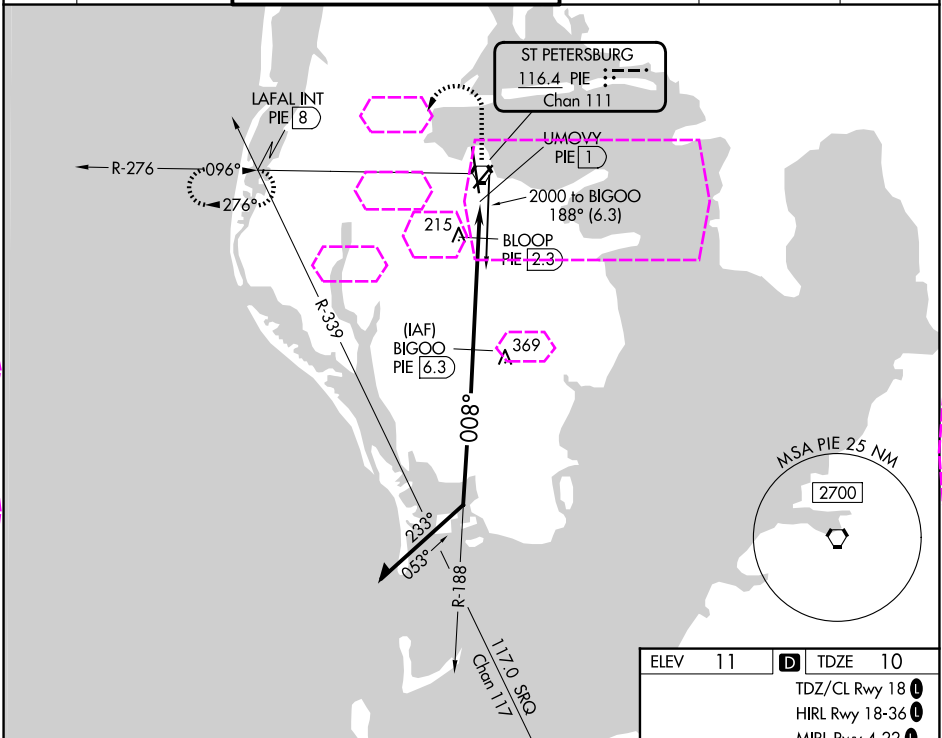
25219

VORTAC PIE	APP CRS	Rwy Ldg	8720
116.4	008°	TDZE	10
Chan 111		Apt Elev	11

VOR RWY 36

ST PETE-CLEARWATER INTL (PIE)

DME required.		MISSED APPROACH: Climb to 1200 then climbing left turn to 1700 on heading 240° and PIE VORTAC R-276 to LAFAL INT/PIE 8 DME and hold.			
	◀ Circling Rwy 22 NA at night. Rwy 36 helicopter visibility reduction below RVR 5000 NA.				
					
ATIS 134.5	TAMPA APP CON 125.3 316.05	ST PETERSBURG-CLEARWATER TOWER ★ 118.3 (CTAF) 0 257.8	GND CON 121.9 348.6	CLNC DEL 120.6 350.2	UNICOM 122.95



ST PETERSBURG-CLEARWATER, FLORIDA
Orig-A 12JUN25

27°55'N-82°41'W

ST PETE-CLEARWATER INTL (PIE)
VOR RWY 36

SE-3, 07 AUG 2025 to 04 SEP 2025

SE-3, 07 AUG 2025 to 04 SEP 2025