

ST PETERSBURG-CLEARWATER, FLORIDA

AL-625 (FAA)

24137

WAAS CH 65739 W36A	APP CRS 356°	Rwy Idg 8720 TDZE 10 Apt Elev 11
--	------------------------	---

RNAV (GPS) RWY 36

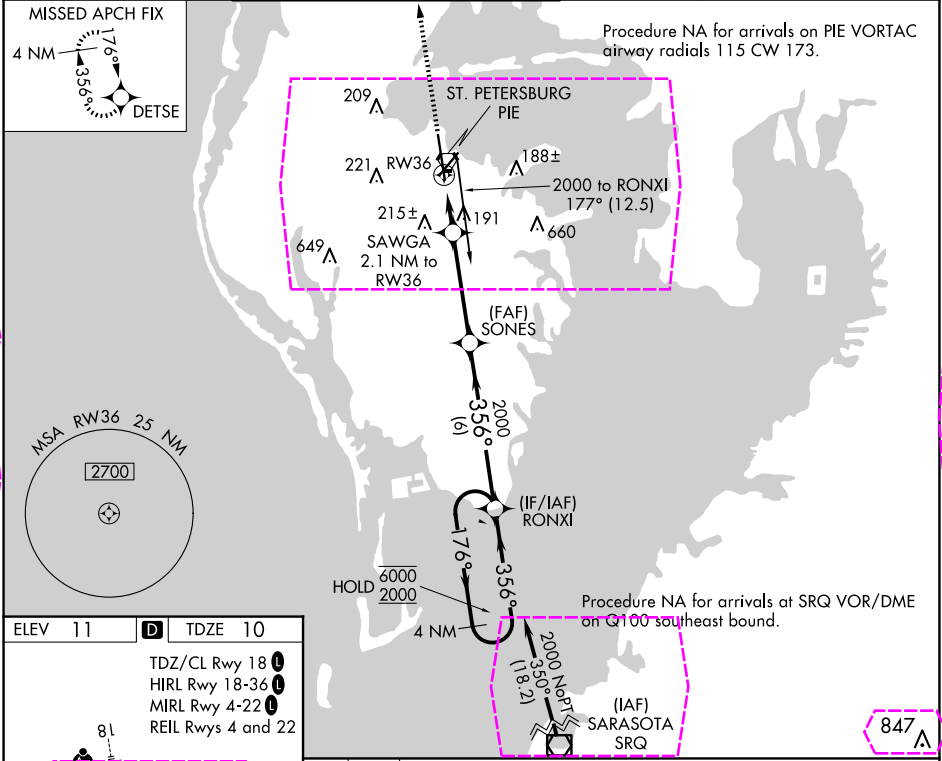
ST PETE-CLEARWATER INTL (PIE)

RNP APCH - GPS

Circling to Rwy 22 NA at night. For uncompensated Baro-VNAV systems, LNAV/VNAV NA below 3°C or above 54°C.

MISSED APPROACH: Climb to 2600 direct DETSE and hold.

ATIS 134.5	TAMPA APP CON 125.3 316.05	ST PETERSBURG-CLEARWATER TOWER ★ 118.3 (CTAF) 0 257.8	GND CON 121.9 348.6	CLNC DEL 120.6 350.2	UNICOM 122.95
----------------------	--------------------------------------	---	-------------------------------	--------------------------------	-------------------------



2600 DETSE

VGSI and RNAV glidepath not coincident (VGSI Angle 3.00/TCH 76).

SAWGA 2.1 NM to RW36

1.2 NM to RW36

720

2000

356°

176°

6000

2000

GP 3.00° TCH 55

1.2 NM 0.9 4 NM 6 NM

CATEGORY A B C D

LPV DA 210/40 200 (200-¾)

LNAV/VNAV DA 315/45 305 (400-¾)

LNAV MDA 460/55 450 (500-1) 460-1½ 450 (500-1½)

CIRCLING

 520-1 509 (600-1) 600-1½ 589 (600-1½) 620-2 609 (700-2)

ST PETERSBURG-CLEARWATER, FLORIDA
Amdt 1A 16MAY24

27°55'N-82°41'W

ST PETE-CLEARWATER INTL (PIE)
RNAV (GPS) RWY 36

ST PETERSBURG-CLEARWATER, FLORIDA

AL-625 (FAA)

25219

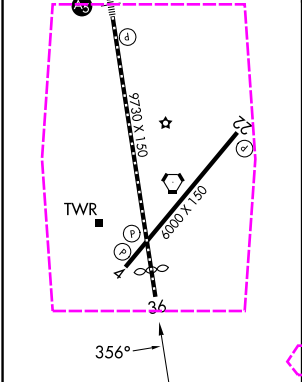
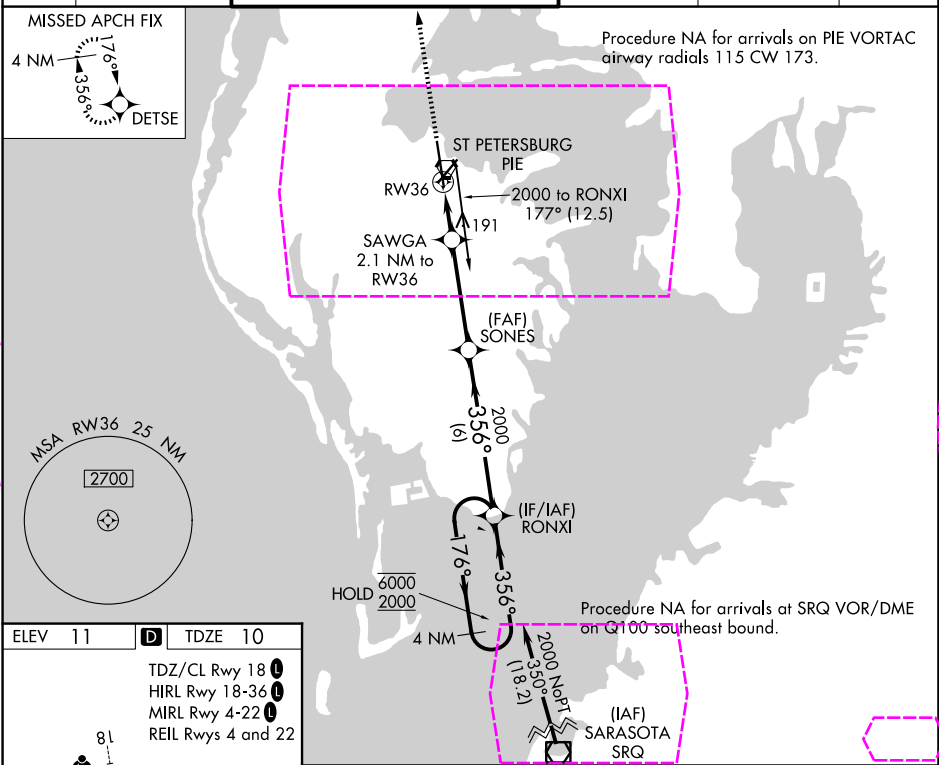
WAAS CH 65739 W36A	APP CRS 356°	Rwy Ldg 8720 TDZE 10 Apt Elev 11
--	------------------------	---

RNAV (GPS) RWY 36
ST PETE-CLEARWATER INTL (PIE)

RNP APCH - GPS

	Circling to Rwy 22 NA at night. For uncompensated Baro-VNAV systems, LNAV/VNAV NA below 3°C or above 54°C.	MISSED APPROACH: Climb to 2600 direct DETSE and hold.
--	--	---

ATIS 134.5	TAMPA APP CON 125.3 316.05	ST PETERSBURG-CLEARWATER TOWER ★ 118.3 (CTAF) 0 257.8	GND CON 121.9 348.6	CLNC DEL 120.6 350.2	UNICOM 122.95
----------------------	--------------------------------------	---	-------------------------------	--------------------------------	-------------------------



2600

DETSE

↑

✦

SAWGA

2.1 NM to RW36

SONES

2000

RONXI

4 NM Holding Pattern

1.2 NM to RW36

720

356°

176°

356°

2000

GP 3.00° TCH 55

1.2 NM

0.9

4 NM

6 NM

CATEGORY	A	B	C	D
LPV DA	210/40		200 (200-¾)	
LNAV/VNAV DA	315/45		305 (400-¾)	
LNAV MDA	460/55	450 (500-1)	460-1⅜	450 (500-1⅜)
CIRCLING	520-1	509 (600-1)	600-1½ 589 (600-½)	620-2 609 (700-2)

ST PETERSBURG-CLEARWATER, FLORIDA
Amdt 1A 16MAY24

27°55'N-82°41'W

ST PETE-CLEARWATER INTL (PIE)
RNAV (GPS) RWY 36

SE-3, 07 AUG 2025 to 04 SEP 2025

SE-3, 07 AUG 2025 to 04 SEP 2025