

ST PETERSBURG-CLEARWATER, FLORIDA

AL-625 (FAA)

24081

WAAS CH 61039 W18A	APP CRS 176°	Rwy Idg 9180 TDZE 7 Apt Elev 11
--	------------------------	--

RNAV (GPS) RWY 18

ST PETE-CLEARWATER INTL (PIE)

RNP APCH - GPS.

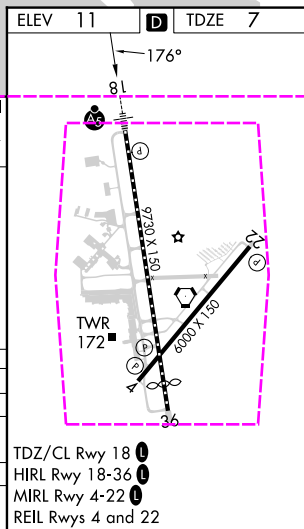
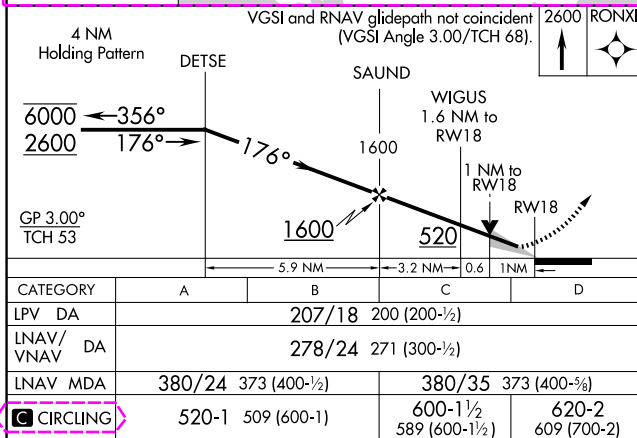
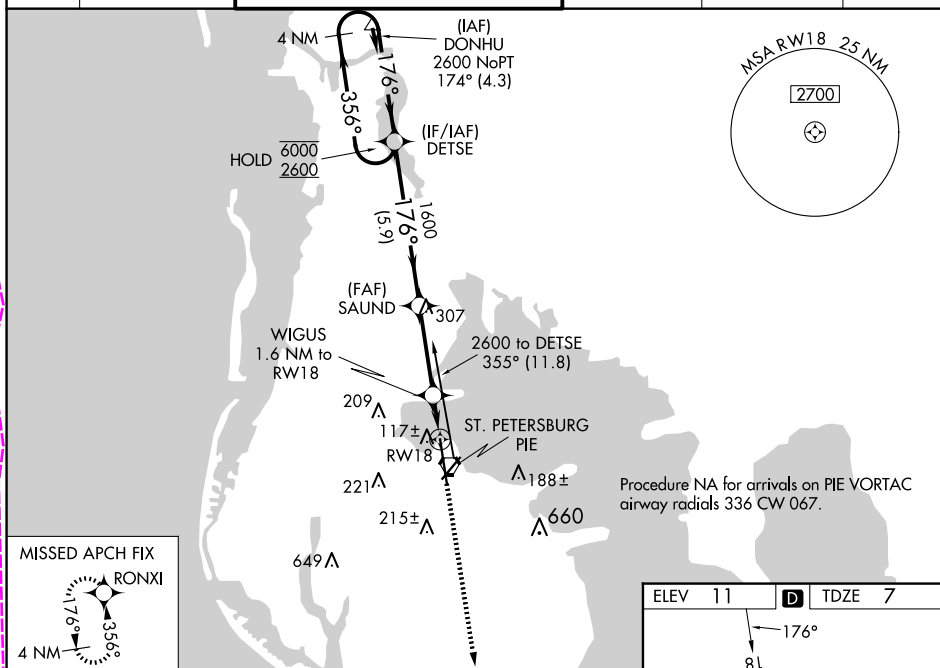
⚠ Circling to Rwy 22 NA at night. For uncompensated Baro-VNAV systems, LNAV/VNAV NA below 3°C or above 54°C. For inop ALS, increase LNAV/VNAV all Cats visibility to RVR 4500 and LNAV Cats C and D visibility to RVR 5500.

MALSR



MISSED APPROACH: Climb to 2600 direct RONXI and hold.

ATIS 134.5	TAMPA APP CON 125.3 316.05	ST PETERSBURG-CLEARWATER TOWER ★ 118.3 (CTAF) 0 257.8	GND CON 121.9 348.6	CLNC DEL 120.6 350.2	UNICOM 122.95
----------------------	--------------------------------------	---	-------------------------------	--------------------------------	-------------------------



ST PETERSBURG-CLEARWATER, FLORIDA
Amdt 1 14JUL22

27°55'N-82°41'W

ST PETE-CLEARWATER INTL (PIE)
RNAV (GPS) RWY 18

ST PETERSBURG-CLEARWATER, FLORIDA

AL-625 (FAA)

25219

WAAS CH 61039 W18A	APP CRS 176°	Rwy Ldg TDZE Apt Elev	9180 7 11
--	------------------------	-----------------------------	--------------------------------------

RNAV (GPS) RWY 18

ST PETE-CLEARWATER INTL (PIE)

RNP APCH - GPS.

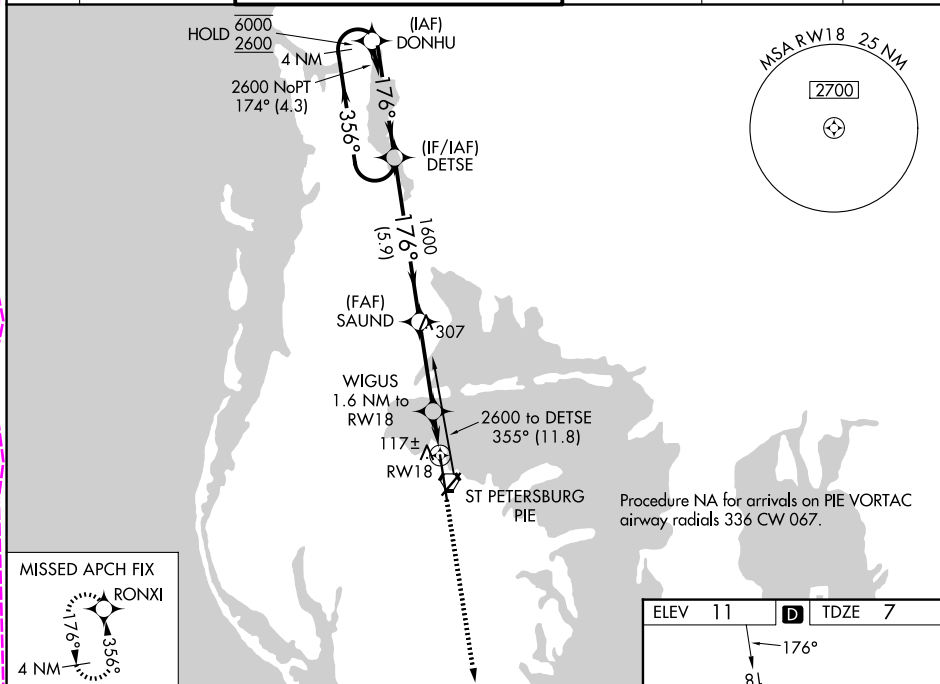
⚠ Circling to Rwy 22 NA at night. For uncompensated Baro-VNAV systems, LNAV/VNAV NA below 3°C or above 54°C. For inop ALS, increase LNAV/VNAV all Cats visibility to RVR 4500 and LNAV Cats C and D visibility to RVR 5500.

MALSR

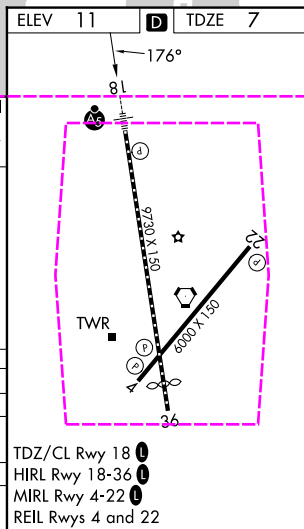


MISSED APPROACH: Climb to 2600 direct RONXI and hold.

ATIS 134.5	TAMPA APP CON 125.3 316.05	ST PETERSBURG-CLEARWATER TOWER ★ 118.3 (CTAF) 0 257.8	GND CON 121.9 348.6	CLNC DEL 120.6 350.2	UNICOM 122.95
----------------------	--------------------------------------	---	-------------------------------	--------------------------------	-------------------------



4 NM Holding Pattern		VGSI and RNAV glidepath not coincident (VGSI Angle 3.00/TCH 68).		2600 RONXI	
DETSE		SAUND		WIGUS	
6000 ← 356°		1600		1.6 NM to RW18	
2600 → 176°		520		1 NM to RW18	
GP 3.00° TCH 53		5.9 NM		RW18	
		3.2 NM		0.6	
CATEGORY		A		D	
LPV DA		207/18		200 (200-½)	
LNAV/VNAV DA		278/24		271 (300-½)	
LNAV MDA		380/24		373 (400-½)	
CIRCLING		520-1		509 (600-1)	
		600-1½		589 (600-1½)	
		620-2		609 (700-2)	



ST PETERSBURG-CLEARWATER, FLORIDA
Amdt 1 14JUL22

27°55'N-82°41'W

ST PETE-CLEARWATER INTL (PIE)
RNAV (GPS) RWY 18

SE-3, 07 AUG 2025 to 04 SEP 2025

SE-3, 07 AUG 2025 to 04 SEP 2025