

(LLRGO1.LLRGO) 24137

AL-625 (FAA)

ST PETE-CLEARWATER INTL (PIE)
ST PETERSBURG-CLEARWATER, FLORIDA

LLRGO ONE DEPARTURE (RNAV)

TAMPA DEP CON

125.3 316.05

ATIS

134.5

CLNC DEL

120.6 350.2

GND CON

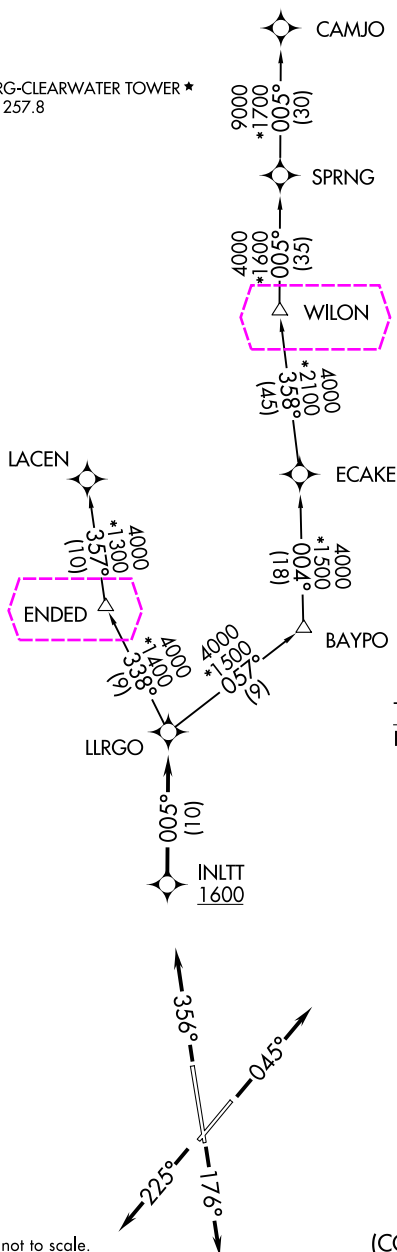
121.9 348.6

ST. PETERSBURG-CLEARWATER TOWER ★

118.3 (CTAF) 257.8

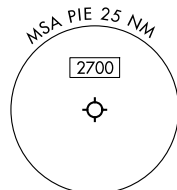
RNAV 1 - DME/DME/IRU or GPS.

RADAR required.

TOP ALTITUDE:
1600NOTE: For jets less than 60,000 lbs
or as assigned by ATC.

TAKEOFF MINIMUMS

Rwys 4, 18, 36: Standard.

Rwy 22: 300-1½ or standard with
minimum climb of 230'/NM
to 300, or alternatively, with
standard takeoff minimums
and a normal 200'/NM climb
gradient, takeoff must occur no
later than 1700' prior to DER.

NOTE: Chart not to scale.

(CONTINUED ON FOLLOWING PAGE)

LLRGO ONE DEPARTURE (RNAV)

(LLRGO1.LLRGO) 16MAY24

ST PETERSBURG-CLEARWATER, FLORIDA
ST PETE-CLEARWATER INTL (PIE)

SE-3, 10 JUL 2025 to 07 AUG 2025

SE-3, 10 JUL 2025 to 07 AUG 2025

(LLRGO1.LLRGO) 25219

AL-625 (FAA)

ST PETE-CLEARWATER INTL (PIE)
ST PETERSBURG-CLEARWATER, FLORIDA

LLRGO ONE DEPARTURE (RNAV)

TAMPA DEP CON

125.3 316.05

ATIS

134.5

CLNC DEL

120.6 350.2

GND CON

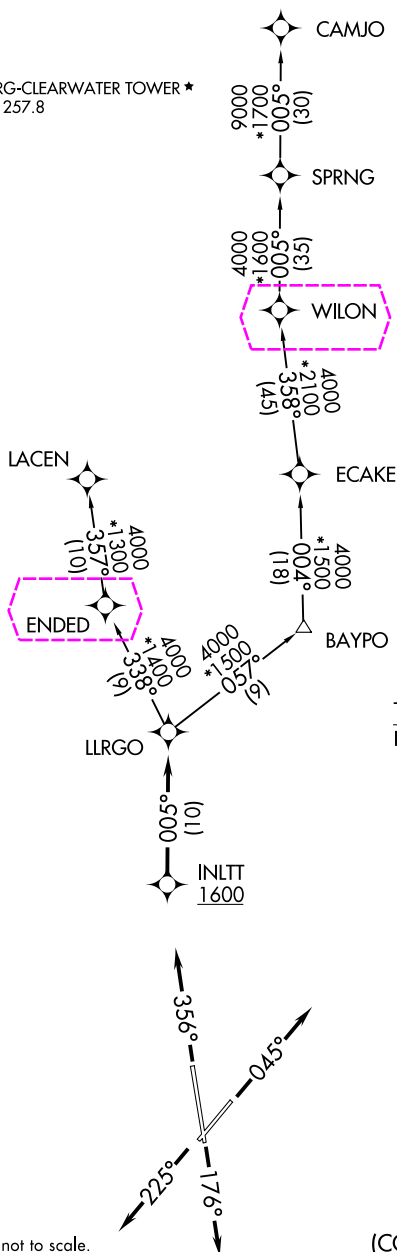
121.9 348.6

ST. PETERSBURG-CLEARWATER TOWER *

118.3 (CTAF) 257.8

RNAV 1 - DME/DME/IRU or GPS.

RADAR required.

TOP ALTITUDE:
1600NOTE: For jets less than 60,000 lbs
or as assigned by ATC.

TAKEOFF MINIMUMS

Rwys 4, 18, 36: Standard.

Rwy 22: 300-1 $\frac{1}{8}$ or standard with
minimum climb of 230'/NM
to 300, or alternatively, with
standard takeoff minimums
and a normal 200'/NM climb
gradient, takeoff must occur no
later than 1700' prior to DER.

NOTE: Chart not to scale.

(CONTINUED ON FOLLOWING PAGE)

LLRGO ONE DEPARTURE (RNAV)

(LLRGO1.LLRGO) 16MAY24

ST PETERSBURG-CLEARWATER, FLORIDA
ST PETE-CLEARWATER INTL (PIE)

SE-3, 07 AUG 2025 to 04 SEP 2025

SE-3, 07 AUG 2025 to 04 SEP 2025