

ST PETERSBURG-CLEARWATER, FLORIDA

AL-625 (FAA)

24081

LOC/DME I-CWT 108.7 Chan 24	APP CRS 356°	Rwy Idg 8720 TDZE 10 Apt Elev 11
---	------------------------	---

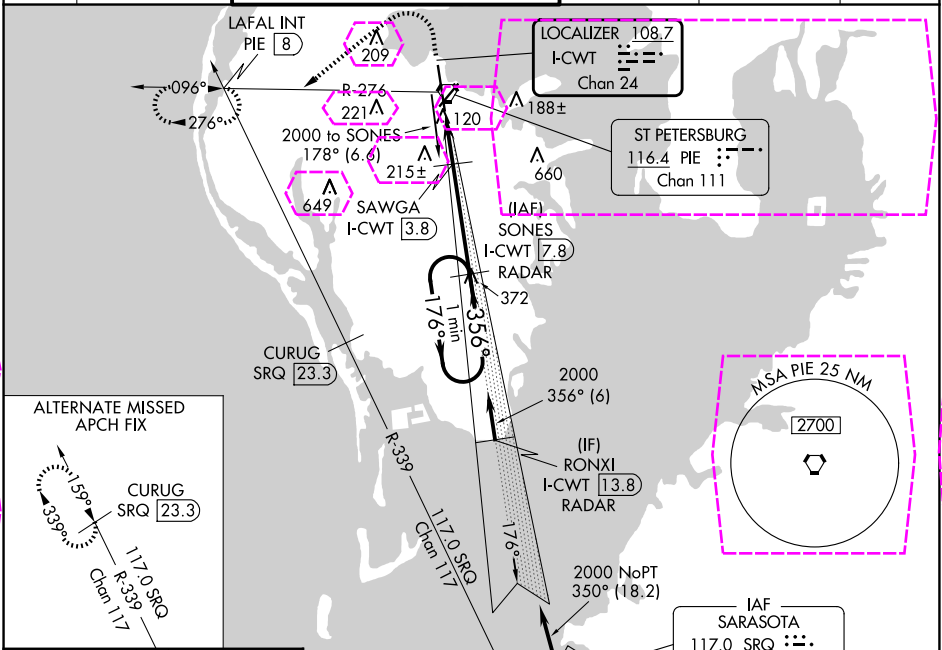
ILS or LOC RWY 36

ST PETE-CLEARWATER INTL (PIE)

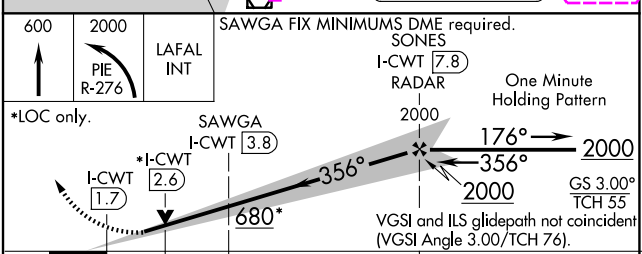
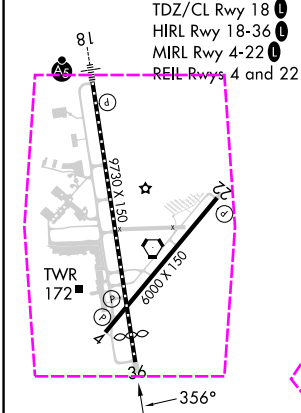
DME or RADAR required.

MISSED APPROACH: Climb to 600 then climbing left turn to 2000 on PIE VORTAC R-276 to LAFAL INT/PIE 8 DME and hold.

ATIS 134.5	TAMPA APP CON 125.3 316.05	ST PETERSBURG-CLEARWATER TOWER ★ 118.3 (CTAF) 0 257.8	GND CON 121.9 348.6	CLNC DEL 120.6 350.2	UNICOM 122.95
----------------------	--------------------------------------	---	-------------------------------	--------------------------------	-------------------------



ELEV 11	TDZE 10
---------	---------



CATEGORY	A	B	C	D	E
S-ILS 36	210/40 200 (200-¾)				
S-LOC 36	680/55	670 (700-1)	680-1/8 670 (700-1¾)		
CIRCLING	680-1	669 (700-1)	680-1½ 669 (700-1½)	680-2 669 (700-2)	960-3 949 (1000-3)
	SAWGA FIX MINIMUMS				
S-LOC 36	380/55 370 (400-1)				
CIRCLING	520-1	509 (600-1)	640-1½ 629 (700-1½)	680-2 669 (700-2)	960-3 949 (1000-3)

ST PETERSBURG-CLEARWATER, FLORIDA
Orig-A 10SEP20

27°55'N-82°41'W

ST PETE-CLEARWATER INTL (PIE)
ILS or LOC RWY 36

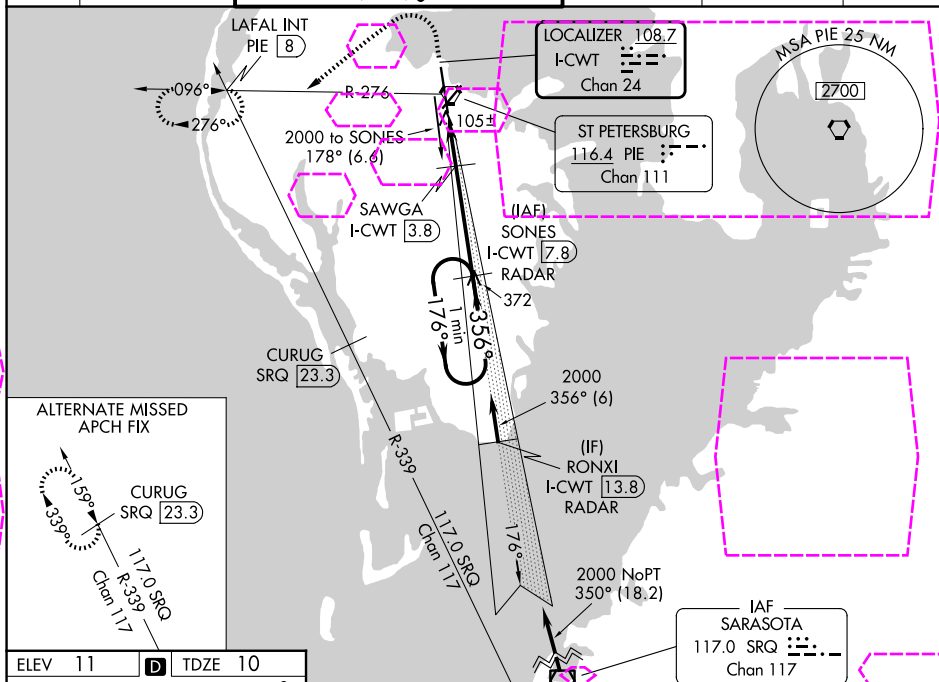
LOC/DME I-CWT <u>108.7</u> Chn 24	APP CRS 356°	Rwy Ldg 8720 TDZE 10 Apt Elev 11
---	------------------------	---

ILS or LOC RWY 36
ST PETE-CLEARWATER INTL (PIE)

DME or RADAR required.

MISSED APPROACH: Climb to 600 then climbing left turn to 2000 on PIE VORTAC R-276 to LAFAL INT/PIE 8 DME and hold.

ATIS 134.5	TAMPA APP CON 125.3 316.05	ST PETERSBURG-CLEARWATER TOWER ★ 118.3 (CTAF) 0 257.8	GND CON 121.9 348.6	CLNC DEL 120.6 350.2	UNICOM 122.95
---------------	-------------------------------	--	------------------------	-------------------------	------------------



ELEV 11 TDZE 10

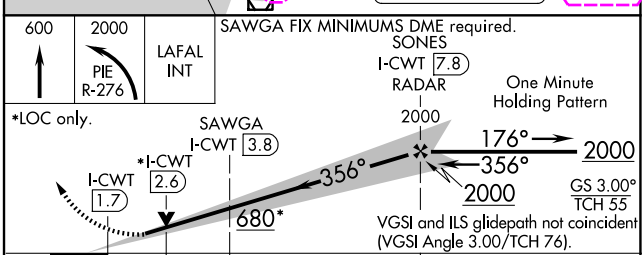
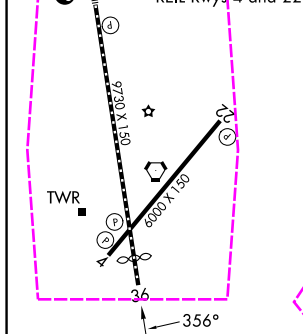
81

TDZ/CL Rwy 18 (L)

HRL Rwy 18-36 (L)

MIRL Rwy 4-22 (L)

REIL Rwy 4 and 22



CATEGORY	A	B	C	D	E
S-ILS 36	210/40 200 (200-¾)				
S-LOC 36	680/55 670 (700-1)		680-1⅞ 670 (700-1⅞)		
CIRCLING	680-1 669 (700-1)		680-1½ 669 (700-1½)	680-2 669 (700-2)	960-3 949 (1000-3)
SAWGA FIX MINIMUMS					
S-LOC 36	380/55 370 (400-1)				
CIRCLING	520-1 509 (600-1)		640-1½ 629 (700-1½)	680-2 669 (700-2)	960-3 949 (1000-3)