

ST PETERSBURG-CLEARWATER, FLORIDA

AL-625 (FAA)

24081

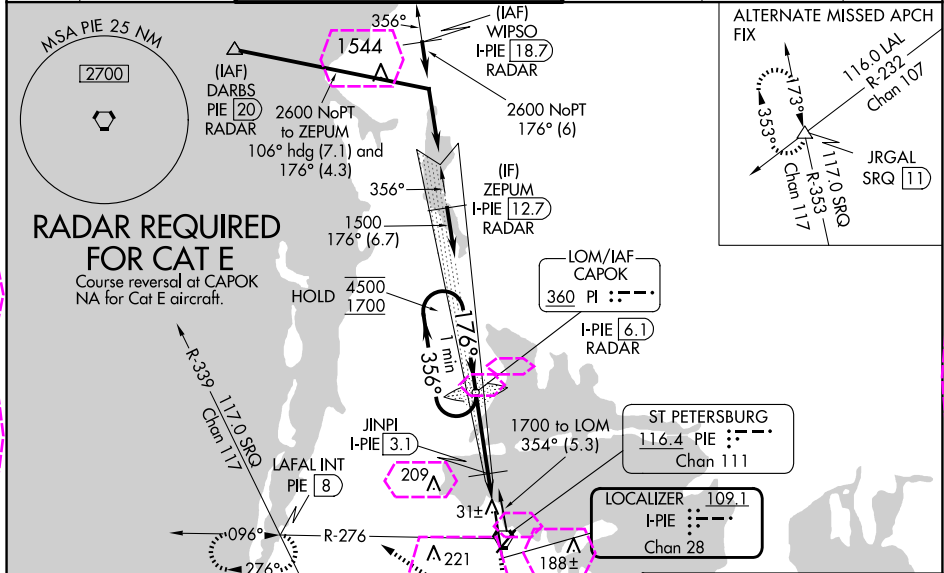
LOC/DME I-PIE 109.1 Chan 28	APP CRS 176°	Rwy Idg TDZE Apt Elev 9180 7 11
---	------------------------	---

ILS or LOC RWY 18

ST PETE-CLEARWATER INTL (PIE)

DME, RADAR, or ADF required.	MALSR 	MISSED APPROACH: Climb to 600 then climbing right turn to 1700 on heading 330° and PIE VORTAC R-276 to LAFAL INT/PIE VORTAC 8 DME and hold, continue climb-in-hold to 1700.
Cat E visibility to RVR 4000 and S-LOC 18 Cat E visibility to 1 1/2 SM. JINPI FIX MINIMUMS: For inop ALS, increase S-LOC 18 Cats C, D, and E visibility to RVR 4500.		

ATIS 134.5	TAMPA APP CON 125.3 316.05	ST PETERSBURG-CLEARWATER TOWER ★ 118.3 (CTAF) 0 257.8	GND CON 121.9 348.6	CLNC DEL 120.6 350.2	UNICOM 122.95
----------------------	--------------------------------------	---	-------------------------------	--------------------------------	-------------------------



ST PETERSBURG-CLEARWATER, FLORIDA

AL-625 (FAA)

25219

LOC/DME I-PIE 109.1 Chan 28	APP CRS 176°	Rwy Ldg 9180 TDZE 7 Apt Elev 11
---	------------------------	--

ILS or LOC RWY 18

ST PETE-CLEARWATER INTL (PIE)

DME, RADAR, or ADF required.

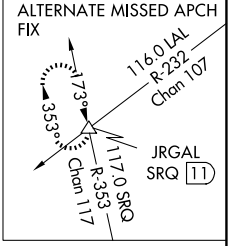
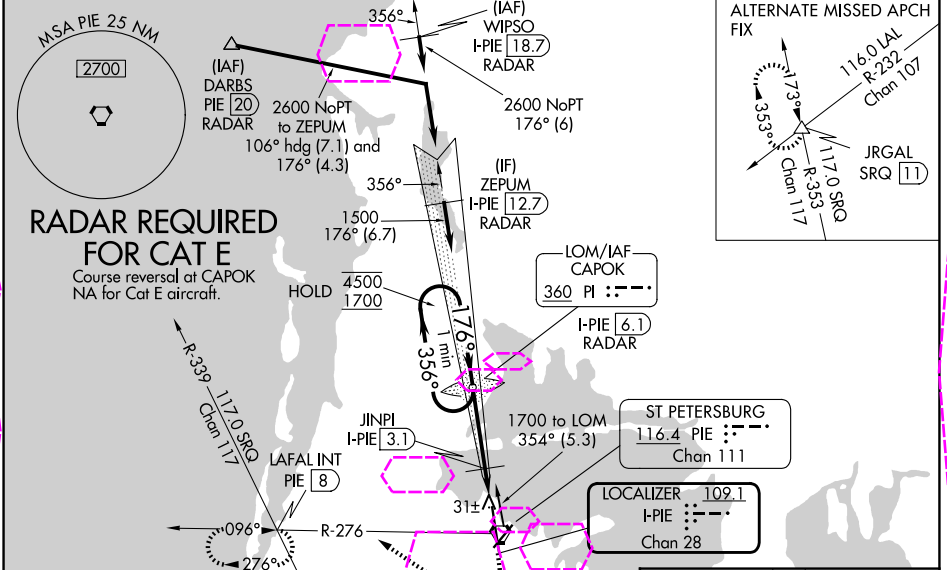
MALSR

⚠ Circling Rwy 22 NA at night. For inop ALS, increase S-ILS 18 Cat E visibility to RVR 4000 and S-LOC 18 Cat E visibility to 1½ SM.

JINPI FIX MINIMUMS: For inop ALS, increase S-LOC 18 Cats C, D, and E visibility to RVR 4500.

MISSED APPROACH: Climb to 600 then climbing right turn to 1700 on heading 330° and PIE VORTAC R-276 to LAFAL INT/PIE VORTAC 8 DME and hold, continue climb-in-hold to 1700.

ATIS 134.5	TAMPA APP CON 125.3 316.05	ST PETERSBURG-CLEARWATER TOWER ★ 118.3 (CTAF) 0 257.8	GND CON 121.9 348.6	CLNC DEL 120.6 350.2	UNICOM 122.95
----------------------	--------------------------------------	---	-------------------------------	--------------------------------	-------------------------



VGSI and ILS glidepath not coincident (VGSI Angle 3.00/TCH 68).
One Minute Holding Pattern

GS 3.00° TCH 53

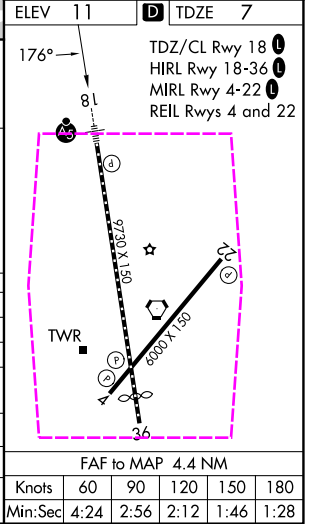
Use I-PIE DME when on the localizer course.

PI LOM CAPOK I-PIE [6.1] RADAR

JINPI I-PIE [3.1]

I-PIE [2.4] I-PIE [1.7]

3 NM 0.6 NM 0.7 NM



CATEGORY	A	B	C	D	E
S-ILS 18	207/18 200 (200-½)				
S-LOC 18	460/24	453 (500-½)	460/45	453 (500-¾)	
CIRCLING	520-1	509 (600-1)	640-1¾ 629 (700-1¾)	680-2 669 (700-2)	960-3 949 (1000-3)
JINPI FIX MINIMUMS					
S-LOC 18	300/24 293 (300-½)				
CIRCLING	520-1	509 (600-1)	640-1¾ 629 (700-1¾)	680-2 669 (700-2)	960-3 949 (1000-3)

SE-3, 07 AUG 2025 to 04 SEP 2025

SE-3, 07 AUG 2025 to 04 SEP 2025