

ST PETERSBURG-CLEARWATER, FLORIDA

AL-625 (FAA)

24081

LOC/DME I-PIE <b>109.1</b> Chan <b>28</b>	APP CRS <b>176°</b>	Rwy Idg <b>9180</b> TDZE <b>7</b> Apt Elev <b>11</b>
---	------------------------	--

# ILS RWY 18 (SA CAT I & II)

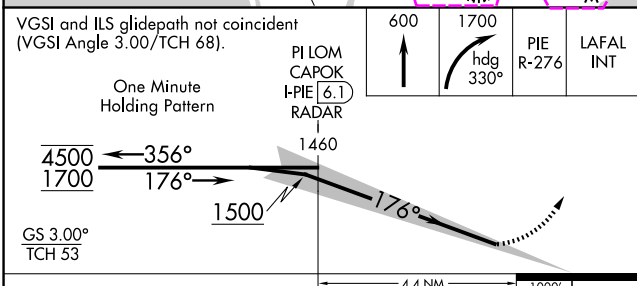
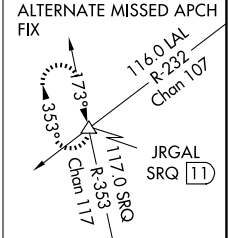
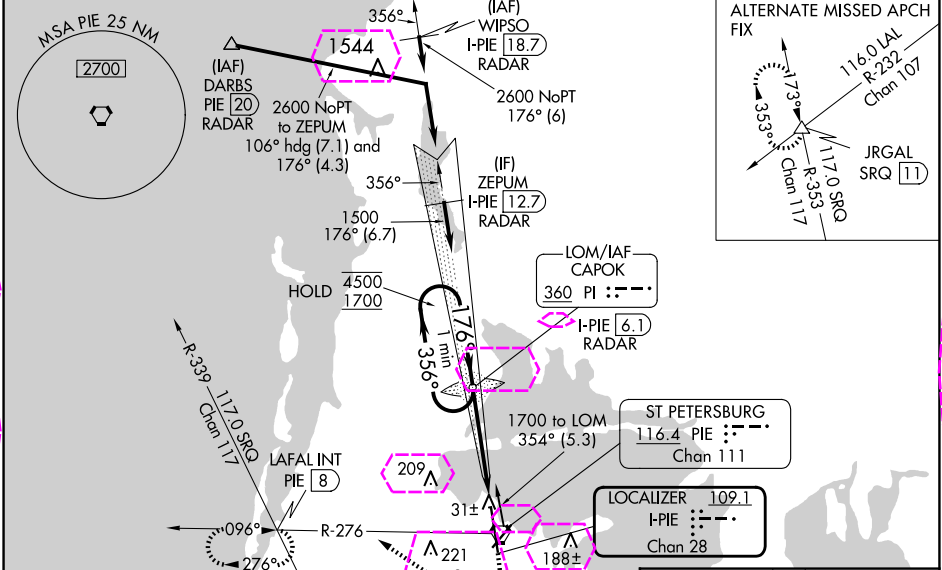
ST PETE-CLEARWATER INTL (PIE)

DME, RADAR, or ADF required.

MALSRR

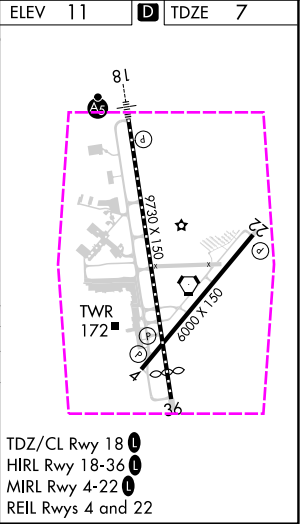
MISSED APPROACH: Climb to 600 then climbing right turn to 1700 on heading 330° and PIE VORTAC R-276 to LAFAL INT/PIE 8 DME and hold, continue climb-in-hold to 1700.

ATIS <b>134.5</b>	TAMPA APP CON <b>125.3 316.05</b>	ST PETERSBURG-CLEARWATER TOWER ★ <b>118.3 (CTAF) 0 257.8</b>	GND CON <b>121.9 348.6</b>	CLNC DEL <b>120.6 350.2</b>	UNICOM <b>122.95</b>
----------------------	--------------------------------------	---	-------------------------------	--------------------------------	-------------------------



CATEGORY	A	B	C	D
S-ILS 18	SA CAT I	RA 157/14	150	DA 157
S-ILS 18	SA CAT II	RA 107/12	100	DA 107

**SA CATEGORY I & II ILS - SPECIAL AIRCREW & AIRCRAFT CERTIFICATION REQUIRED**



TDZ/CL Rwy 18  
HIRL Rwy 18-36  
MIRL Rwy 4-22  
REIL Rwy 4 and 22

ST PETERSBURG-CLEARWATER, FLORIDA

Amdt 1 20APR23

27°55'N-82°41'W

ST PETE-CLEARWATER INTL (PIE)

**ILS RWY 18 (SA CAT I & II)**

SE-3, 10 JUL 2025 to 07 AUG 2025

SE-3, 10 JUL 2025 to 07 AUG 2025

ST PETERSBURG-CLEARWATER, FLORIDA

AL-625 (FAA)

25219

LOC/DME I-PIE <b>109.1</b> Chan <b>28</b>	APP CRS <b>176°</b>	Rwy Ldg <b>9180</b> TDZE <b>7</b> Apt Elev <b>11</b>
---	------------------------	--

# ILS RWY 18 (SA CAT I & II)

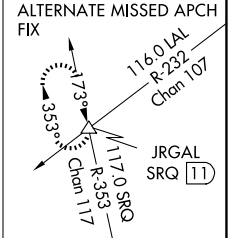
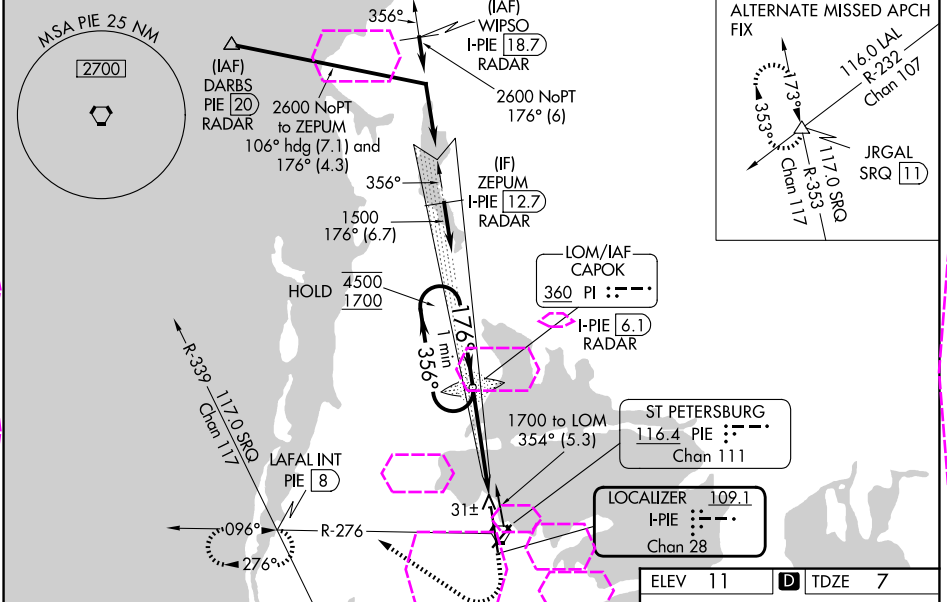
ST PETE-CLEARWATER INTL (PIE)

DME, RADAR, or ADF required.

MALSRR

MISSED APPROACH: Climb to 600 then climbing right turn to 1700 on heading 330° and PIE VORTAC R-276 to LAFAL INT/PIE 8 DME and hold, continue climb-in-hold to 1700.

ATIS <b>134.5</b>	TAMPA APP CON <b>125.3 316.05</b>	ST PETERSBURG-CLEARWATER TOWER ★ <b>118.3 (CTAF) 257.8</b>	GND CON <b>121.9 348.6</b>	CLNC DEL <b>120.6 350.2</b>	UNICOM <b>122.95</b>
----------------------	--------------------------------------	---	-------------------------------	--------------------------------	-------------------------



VGSI and ILS glidepath not coincident (VGSI Angle 3.00/TCH 68).			
One Minute Holding Pattern			
PI LOM CAPOK I-PIE 6.1 RADAR			
GS 3.00° TCH 53			
CATEGORY	A	B	C
S-ILS 18	SA CAT I RA 157/14	150 DA 157	
S-ILS 18	SA CAT II RA 107/12	100 DA 107	

ELEV 11 D TDZE 7

Diagram of the runway and taxiway layout showing the tower (TWR), taxiway (A), and runway (18) with various altitudes and distances.

TDZ/CL Rwy 18 1  
HIRL Rwy 18-36 1  
MIRL Rwy 4-22 1  
REIL Rwy 4 and 22 1

**SA CATEGORY I & II ILS - SPECIAL AIRCREW & AIRCRAFT CERTIFICATION REQUIRED**

ST PETERSBURG-CLEARWATER, FLORIDA

Amdt 1 20APR23

27°55'N-82°41'W

ST PETE-CLEARWATER INTL (PIE)  
**ILS RWY 18 (SA CAT I & II)**

SE-3, 07 AUG 2025 to 04 SEP 2025

SE-3, 07 AUG 2025 to 04 SEP 2025