

(BAYPO2.BAYPO) 24137

AL-625 (FAA)

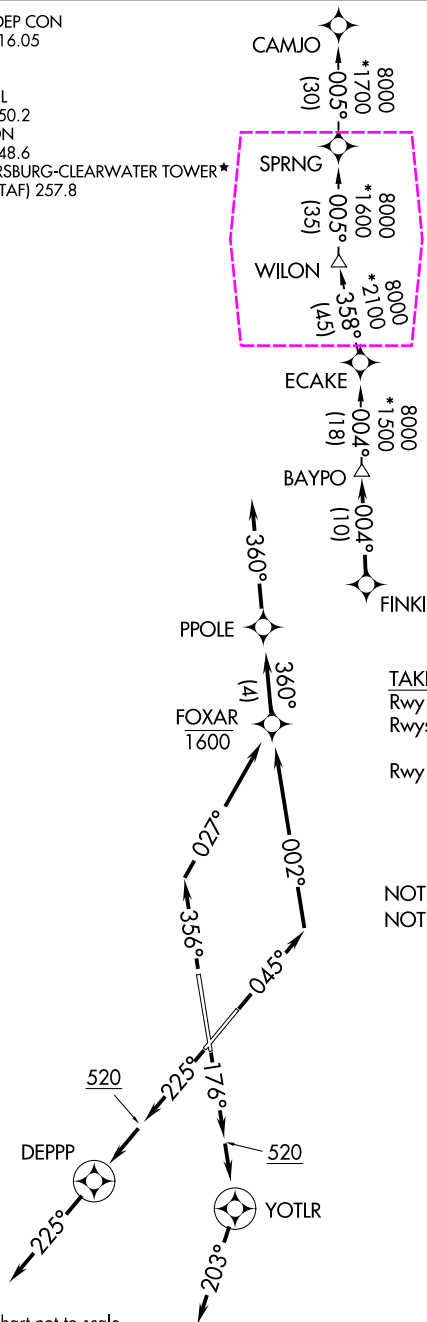
ST PETE-CLEARWATER INTL (PIE)  
ST PETERSBURG-CLEARWATER, FLORIDA

## BAYPO TWO DEPARTURE (RNAV)

TAMPA DEP CON  
125.3 316.05  
ATIS  
134.5  
CLNC DEL  
120.6 350.2  
GND CON  
121.9 348.6  
ST. PETERSBURG-CLEARWATER TOWER\*  
118.3 (CTAF) 257.8

**TOP ALTITUDE:**  
**1600**

RNAV 1 - DME/DME/IRU or GPS required.  
RADAR required.

TAKEOFF MINIMUMS

Rwy 18: Standard.

Rwys 4, 36: Standard with minimum climb of 500'/NM to 520.

Rwy 22: Standard with minimum climb of 230'/NM to 300.

NOTE: Jet aircraft only.

NOTE: WILON Transition for use by aircraft filed to Jacksonville area airports only, or as assigned by ATC.

NOTE: Chart not to scale.

(CONTINUED ON FOLLOWING PAGE)

BAYPO TWO DEPARTURE (RNAV)

(BAYPO2.BAYPO) 16MAY24

ST PETERSBURG-CLEARWATER, FLORIDA  
ST PETE-CLEARWATER INTL (PIE)

SE-3, 10 JUL 2025 to 07 AUG 2025

SE-3, 10 JUL 2025 to 07 AUG 2025

(BAYPO2.BAYPO) 25219

AL-625 (FAA)

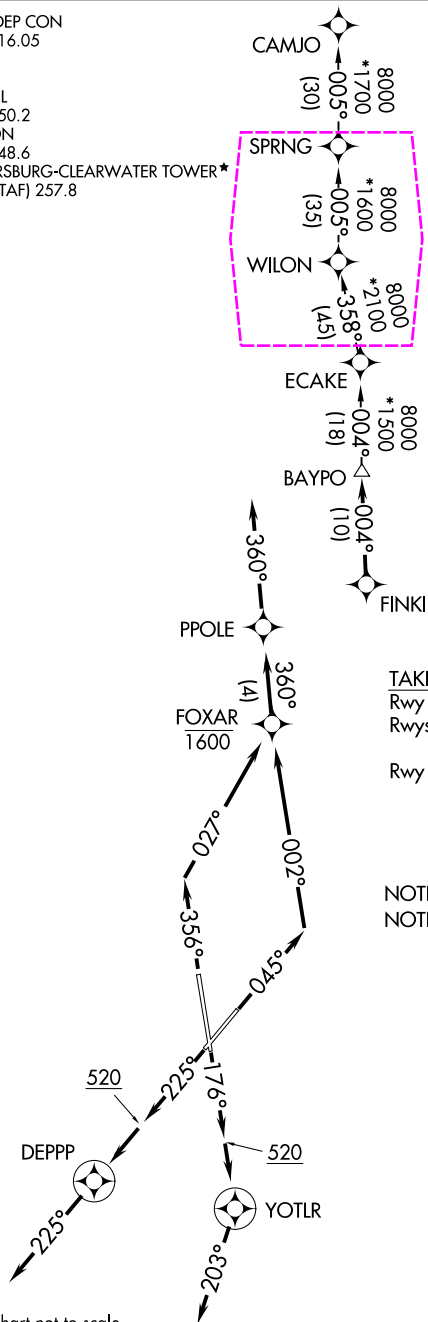
ST PETE-CLEARWATER INTL (PIE)  
ST PETERSBURG-CLEARWATER, FLORIDA

## BAYPO TWO DEPARTURE (RNAV)

TAMPA DEP CON  
125.3 316.05  
ATIS  
134.5  
CLNC DEL  
120.6 350.2  
GND CON  
121.9 348.6  
ST. PETERSBURG-CLEARWATER TOWER\*  
118.3 (CTAF) 257.8

**TOP ALTITUDE:**  
**1600**

RNAV 1 - DME/DME/IRU or GPS required.  
RADAR required.



## TAKEOFF MINIMUMS

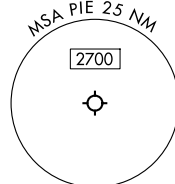
Rwy 18: Standard.

Rwys 4, 36: Standard with minimum climb of 500'/NM to 520.

Rwy 22: Standard with minimum climb of 230'/NM to 300.

NOTE: Jet aircraft only.

NOTE: WILON Transition for use by aircraft filed to Jacksonville area airports only, or as assigned by ATC.



NOTE: Chart not to scale.

(CONTINUED ON FOLLOWING PAGE)

BAYPO TWO DEPARTURE (RNAV)

(BAYPO2.BAYPO) 16MAY24

ST PETERSBURG-CLEARWATER, FLORIDA  
ST PETE-CLEARWATER INTL (PIE)

SE-3, 07 AUG 2025 to 04 SEP 2025

SE-3, 07 AUG 2025 to 04 SEP 2025