

WAAS CH <b>78140</b> <b>W06A</b>	APP CRS <b>060°</b>	Rwy Ldg <b>4677</b> TDZE <b>7</b> Apt Elev <b>9</b>
--	------------------------	---

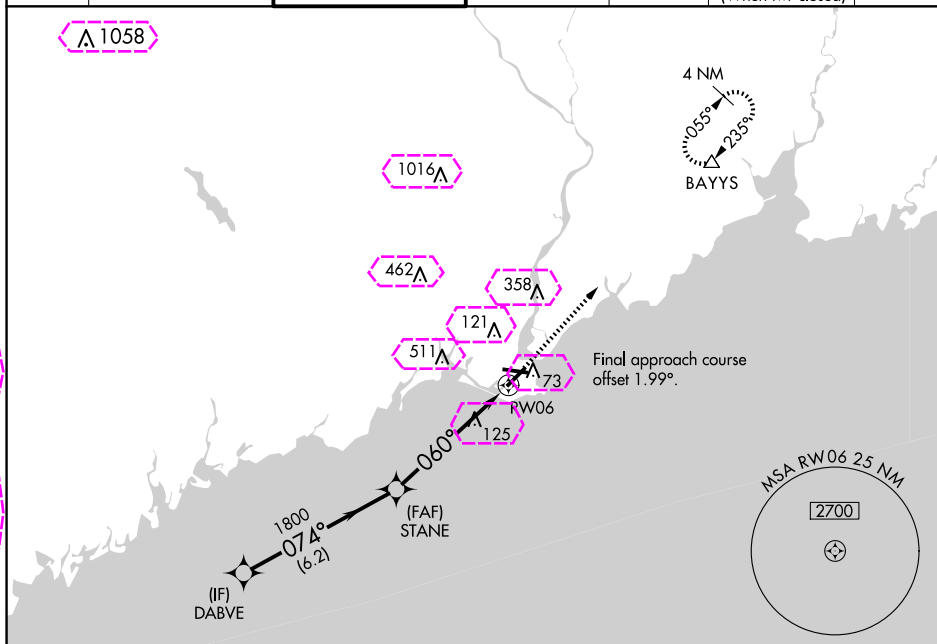
RNAV (GPS) RWY 6  
BRIDGEPORT/SIKORSKY (BDR)

RNP APCH - GPS.

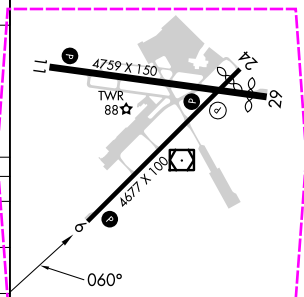
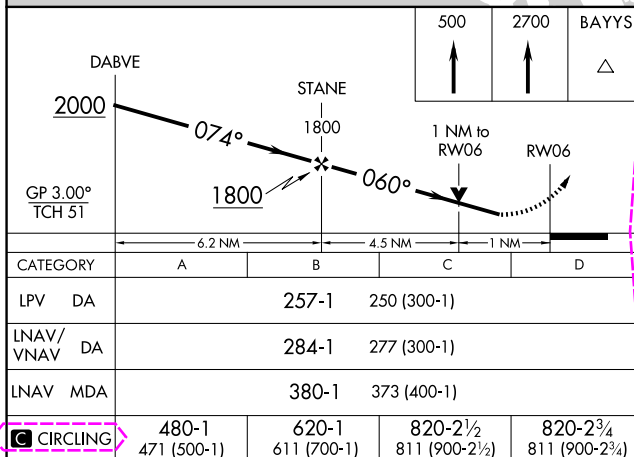
**T** For uncompensated Baro-VNAV systems, LNAV/VNAV NA below -14°C or above 54°C.  
**A** Circling to Rwy 11, 29 NA at night. Rwy 6 helicopter visibility reduction below  $\frac{3}{4}$  SM NA.


**MISSED APPROACH:** Climb to 500, then climb to 2700 direct BAYYS and hold, continue climb-in-hold 2700.

ATIS 119.15	NEW YORK APP CON 124.075 343.65	BRIDGEPORT TOWER* 120.9 0 (CTAF) 257.8	GND CON 121.75 257.8	CLNC DEL 121.75	CLNC DEL 124.075 (When twr closed)	UNICOM 123.0
----------------	------------------------------------	---	-------------------------	--------------------	--	-----------------



ELEV 9	<b>D</b>	TDZE 7
--------	----------	--------



 CIRCLING	480-1 471 (500-1)	620-1 611 (700-1)	820-2½ 811 (900-2½)	820-2¾ 811 (900-2¾)
--	----------------------	----------------------	------------------------	------------------------

REIL Rwys 6, 11, 24, and 29 **L**  
HIRL Rwys 6-24 and 11-29 **L**

NE-1, 10 JUL 2025 to 07 AUG 2025

NE-1, 10 JUL 2025 to 07 AUG 2025

BRIDGEPORT, CONNECTICUT

AL-621 (FAA)

25219

WAAS CH <b>78140</b> <b>W06A</b>	APP CRS <b>060°</b>	Rwy Ldg TDZE <b>4677</b> Apt Elev <b>7</b> <b>9</b>
--	------------------------	--

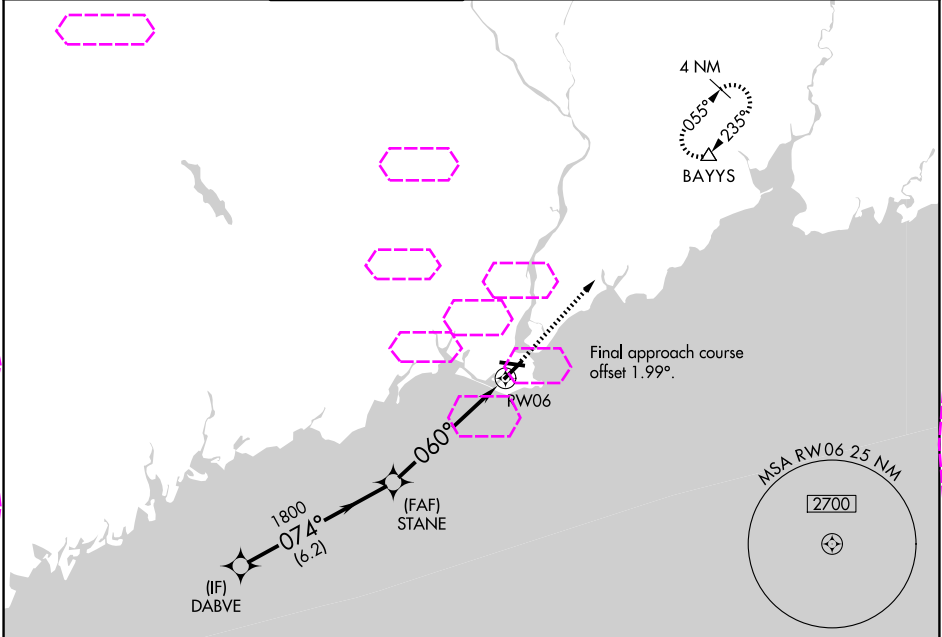
**RNAV (GPS) RWY 6**  
BRIDGEPORT/SIKORSKY (BDR)

RNP APCH - GPS.

- ▼ For uncompensated Baro-VNAV systems, LNAV/VNAV NA below -14°C or above 54°C.  
▲ Circling to Rwy 11, 29 NA at night. Rwy 6 helicopter visibility reduction below  $\frac{3}{4}$  SM NA.

**MISSED APPROACH:** Climb to 500, then climb to 2700 direct BAYYS and hold, continue climb-in-hold 2700.

ATIS <b>119.15</b>	NEW YORK APP CON <b>124.075 343.65</b>	BRIDGEPORT TOWER★ <b>120.9 0</b> (CTAF) <b>257.8</b>	GND CON <b>121.75 257.8</b>	CLNC DEL <b>121.75</b>	CLNC DEL <b>124.075</b> (When twr closed)	UNICOM <b>123.0</b>
-----------------------	---	---	--------------------------------	---------------------------	---	------------------------



ELEV <b>9</b> <b>D</b> TDZE <b>7</b>					
		500 2700 BAYYS ↑ ↑ △			
DABVE		STANE			
2000		1800			
GP 3.00° TCH 51		074° 1800 060°			
		1 NM to RWY 06 RWY 06			
		6.2 NM 4.5 NM 1 NM			
CATEGORY	A	B	C	D	
LPV DA		257-1	250 (300-1)		
LNAV/VNAV DA		284-1	277 (300-1)		
LNAV MDA		380-1	373 (400-1)		
CIRCLING	480-1 471 (500-1)	620-1 611 (700-1)	820-2½ 811 (900-2½)	820-2¾ 811 (900-2¾)	REIL Rwys 6, 11, 24, and 29 HIRL Rwys 6-24 and 11-29

BRIDGEPORT, CONNECTICUT

Amdt 2 12JUN25

41°10'N-73°08'W

**BRIDGEPORT/SIKORSKY (BDR)**  
**RNAV (GPS) RWY 6**

NE-1, 07 AUG 2025 to 04 SEP 2025

NE-1, 07 AUG 2025 to 04 SEP 2025