

BRIDGEPORT, CONNECTICUT

AL-621 (FAA)

25163

WAAS CH 49047 W24A	APP CRS 238°	Rwy Ldg TDZE Apt Elev	4357 7 9
--	------------------------	-----------------------------	-------------------------------------

RNAV (GPS) RWY 24

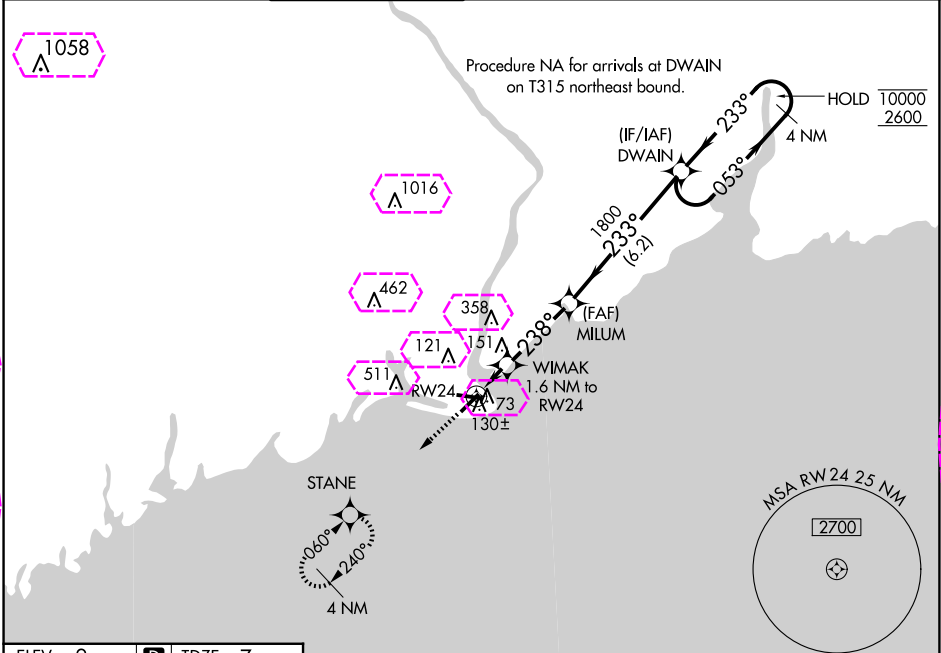
BRIDGEPORT/SIKORSKY (BDR)

RNP APCH - GPS.

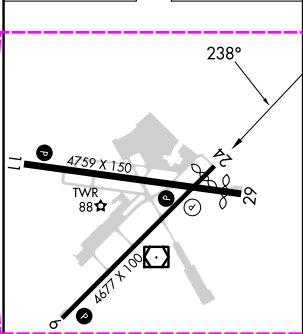
V Circling to Rwy 11, 29 NA at night. Rwy 24 helicopter visibility reduction below $\frac{3}{4}$ SM NA. For uncompensated Baro-VNAV systems, LNAV/VNAV NA below -1.4°C or above 47°C.

MISSED APPROACH: Climb to 500, then climb to 1800 direct STANE and hold, continue climb-in-hold 1800.

ATIS 119.15	NEW YORK APP CON 124.075 343.65	BRIDGEPORT TOWER★ 120.9 (CTAF) 257.8	GND CON 121.75 257.8	CLNC DEL 121.75	CLNC DEL 124.075 (When twr closed)	UNICOM 123.0
-----------------------	---	---	--------------------------------	---------------------------	---	------------------------



ELEV 9	D	TDZE 7
--------	----------	--------



BRIDGEPORT, CONNECTICUT

AL-621 (FAA)

25219

WAAS CH 49047 W24A	APP CRS 238°	Rwy Ldg TDZE Apt Elev	4357 7 9
--	------------------------	-----------------------------	-------------------------------------

RNAV (GPS) RWY 24

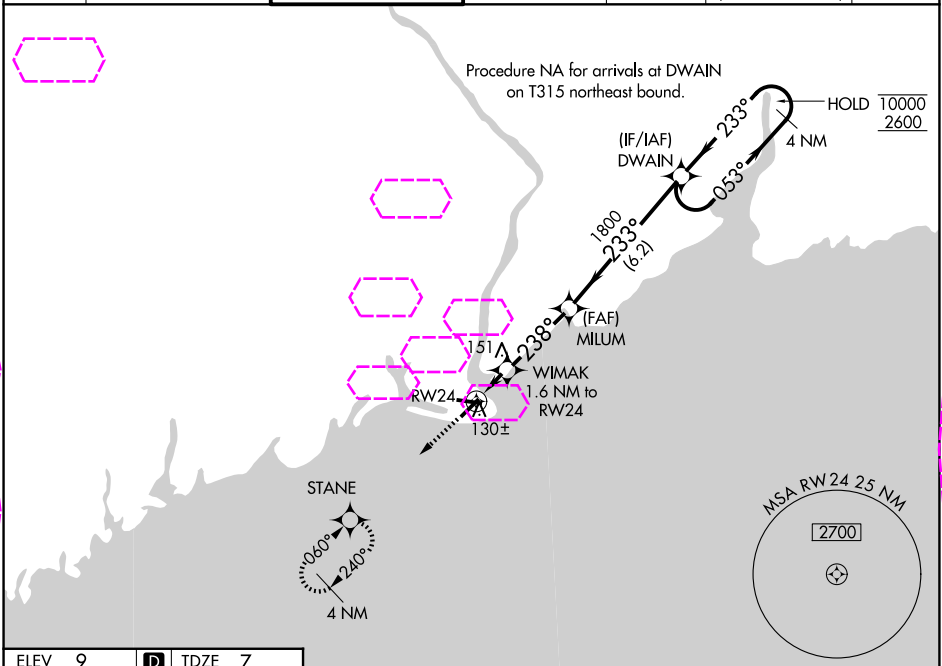
BRIDGEPORT/SIKORSKY (BDR)

RNP APCH - GPS.

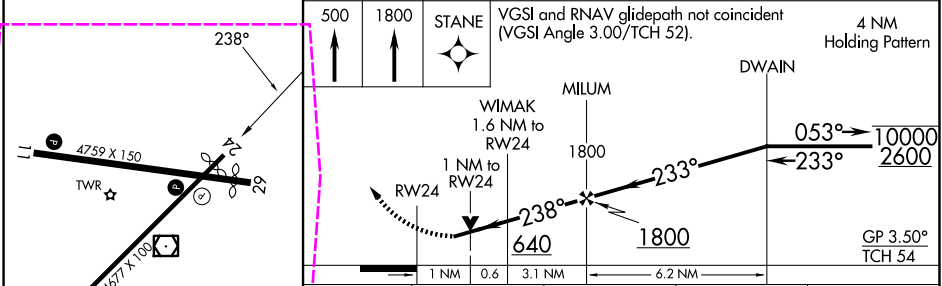
⚠ Circling to Rwy 11, 29 NA at night. Rwy 24 helicopter visibility reduction below 3/4 SM NA. For uncompensated Baro-VNAV systems, LNAV/VNAV NA below -14°C or above 47°C.

MISSED APPROACH: Climb to 500, then climb to 1800 direct STANE and hold, continue climb-in-hold 1800.

ATIS 119.15	NEW YORK APP CON 124.075 343.65	BRIDGEPORT TOWER★ 120.9 0 (CTAF) 257.8	GND CON 121.75 257.8	CLNC DEL 121.75	CLNC DEL 124.075 (When twr closed)	UNICOM 123.0
-----------------------	---	---	--------------------------------	---------------------------	---	------------------------



ELEV 9	D	TDZE 7
--------	----------	--------



CATEGORY	A	B	C	D
LPV DA		301-1	294 (300-1)	
LNAV/VNAV DA		311-1	304 (400-1)	
LNAV MDA		380-1	373 (400-1)	
CIRCLING	480-1 471 (500-1)	620-1 611 (700-1)	820-2½ 811 (900-2½)	820-2¾ 811 (900-2¾)

REIL Rwy 6, 11, 24, and 29 **0**
HRL Rwy 6-24 and 11-29 **0**

BRIDGEPORT, CONNECTICUT

Amdt 2 12JUN25

41°10'N-73°08'W

BRIDGEPORT/SIKORSKY (BDR)

RNAV (GPS) RWY 24

NE-1, 07 AUG 2025 to 04 SEP 2025

NE-1, 07 AUG 2025 to 04 SEP 2025