

LOC/DME I-BDR <b>110.7</b> Chan <b>44</b>	APP CRS <b>060°</b>	Rwy Ldg <b>4677</b> TDZE <b>7</b> Apt Elev <b>9</b>
---	------------------------	---

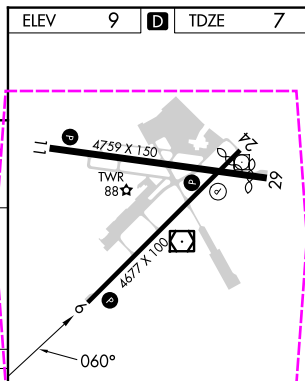
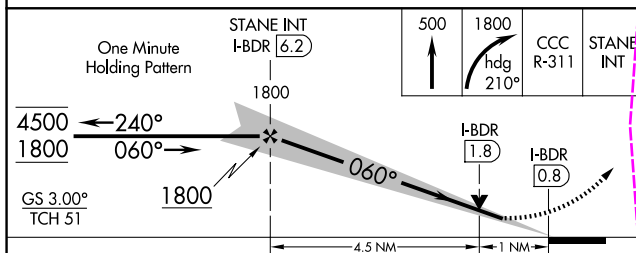
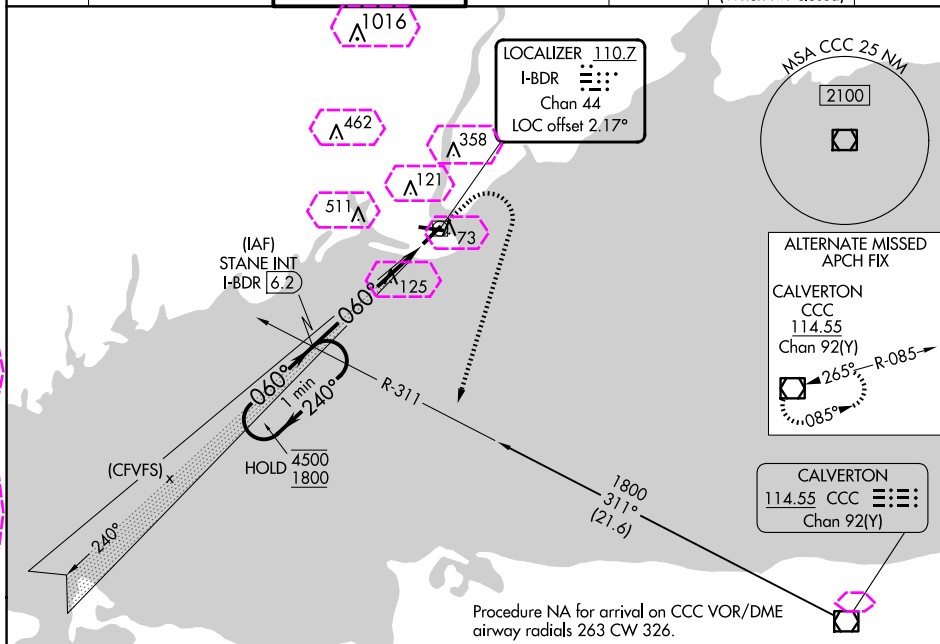
ILS or LOC RWY 6  
BRIDGEPORT/SIKORSKY (BDR)

BRIDGEPORT/SIKORSKY (BDR)

**T** Circling to Rwy 11, 29 NA at night. Rwy 6 helicopter  
**A** visibility reduction below  $\frac{3}{4}$  SM NA. Autopilot coupled  
approach NA below 350.

**MISSED APPROACH:** Climb to 500 then climbing right turn to 1800 on heading 210° and CCC VOR/DME R-311 to STANE INT/I-BDR 6.2 DME and hold, continue climb-in-hold to 1800.

ATIS 119.15	NEW YORK APP CON 124.075 343.65	BRIDGEPORT TOWER★ 120.9 0 (CTAF) 257.8	GND CON 121.75 257.8	CLNC DEL 121.75	CLNC DEL 124.075 (When twr closed)	UNICOM 123.0
----------------	------------------------------------	---	-------------------------	--------------------	--	-----------------



CATEGORY	A	B	C	D
S-ILS 6	257-1 250 (300-1)			
S-LOC 6	380-1 373 (400-1)			
<b>C</b> CIRCULING	480-1 471 (500-1)	620-1 611 (700-1)	820-2½ 811 (900-2½)	820-2¾ 811 (900-2¾)

REIL Rwy 6, 11, 24, and 29 <b>L</b> HIRL Rwy 6-24 and 11-29 <b>L</b>					
FAF to MAP 5.5 NM					
Knots	60	90	120	150	180
Min:Sec	5:30	3:40	2:45	2:12	1:50

BRIDGEPORT, CONNECTICUT

AL-621 (FAA)

25219

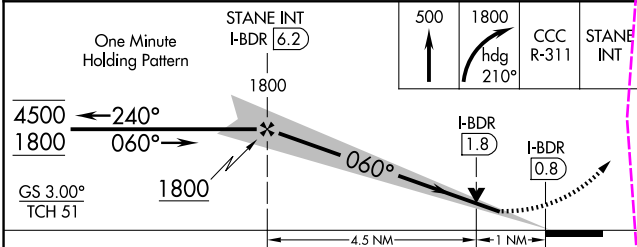
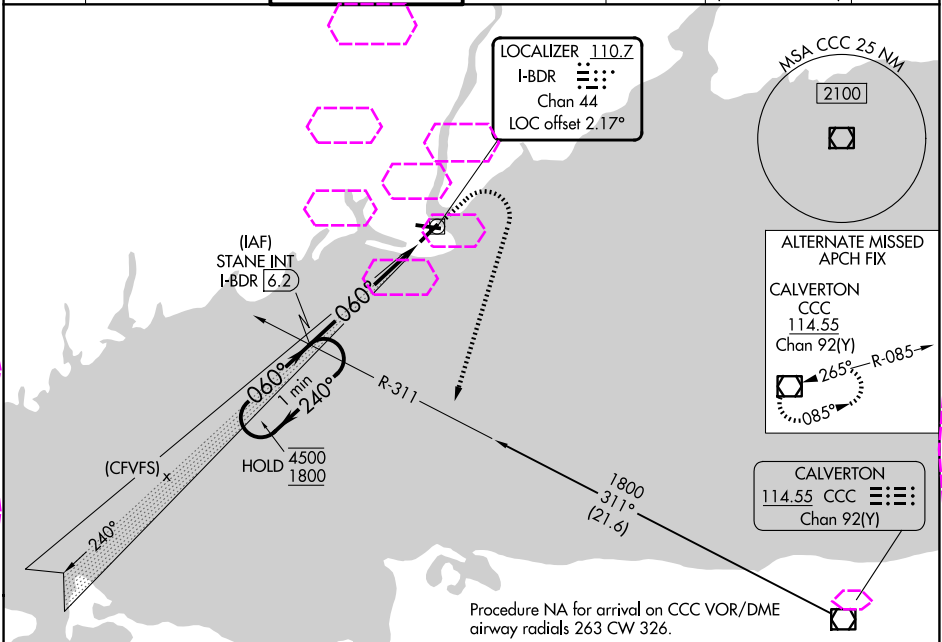
LOC/DME I-BDR	APP CRS	Rwy Ldg
<b>110.7</b>	<b>060°</b>	<b>4677</b>
Chan <b>44</b>		TDZE <b>7</b>
		Apt Elev <b>9</b>

ILS or LOC RWY 6  
BRIDGEPORT/SIKORSKY (BDR)

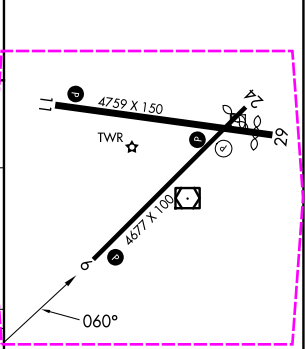
**⚠** Circling to Rwy 11, 29 NA at night. Rwy 6 helicopter visibility reduction below 3/4 SM NA. Autopilot coupled approach NA below 350.

**⚠** MISSED APPROACH: Climb to 500 then climbing right turn to 1800 on heading 210° and CCC VOR/DME R-311 to STANE INT/I-BDR 6.2 DME and hold, continue climb-in-hold to 1800.

ATIS <b>119.15</b>	NEW YORK APP CON <b>124.075 343.65</b>	BRIDGEPORT TOWER★ <b>120.9 0</b> (CTAF) <b>257.8</b>	GND CON <b>121.75 257.8</b>	CLNC DEL <b>121.75</b>	CLNC DEL <b>124.075</b> (When twr closed)	UNICOM <b>123.0</b>
-----------------------	---	---	--------------------------------	---------------------------	---	------------------------



ELEV	9	TDZE	7
------	---	------	---



CATEGORY	A	B	C	D
S-ILS 6		257-1	250 (300-1)	
S-LOC 6		380-1	373 (400-1)	
CIRCLING	480-1 471 (500-1)	620-1 611 (700-1)	820-2½ 811 (900-2½)	820-2¾ 811 (900-2¾)

REIL Rwy 6, 11, 24, and 29	
HIRL Rwy 6-24 and 11-29	
FAF to MAP 5.5 NM	
Knots	60 90 120 150 180
Min:Sec	5:30 3:40 2:45 2:12 1:50

BRIDGEPORT, CONNECTICUT  
Amdt 11 12JUN25

41°10'N-73°08'W

BRIDGEPORT/SIKORSKY (BDR)  
ILS or LOC RWY 6

NE-1, 07 AUG 2025 to 04 SEP 2025

NE-1, 07 AUG 2025 to 04 SEP 2025