

BOULDER CITY, NEVADA



AL-612 (FAA)

25219

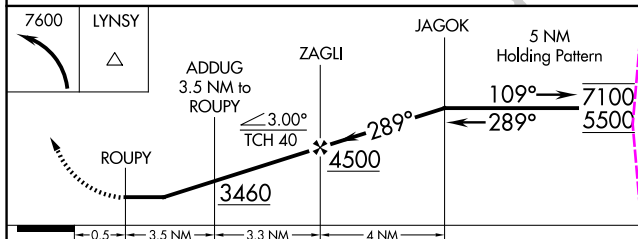
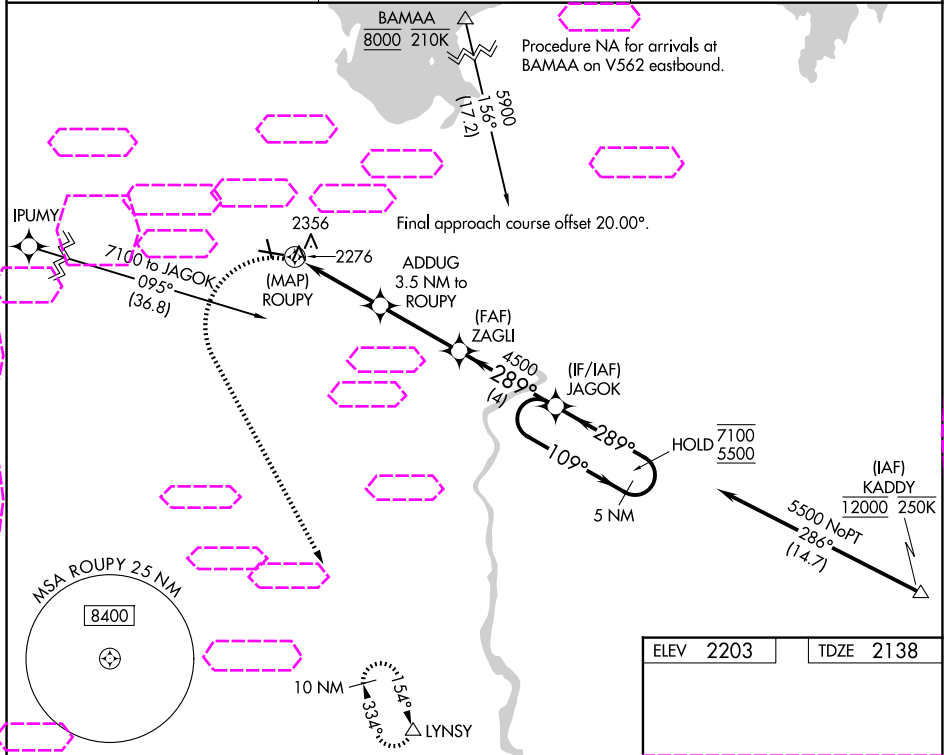
WAAS CH 77643 W27A	APP CRS 289°	Rwy Ldg TDZE Apt Elev	4803 2138 2203
--	------------------------	-----------------------------	---

RNAV (GPS) RWY 27

BOULDER CITY MUNI (BVU)

RNP APCH.	MISSED APPROACH: Climbing left turn to 7600 direct LYNZY and hold, continue climb-in-hold to 7600.
 Procedure NA at night.  Rwy 27 helicopter visibility reduction below 1 SM NA.	

AWOS-3 118.475	LAS VEGAS APP CON 125.475 307.25	UNICOM 122.7 (CTAF) 0
--------------------------	--	---------------------------------



ELEV 2203	TDZE 2138
-----------	-----------

CATEGORY	A	B	C	D
LP MDA	2640-1	502 (500-1)	2640-1 3/8 502 (500-1 3/8)	NA
LNAV MDA	2940-1 802 (800-1)	2940-1 1/4 802 (800-1 1/4)	2940-2 1/2 802 (800-2 1/2)	NA
CIRCLING	2980-1 1/4 777 (800-1 1/4)	3360-1 1/2 1157 (1200-1 1/2)	4000-3 1797 (1800-3)	NA

