

(SKORR5.SKORR) 23250

AL-610 (FAA)

JOHN F KENNEDY INTL (JFK)

NEW YORK, NEW YORK

SKORR FIVE DEPARTURE (RNAV)

D-ATIS
128.725
CLNC DEL
135.05 348.6
CPDLC
NEW YORK DEP CON
135.9 353.75

RNAV 1 - DME/DME/IRU or GPS required.

RADAR required.

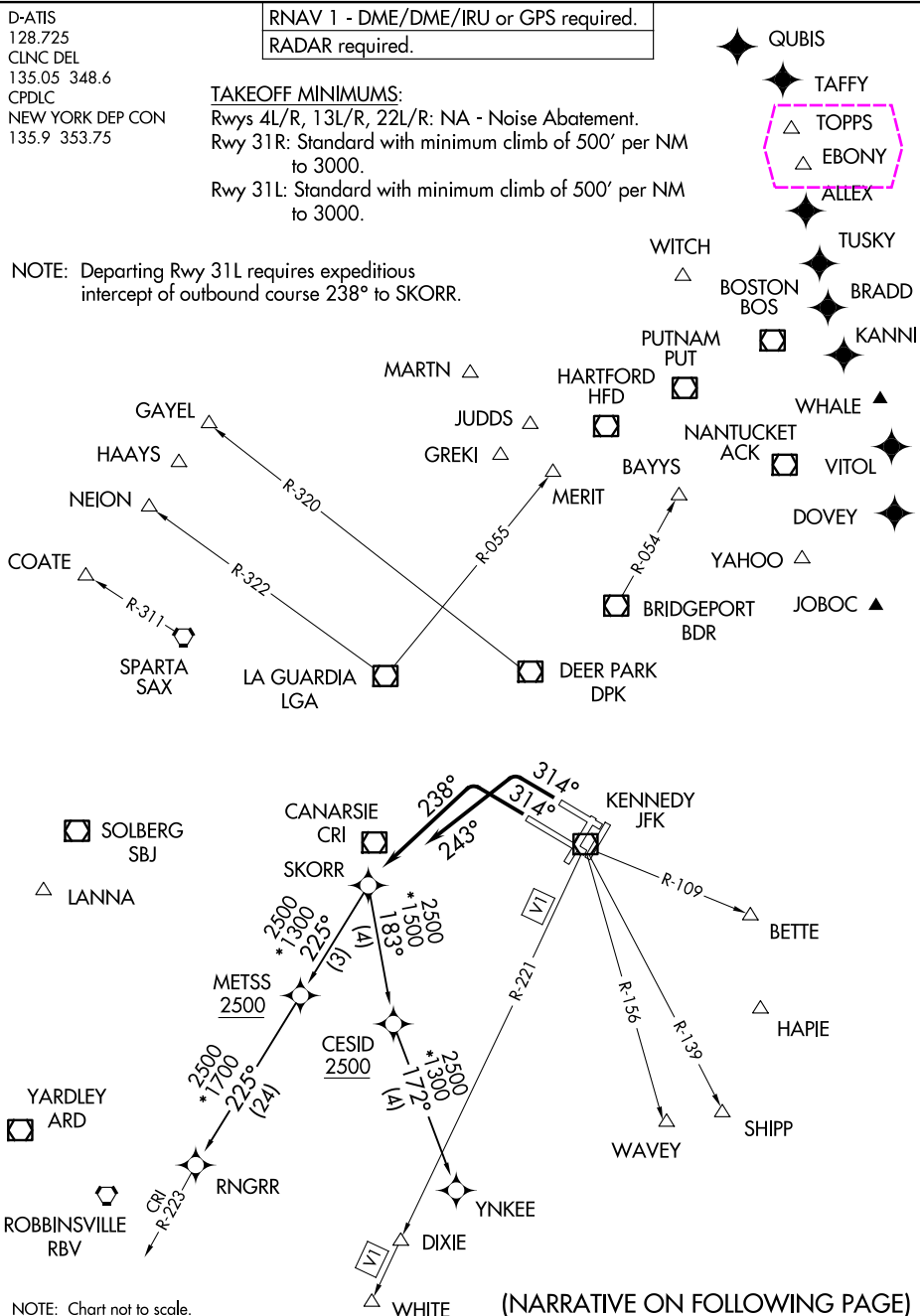
TAKEOFF MINIMUMS:

Rwys 4L/R, 13L/R, 22L/R: NA - Noise Abatement.

Rwy 31R: Standard with minimum climb of 500' per NM to 3000.

Rwy 31L: Standard with minimum climb of 500' per NM to 3000.

NOTE: Departing Rwy 31L requires expeditious intercept of outbound course 238° to SKORR.



SKORR FIVE DEPARTURE (RNAV)

(SKORR5.SKORR) 29DEC22

NEW YORK, NEW YORK

JOHN F KENNEDY INTL (JFK)

(SKORR5.SKORR) 25219

AL-610 (FAA)

JOHN F KENNEDY INTL (JFK)

NEW YORK, NEW YORK

SKORR FIVE DEPARTURE (RNAV)

D-ATIS
128.725
CLNC DEL
135.05 348.6
CPDLC
NEW YORK DEP CON
135.9 353.75

RNAV 1 - DME/DME/IRU or GPS required.

RADAR required.

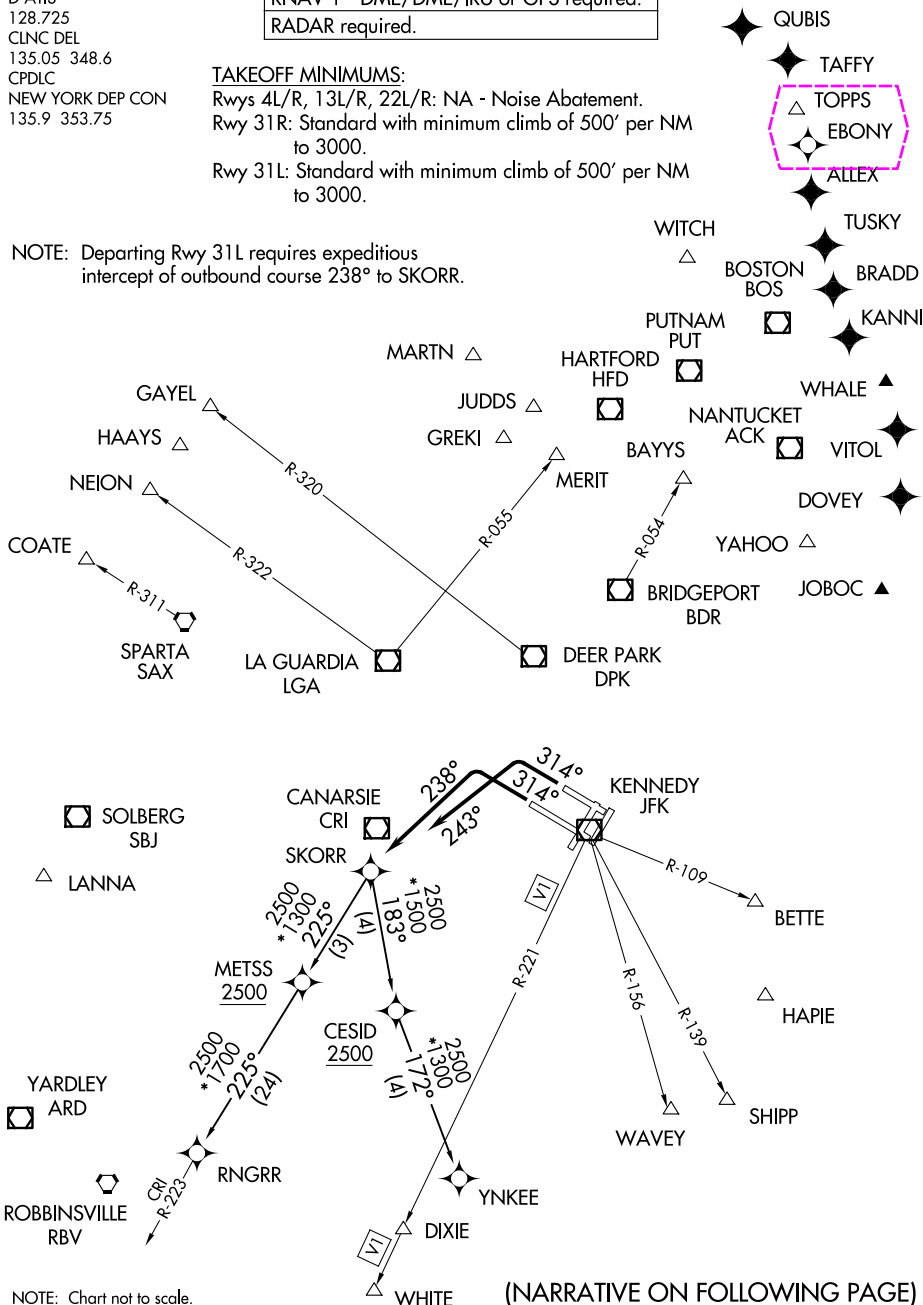
TAKEOFF MINIMUMS:

Rwys 4L/R, 13L/R, 22L/R: NA - Noise Abatement.

Rwy 31R: Standard with minimum climb of 500' per NM to 3000.

Rwy 31L: Standard with minimum climb of 500' per NM to 3000.

NOTE: Departing Rwy 31L requires expeditious intercept of outbound course 238° to SKORR.



SKORR FIVE DEPARTURE (RNAV)

(SKORR5.SKORR) 29DEC22

NEW YORK, NEW YORK

JOHN F KENNEDY INTL (JFK)