

SPRINGFIELD, MISSOURI

AL-604 (FAA)

24081

VORTAC SGF 116.9 Chan 116	APP CRS 196°	Rwy Idg TDZE 1262 Apt Elev 1268	7003
---	------------------------	---	-------------

VOR or TACAN RWY 20

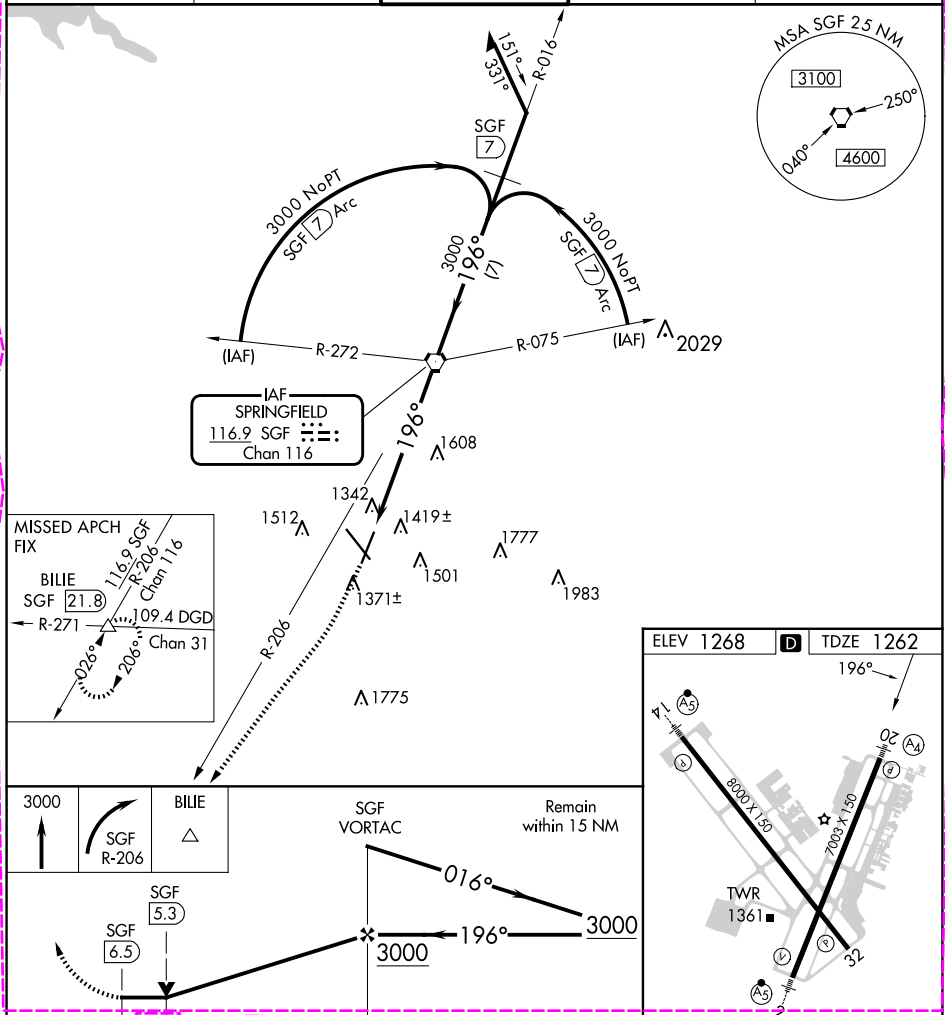
SPRINGFIELD-BRANSON NTL (SGF')

⚠ Inoperative table does not apply to Cat C. Helicopter visibility reduction below $\frac{3}{4}$ SM not authorized. When local altimeter setting not received, use Monett altimeter setting and increase all MDA 100 feet, increase S-20 Cat C/D/E visibility $\frac{1}{4}$ mile, increase Circling Cat C/E visibility $\frac{1}{4}$ mile. VDP NA when using Monett altimeter setting.

MALS
 $\text{A}_4 = \text{---}$

MISSED APPROACH: Climb to 3000 then right turn to intercept SGF R-206 to BLUE INT/SGF 21.8 DME and hold.

ATIS 135.125	SPRINGFIELD APP CON 124.95 290.5	SPRINGFIELD TOWER 119.9 257.8	GND CON 121.9 251.15	CLNC DEL 123.675
------------------------	--	---	--------------------------------	----------------------------



CATEGORY	A	B	C	D	E	REIL Rwy 32 HIRL Rwy 2-20 and 14-32
S-20	1700- $\frac{3}{4}$ 438 (500- $\frac{3}{4}$)	1700-1 $\frac{1}{4}$ 438 (500-1 $\frac{1}{4}$)	1700-1 $\frac{1}{2}$ 438 (500-1 $\frac{1}{2}$)	1700-1 $\frac{1}{2}$ 438 (500-1 $\frac{1}{2}$)	1700-1 $\frac{1}{2}$ 438 (500-1 $\frac{1}{2}$)	FAF to MAP 6.5 NM
CIRCLING	1760-1 492 (500-1)	1820-1 552 (600-1)	1820-1 $\frac{1}{2}$ 552 (600-1 $\frac{1}{2}$)	1920-2 652 (700-2)	2080-3 812 (900-3)	

SPRINGFIELD, MISSOURI
Amdt 18E 28MAY15

37°15'N-93°23'W

VOR or TACAN RWY 20

NC-3, 10 JUL 2025 to 07 AUG 2025

SPRINGFIELD, MISSOURI

AL-604 (FAA)

25219

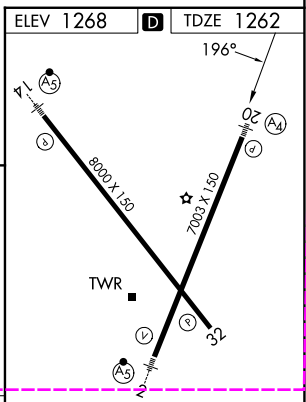
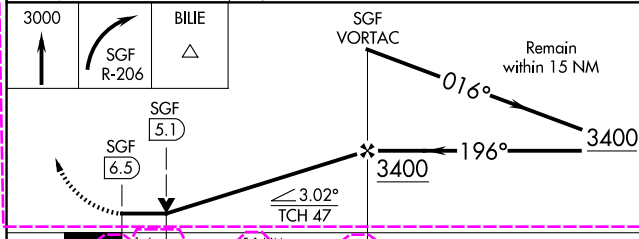
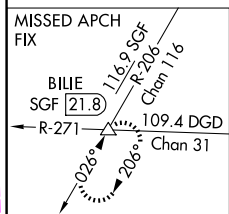
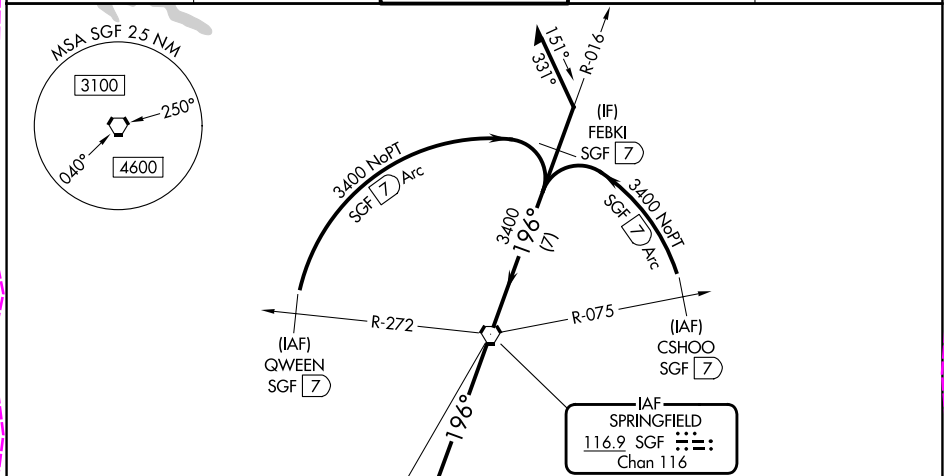
VORTAC SGF	APP CRS	Rwy Ldg	7003
116.9	196°	TDZE	1262
Chan 116		Apt Elev	1268

VOR or TACAN RWY 20

SPRINGFIELD-BRANSON NTL (SGF)

DME required.	MALS	MISSED APPROACH: Climb to 3000 then right turn to intercept SGF R-206 to BLUE INT/SGF 21.8 DME and hold.
NA Rwy 20 helicopter visibility reduction below 3/4 SM NA. For inop ALS, increase S-20 Cat E to 1 3/8 SM. VDP NA when using HFJ altimeter setting. When local altimeter setting not received, use HFJ altimeter setting: increase all MDAs 100 feet; increase S-20 visibility Cats C, D and E 1/4 SM, and Circling visibility Cat C and D 1/2 SM. For inop ALS, use HFJ altimeter setting: increase S-20 visibility Cats C, D and E to 1 3/4 SM.	(A4)	

ATIS 135.125	SPRINGFIELD APP CON 124.95 290.5	SPRINGFIELD TOWER 119.9 257.8	GND CON 121.9 251.15	CLNC DEL 123.675
-----------------	-------------------------------------	----------------------------------	-------------------------	---------------------



CATEGORY	A	B	C	D	E	REIL Rwy 32
S-20	1760-3/4 498 (500-3/4)		1760-1 1/8 498 (500-1 1/8)			HIRL Rwy 2-20 and 14-32
CIRCLING	1760-1 492 (500-1)	1820-1 552 (600-1)	1820-1 1/2 552 (600-1 1/2)	1920-2 652 (700-2)	2080-3 812 (900-3)	FAF to MAP 6.5 NM
						Knots 60 90 120 150 180
						Min:Sec 6:30 4:20 3:15 2:36 2:10

SPRINGFIELD, MISSOURI
Amdt 19 07AUG25

37°15'N-93°23'W

SPRINGFIELD-BRANSON NTL (SGF)
VOR or TACAN RWY 20

NC-3, 07 AUG 2025 to 04 SEP 2025

NC-3, 07 AUG 2025 to 04 SEP 2025