

SPRINGFIELD, MISSOURI

AL-604 (FAA)

24081

VORTAC SGF	APP CRS	Rwy Idg	7003
116.9	016°	TDZE	1265
Chan 116		Apt Elev	1268

## VOR/DME or TACAN RWY 2

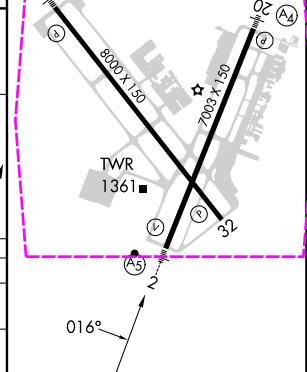
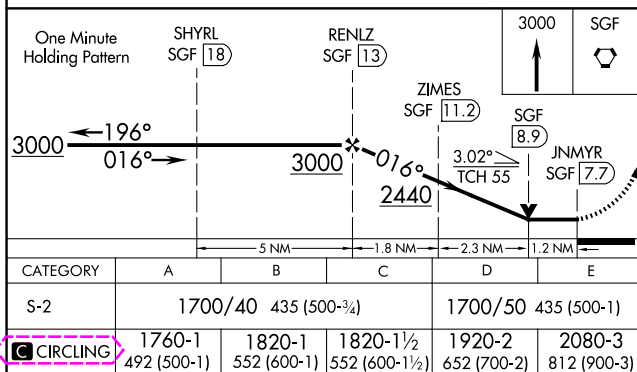
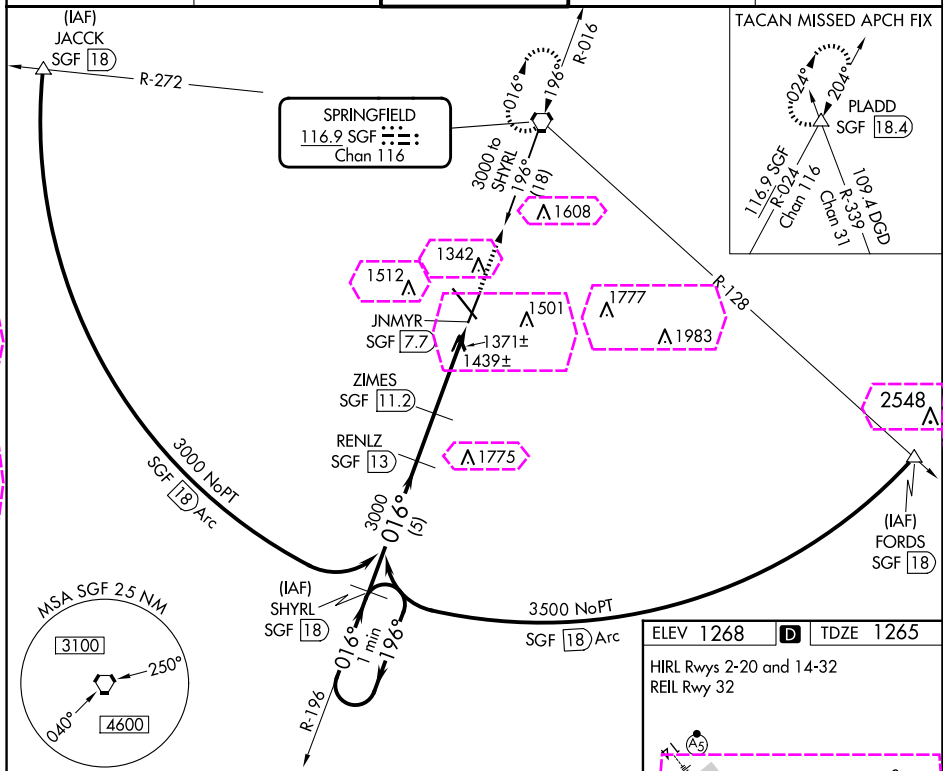
SPRINGFIELD-BRANSON NTL (SGF')

For inoperative MALSR, increase S-2 Cat A and B visibility to RVR 5000 and Cat E to 1½. When local altimeter setting not received, use Monett altimeter setting and increase all MDA 100 feet, increase Circling Cat C to 1¾ mile. VDP NA when using Monett altimeter setting.



MISSED APPROACH: Climb to 3000 direct SGF VORTAC and hold (TACAN Aircraft continue on SGF R-024 to PLADD INT/SGF 18.4 DME and hold, north, right turns, 204° inbound).

ATIS 135.125	SPRINGFIELD APP CON 124.95 290.5	SPRINGFIELD TOWER 119.9 257.8	GND CON 121.9 251.15	CLNC DEL 123.675
-----------------	-------------------------------------	----------------------------------	-------------------------	---------------------



SPRINGFIELD, MISSOURI  
Orig-D 28MAY15

37° 15' N 93° 23' W

SPRINGFIELD-BRANSON NTL (SGF')  
VOR/DME or TACAN RWY 2

SPRINGFIELD, MISSOURI

AL-604 (FAA)

25219

VORTAC SGF <b>116.9</b> Chan <b>116</b>	APP CRS <b>016°</b>	Rwy Ldg TDZE Apt Elev	<b>7003</b> <b>1265</b> <b>1268</b>
---	------------------------	-----------------------------	---

# VOR/DME or TACAN RWY 2

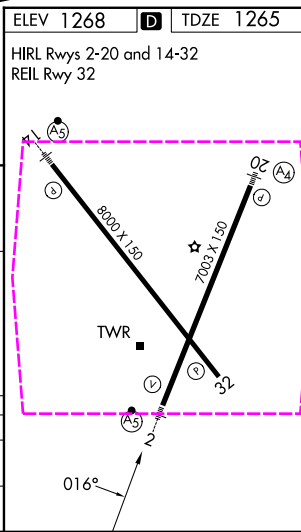
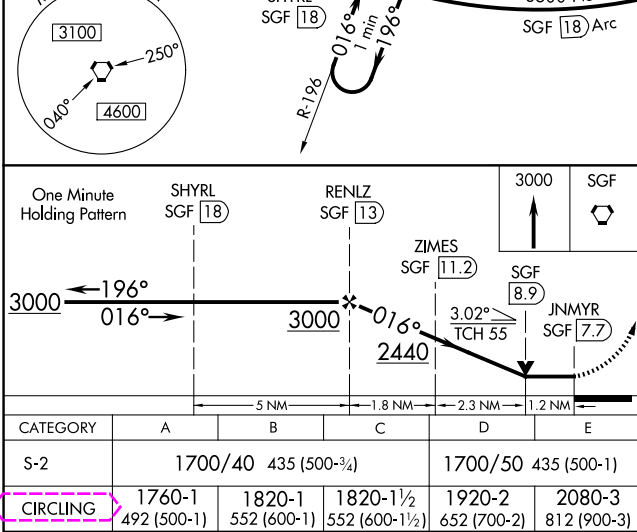
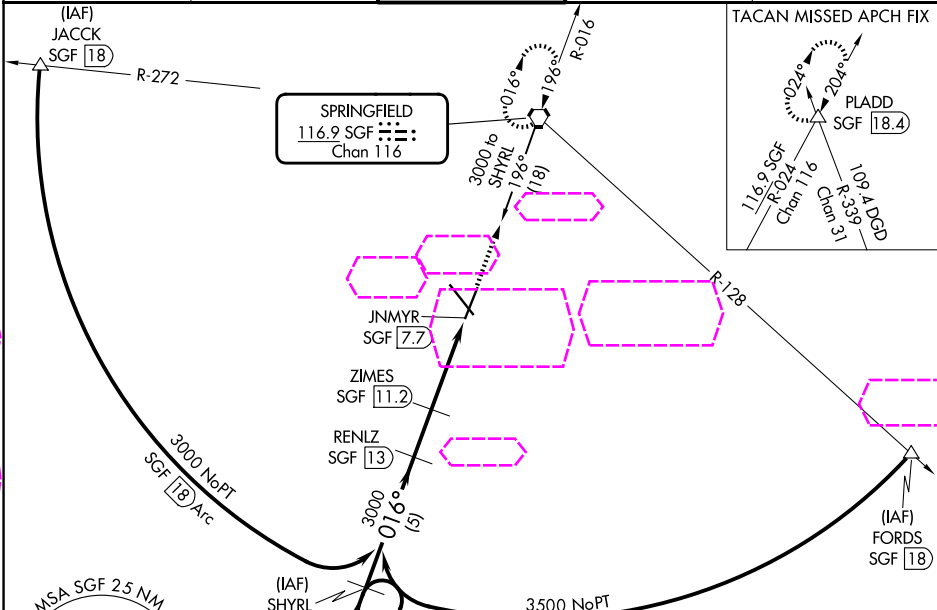
SPRINGFIELD-BRANSON NTL (SGF')

For inoperative MALSR, increase S-2 Cat A and B visibility to RVR 5000 and Cat E to 1½. When local altimeter setting not received, use Monett altimeter setting and increase all MDA 100 feet, increase Circling Cat C to 1¾ mile. VDP NA when using Monett altimeter setting.



MISSED APPROACH: Climb to 3000 direct SGF VORTAC and hold (TACAN Aircraft continue on SGF R-024 to PLADD INT/SGF 18.4 DME and hold, north, right turns, 204° inbound).

ATIS <b>135.125</b>	SPRINGFIELD APP CON <b>124.95 290.5</b>	SPRINGFIELD TOWER <b>119.9 257.8</b>	GND CON <b>121.9 251.15</b>	CLNC DEL <b>123.675</b>
------------------------	--	---	--------------------------------	----------------------------



SPRINGFIELD, MISSOURI  
Orig-D 28MAY15

37°15'N-93°23'W

SPRINGFIELD-BRANSON NTL (SGF')  
VOR/DME or TACAN RWY 2

NC-3, 07 AUG 2025 to 04 SEP 2025

NC-3, 07 AUG 2025 to 04 SEP 2025