

WAAS CH 72933 W32A	APP CRS 319°	Rwy Idg TDZE 1268 Apt Elev 1268
--	------------------------	---

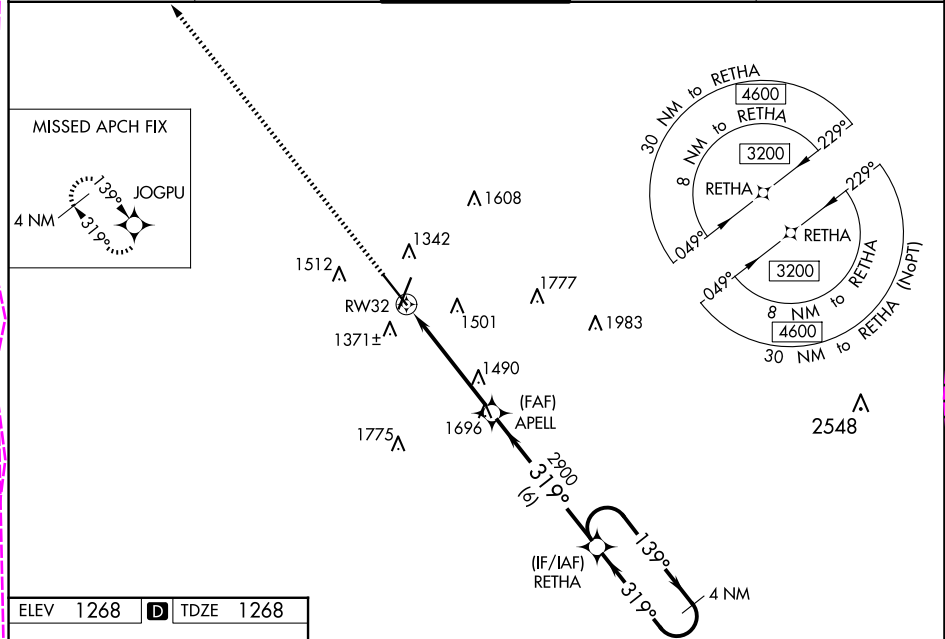
RNAV (GPS) RWY 32

SPRINGFIELD-BRANSON NTL (SGT)

⚠ Baro-VNAV and VDP NA when using Monnett altimeter setting. For uncompensated Baro-VNAV systems, LNAV/VNAV NA below -16°C (4°F) or above 54°C (130°F). When local altimeter setting not received, use Monnett altimeter setting and increase all DA 90 feet and all MDA 100 feet; increase LPV all Cts visibility ⅓ mile, LNAV/VNAV all Cts ⅓ mile, LNAV Cts C and D ¼ mile and Circling Cat C ¼ mile and Cat D ½ mile. DME/DME RNP- 0.3 NA.

MISSED APPROACH:
Climb to 3000 direct
JOGPU and hold.

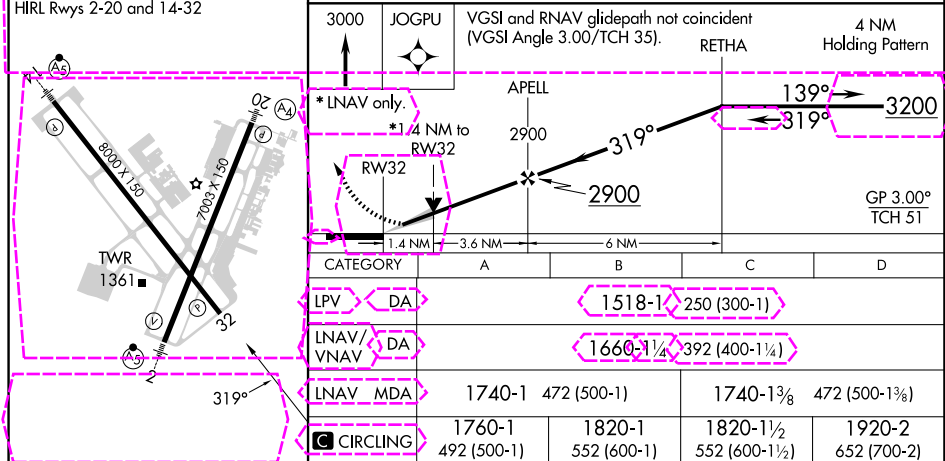
ATIS 135.125	SPRINGFIELD APP CON 124.95 290.5	SPRINGFIELD TOWER 119.9 257.8	GND CON 121.9 251.15	CLNC DEL 123.675
------------------------	--	---	--------------------------------	----------------------------



ELEV 1268	D	TDZE 1268
-----------	----------	-----------

REIL Rwy 32

HIRL Rws 2-20 and 14-32



SPRINGFIELD, MISSOURI

AL-604 (FAA)

25219

WAAS CH 72933 W32A	APP CRS 319°	Rwy Ldg TDZE 1268 Apt Elev 1268
--	------------------------	---

RNAV (GPS) RWY 32

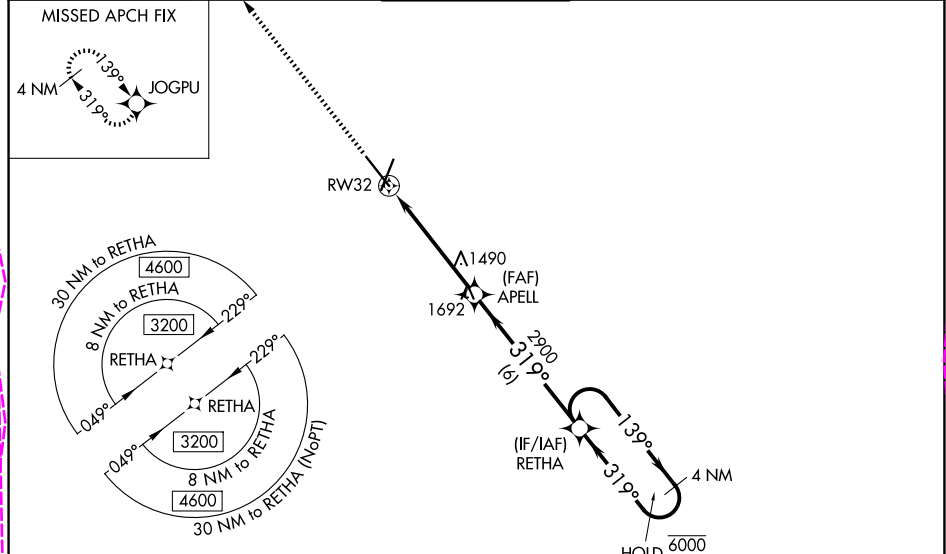
SPRINGFIELD-BRANSON NTL (SGT')

RNP APCH - GPS.

⚠ For uncompensated Baro-VNAV systems, LNAV/VNAV NA below -16°C or above 54°C. Baro-VNAV and VDP NA when using HFJ altimeter setting. When local altimeter setting not received, use HFJ altimeter setting and increase LPV DA to 1608 feet and all visibilities $\frac{1}{4}$ SM. Increase LNAV/VNAV DA to 1820 feet and all visibilities $\frac{1}{4}$ SM. Increase all MDAs 100 feet and LNAV visibility Cat C and D $\frac{1}{4}$ SM, and Circling visibility Cat C and D $\frac{1}{2}$ SM.

MISSED APPROACH: Climb to 3000 direct JOGPU and hold.

ATIS 135.125	SPRINGFIELD APP CON 124.95 290.5	SPRINGFIELD TOWER 119.9 257.8	GND CON 121.9 251.15	CLNC DEL 123.675
------------------------	--	---	--------------------------------	----------------------------



ELEV 1268	D	TDZE 1268
-----------	----------	-----------

3000 JOGPU

VGSI and RNAV glidepath not coincident (VGSI Angle 3.00/TCH 35).

RETHA 4 NM Holding Pattern

GP 3.00° TCH 51

CATEGORY	A	B	C	D
LPV DA		1518- $\frac{3}{4}$	250 (300- $\frac{3}{4}$)	
LNAV/VNAV DA		1730-1 $\frac{1}{2}$	462 (500-1 $\frac{1}{2}$)	
LNAV MDA	1740-1	472 (500-1)	1740-1 $\frac{3}{8}$	472 (500-1 $\frac{3}{8}$)
CIRCLING	1760-1	1820-1	1820-1 $\frac{1}{2}$	1920-2
	492 (500-1)	552 (600-1)	552 (600-1 $\frac{1}{2}$)	652 (700-2)

SPRINGFIELD, MISSOURI
Amdt 2C, 07AUG25

37°15'N-93°23'W

SPRINGFIELD-BRANSON NTL (SGT')
RNAV (GPS) RWY 32

NC-3, 07 AUG 2025 to 04 SEP 2025

NC-3, 07 AUG 2025 to 04 SEP 2025