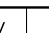
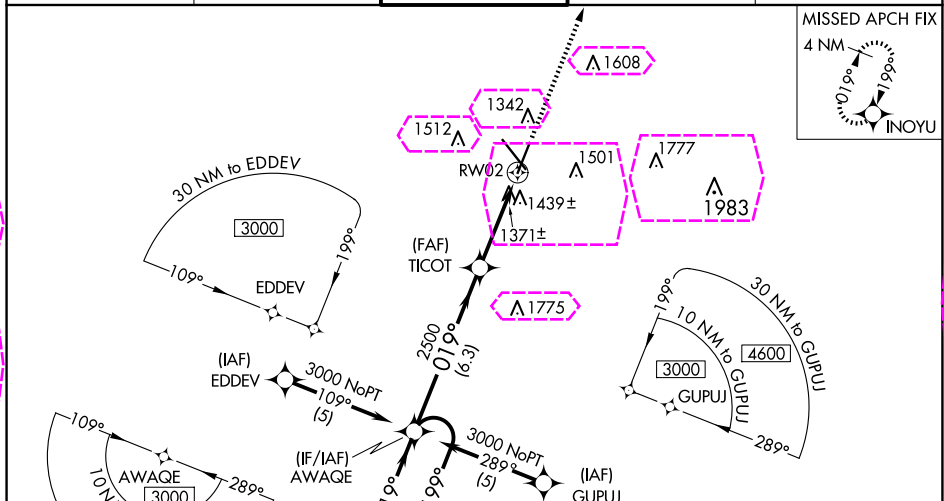
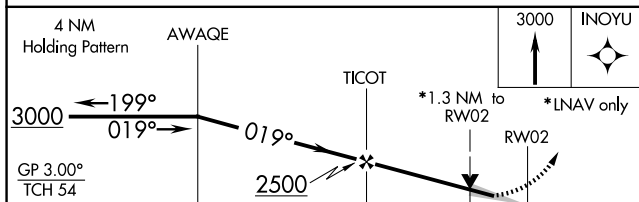
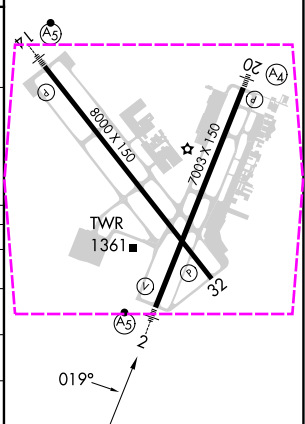


RNAV (GPS) RWY 2
SPRINGFIELD-BRANSON NTL (SGF)

<p>V DME/DME RNP -0.3 NA. For uncompensated Baro-VNAV systems, LNAV/VNAV NA below -17°C (2°F) or above 45°C (113°F). Baro-VNAV and VDP NA when using Monett altimeter setting. For inoperative MALSR, increase LNAV Cat A and B visibility to RVR 5000. When local altimeter setting not received, use Monett altimeter setting and increase all DAs 90 feet and all MDAs 100 feet, increase LPV visibility all Cats to RVR 5000, LNAV/VNAV visibility all Cats to 1½ miles, LNAV visibility Cat C to RVR 5000 and Cat D to RVR 6000, and increase visibility Circling Cat C to 1¾ miles, and Cat D to 2 miles. For inoperative MALSR, when using Monett altimeter setting, increase LPV visibility all Cats to 1½, LNAV Cat A and B visibility to RVR 5000.</p>	<p>MALSR</p> 	<p>MISSED APPROACH: Climb to 3000 direct INOYU and hold.</p>
---	--	--

REIL Rwy 32
HIRL Rwy 2-20 and 14-32

		6.3 NM		2.4 NM		1.3 NM	
CATEGORY	A	B	C	D			
LPV DA	1590/40 325 (400-¾)						
LNAV/ VNAV DA	1754/60 489 (500-1¼)						
LNAV MDA	1720/40 455 (500-¾)						1720/50 455 (500-1)
C CIRCLING	1760-1 492 (500-1)	1820-1 552 (600-1)	1820-1½ 552 (600-1½)	1920-2 652 (700-2)			

SPRINGFIELD-BRANSON NTL (SGF)
RNAV (GPS) RWY 2

37° 15' N-93° 23' W

NC-3, 10 JUL 2025 to 07 AUG 2025

SPRINGFIELD, MISSOURI

AL-604 (FAA)

25219

WAAS CH 86214 W02A	APP CRS 019°	Rwy Ldg 7003 TDZE 1265 Apt Elev 1268
--	------------------------	---

RNAV (GPS) RWY 2

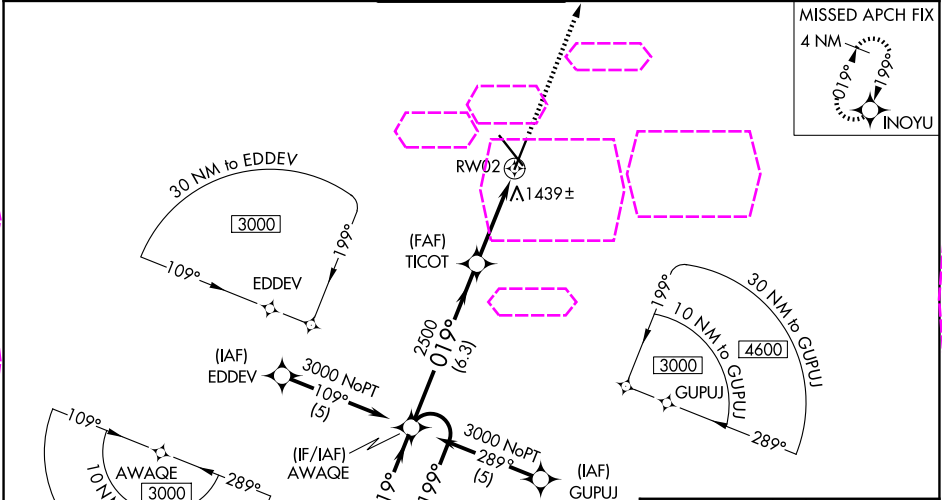
SPRINGFIELD-BRANSON NTL (SGF)

⚠ DME/DME RNP -0.3 NA. For uncompensated Baro-VNAV systems, LNAV/VNAV NA below -17°C (2°F) or above 45°C (113°F).
Baro-VNAV and VDP NA when using Monett altimeter setting.
For inoperative MALS, increase LNAV Cat A and B visibility to RVR 5000.
When local altimeter setting not received, use Monett altimeter setting and increase all DAs 90 feet and all MDAs 100 feet, increase LPV visibility all Cats to RVR 5000, LNAV/VNAV visibility all Cats to 1½ miles, LNAV visibility Cat C to RVR 5000 and Cat D to RVR 6000, and increase visibility Circling Cat C to 1¾ miles, and Cat D to 2 miles.
For inoperative MALS, when using Monett altimeter setting, increase LPV visibility all Cats to 1½, LNAV Cat A and B visibility to RVR 5000.

MALS

MISSED APPROACH: Climb to 3000 direct INOYU and hold.

ATIS 135.125	SPRINGFIELD APP CON 124.95 290.5	SPRINGFIELD TOWER 119.9 257.8	GND CON 121.9 251.15	CLNC DEL 123.675
------------------------	--	---	--------------------------------	----------------------------



ELEV 1268	TDZE 1265
REIL Rwy 32 HIRL Rwys 2-20 and 14-32	

4 NM Holding Pattern

AWAQ

TICOT

3000

199°

019°

2500

6.3 NM

2.4 NM

1.3 NM

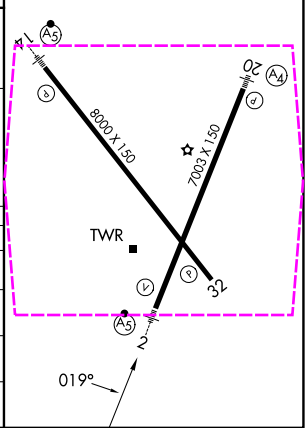
GP 3.00° TCH 54

*1.3 NM to RW02

*LNAV only

RW02

CATEGORY	A	B	C	D
LPV DA	1590/40 325 (400-¾)			
LNAV/ VNAV DA	1754/60 489 (500-1¼)			
LNAV MDA	1720/40 455 (500-¾)			1720/50 455 (500-1)
CIRCLING	1760-1 492 (500-1)	1820-1 552 (600-1)	1820-1½ 552 (600-1½)	1920-2 652 (700-2)



SPRINGFIELD, MISSOURI
Amdt 2B 28 MAY15

37°15'N-93°23'W

SPRINGFIELD-BRANSON NTL (SGF)
RNAV (GPS) RWY 2

NC-3, 07 AUG 2025 to 04 SEP 2025

NC-3, 07 AUG 2025 to 04 SEP 2025