

SPRINGFIELD, MISSOURI

AL-604 (FAA)

24081

WAAS CH 65613 W20A	APP CRS 199°	Rwy Idg 7003 TDZE 1262 Apt Elev 1268
--	------------------------	---

RNAV (GPS) RWY 20

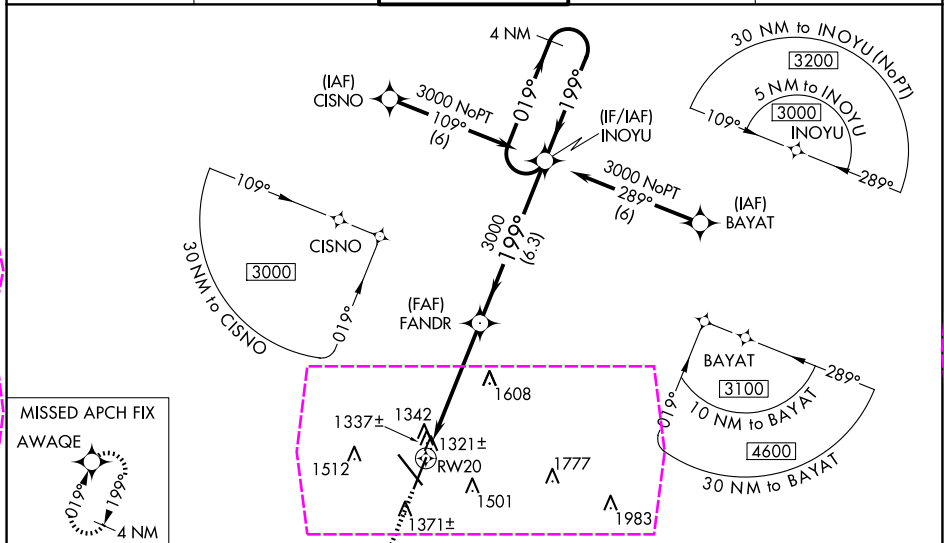
SPRINGFIELD-BRANSON NTL (SGT)

⚠ DME/DME RNP-0.3 NA. Visibility reduction by helicopters NA.
For uncompensated Baro-VNAV systems, LNAV/VNAV NA below -17°C (2°F) or above 46°C (114°F).
Baro-VNAV and VDP NA when using Monett altimeter setting.
Inoperative table does not apply to LNAV/VNAV all Cats and LNAV Cat C.
When local altimeter setting not received, use Monett altimeter setting and increase all DAs 90 feet and increase all MDAs 100 feet, increase LPV visibility all Cats ¼ mile, increase LNAV/VNAV all Cats ¼ mile, increase LNAV Cats C and D ½ mile, increase Circling Cat C ¼ mile.

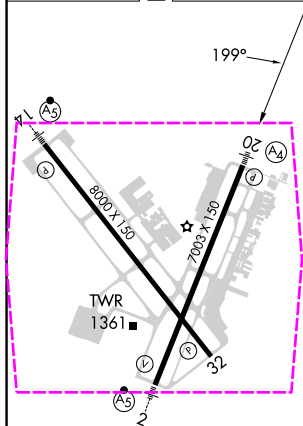
MALS
⊙ =

MISSED APPROACH: Climb to 3000 direct AWAQE and hold.

ATIS 135.125	SPRINGFIELD APP CON 124.95 290.5	SPRINGFIELD TOWER 119.9 257.8	GND CON 121.9 251.15	CLNC DEL 123.675
------------------------	--	---	--------------------------------	----------------------------



ELEV 1268	D	TDZE 1262
-----------	----------	-----------



REIL Rwy 32
HIRL Rwy 2-20 and 14-32

3000	AWAQE	FANDR	INOYU	4 NM Holding Pattern
*LNAV only	*1.5 NM to RW20			
1.5 NM	3.7 NM	6.3 NM		
CATEGORY	A	B	C	D
LPV DA	1531-1	269 (300-1)		
LNAV/VNAV DA	1656-1½	394 (400-1½)		
LNAV MDA	1780-¾ 518 (600-¾)	1780-1½ 518 (600-1½)	1780-1¾ 518 (600-1¾)	
C CIRCLING	1780-1 512 (600-1)	1820-1 552 (600-1)	1820-1½ 552 (600-1½)	1920-2 652 (700-2)

SPRINGFIELD, MISSOURI
Amdt 2B 28MAY15

37°15'N-93°23'W

SPRINGFIELD-BRANSON NTL (SGT)
RNAV (GPS) RWY 20

SPRINGFIELD, MISSOURI

AL-604 (FAA)

25219

WAAS CH 65613 W20A	APP CRS 199°	Rwy Ldg 7003 TDZE 1262 Apt Elev 1268
--	------------------------	---

RNAV (GPS) RWY 20

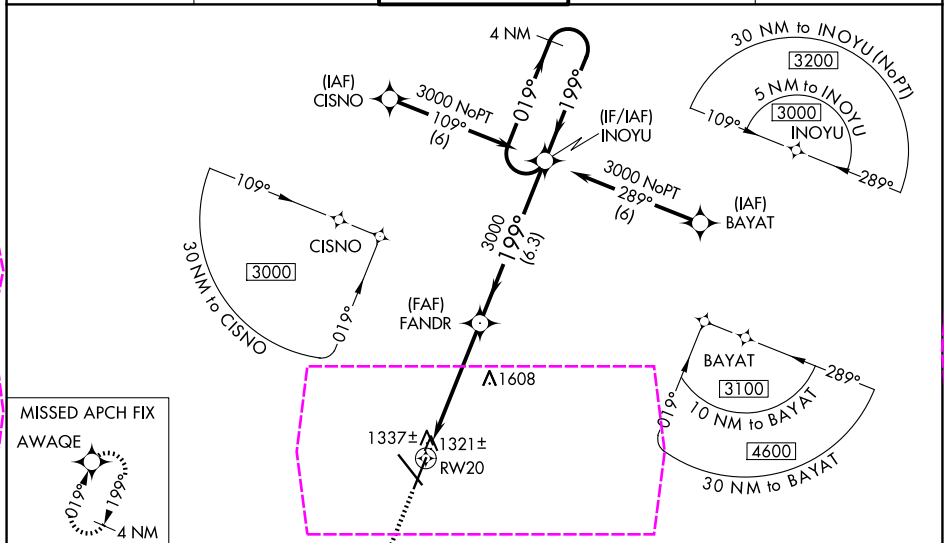
SPRINGFIELD-BRANSON NTL (SGT)

⚠ DME/DME RNP-0.3 NA. Visibility reduction by helicopters NA.
For uncompensated Baro-VNAV systems, LNAV/VNAV NA below -17°C (2°F) or above 46°C (114°F).
Baro-VNAV and VDP NA when using Monnett altimeter setting.
Inoperative table does not apply to LNAV/VNAV all Cats and LNAV Cat C.
When local altimeter setting not received, use Monnett altimeter setting and increase all DAs 90 feet and increase all MDAs 100 feet, increase LPV visibility all Cats ¼ mile, increase LNAV/VNAV all Cats ¼ mile, increase LNAV Cats C and D ½ mile, increase Circling Cat C ¼ mile.

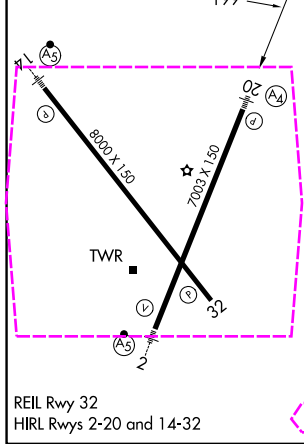
MALS
④ =

MISSED APPROACH: Climb to 3000 direct AWAQE and hold.

ATIS 135.125	SPRINGFIELD APP CON 124.95 290.5	SPRINGFIELD TOWER 119.9 257.8	GND CON 121.9 251.15	CLNC DEL 123.675
------------------------	--	---	--------------------------------	----------------------------



ELEV 1268	D	TDZE 1262
-----------	----------	-----------



3000	AWAQE	FANDR	INOYU	4 NM Holding Pattern
*LNAV only	*1.5 NM to RW20	199°	019°	3000
1.5 NM	3.7 NM	6.3 NM	GP 3.00° TCH 47	
CATEGORY	A	B	C	D
LPV DA	1531-1 269 (300-1)			
LNAV/VNAV DA	1656-1½ 394 (400-1½)			
LNAV MDA	1780-¾ 518 (600-¾)	1780-1½ 518 (600-1½)	1780-1¾ 518 (600-1¾)	1780-1¾ 518 (600-1¾)
CIRCLING	1780-1 512 (600-1)	1820-1 552 (600-1)	1820-1½ 552 (600-1½)	1920-2 652 (700-2)

SPRINGFIELD, MISSOURI
Amdt 2B 28MAY15

37°15'N-93°23'W

SPRINGFIELD-BRANSON NTL (SGT)
RNAV (GPS) RWY 20

NC-3, 07 AUG 2025 to 04 SEP 2025

NC-3, 07 AUG 2025 to 04 SEP 2025