

LOC/DME I-SGF <b>109.9</b> Chan <b>36</b>	APP CRS <b>019°</b>	Rwy Idg TDZE Apt Elev	<b>7003</b> <b>1265</b> <b>1268</b>
---	------------------------	-----------------------------	---

ILS or LOC RWY 2  
SPRINGFIELD-BRANSON NTL (SGF)

**T**  
**A** DME or RADAR required. For inop MALSR, increase S-ILS 2 Cat E visibility to RVR 4000, and S-LOC 2 Cat E visibility to 1¼ mile.  
#RVR 1800 authorized with use of FD or AP or HUD to DA.

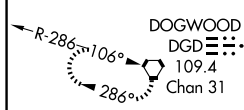
MALSR



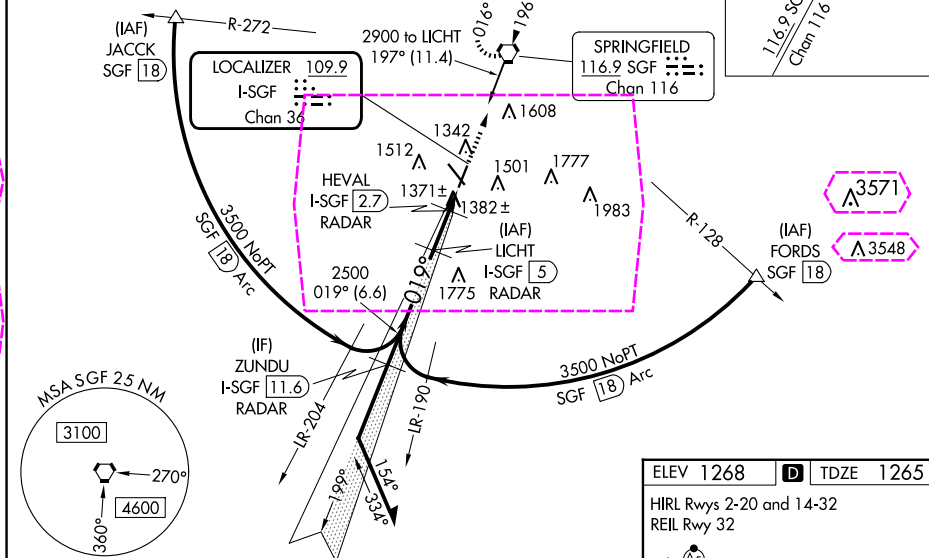
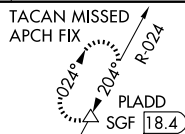
**MISSED APPROACH:** Climb to 3000 direct SGF VORTAC and hold (TACAN aircraft continue on SGF VORTAC R-024 to PLADD/SGF 18.4 DME and hold northeast, right turn, 204° inbound).

ATIS 135.125	SPRINGFIELD APP CON 124.95 290.5	SPRINGFIELD TOWER 119.9 257.8	GND CON 121.9 251.15	CLNC DEL 123.675
-----------------	-------------------------------------	----------------------------------	-------------------------	---------------------

ALTERNATE MISSED APCH FIX

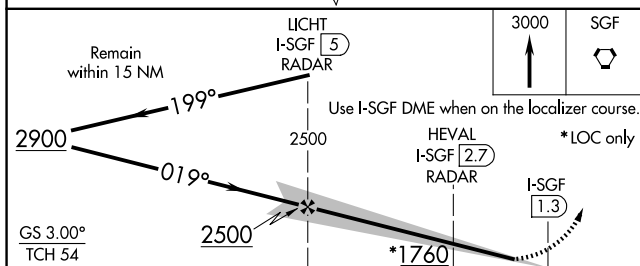


## DME or RADAR REQUIRED

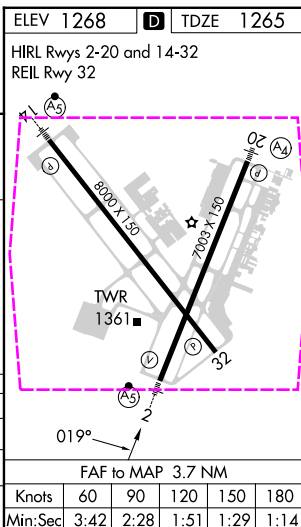


NC-3, 10 JUL 2025 to 07 AUG 2025

NC-3, 10 JUL 2025 to 07 AUG 2025



				2.3 NM	1.4 NM	
CATEGORY	A	B	C	D	E	
S-ILS 2 #	1465/24 200 (200-1/2)					
S-LOC 2	1700/24	435 (500-1/2)	1700/40 435 (500-3/4)			
<b>CIRCLING</b>	1760-1 492 (500-1)	1820-1 552 (600-1)	1820-1 1/2 552 (600-1 1/2)	1920-2 652 (700-2)	2080-3 812 (900-3)	



SPRINGFIELD, MISSOURI

Amdt 19 10DEC15

SPRINGFIELD-BRANSON NTL (SGF)

ILS or LOC RWY 2

37°15'N-93°23'W

SPRINGFIELD, MISSOURI

AL-604 (FAA)

25219

LOC/DME I-SGF <b>109.9</b> Chan <b>36</b>	APP CRS <b>019°</b>	Rwy Ldg TDZE Apt Elev	<b>7003</b> <b>1265</b> <b>1268</b>
---	------------------------	-----------------------------	---

## ILS or LOC RWY 2

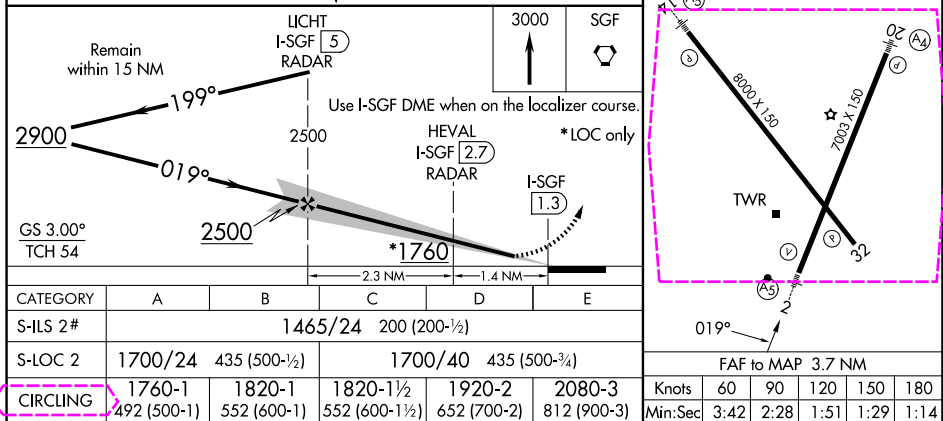
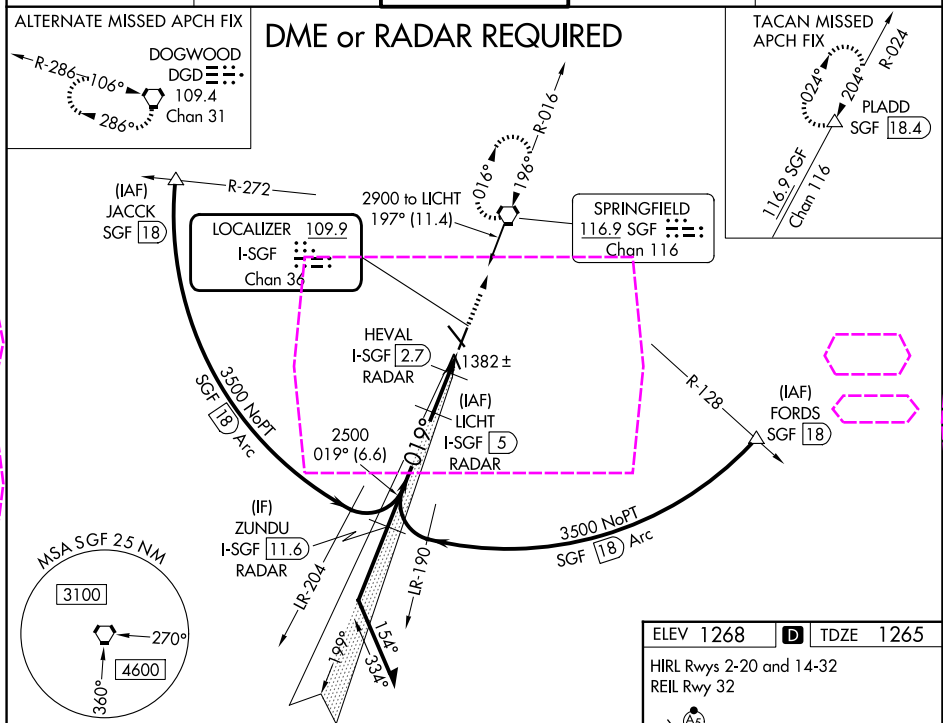
SPRINGFIELD-BRANSON NTL (SGF)

**⚠** DME or RADAR required. For inop MALSR, increase S-ILS 2 Cat E visibility to RVR 4000, and S-LOC 2 Cat E visibility to 1¼ mile.  
#RVR 1800 authorized with use of FD or AP or HUD to DA.

MALSR

MISSED APPROACH: Climb to 3000 direct SGF VORTAC and hold (TACAN aircraft continue on SGF VORTAC R-024 to PLADD/SGF 18.4 DME and hold northeast, right turn, 204° inbound).

ATIS <b>135.125</b>	SPRINGFIELD APP CON <b>124.95 290.5</b>	SPRINGFIELD TOWER <b>119.9 257.8</b>	GND CON <b>121.9 251.15</b>	CLNC DEL <b>123.675</b>
------------------------	--	---	--------------------------------	----------------------------



SPRINGFIELD, MISSOURI  
Amdt 19 10DEC15

37°15'N-93°23'W

SPRINGFIELD-BRANSON NTL (SGF)  
ILS or LOC RWY 2