

LOC/DME I-GWA 109.7 Chan 34	APP CRS 139°	Rwy Idg 8000 TDZE 1260 Apt Elev 1268
---	------------------------	---

ILS or LOC RWY 14
SPRINGFIELD-BRANSON NTL (SGF)

T
A Helicopter visibility reduction below $\frac{3}{4}$ SM NA.
Inoperative table does not apply to S-115 14.
For inoperative MALS R, increase S-LOC 14 all Cats
visibility to 1.

MALSR

MISSED APPROACH: Climb to 1800 then climbing left turn to 2900 to SGF VORTAC and hold.
(TACAN aircraft continue on SGF VORTAC R-024 to PLADD INT and hold NE, RT, 204° inbound).

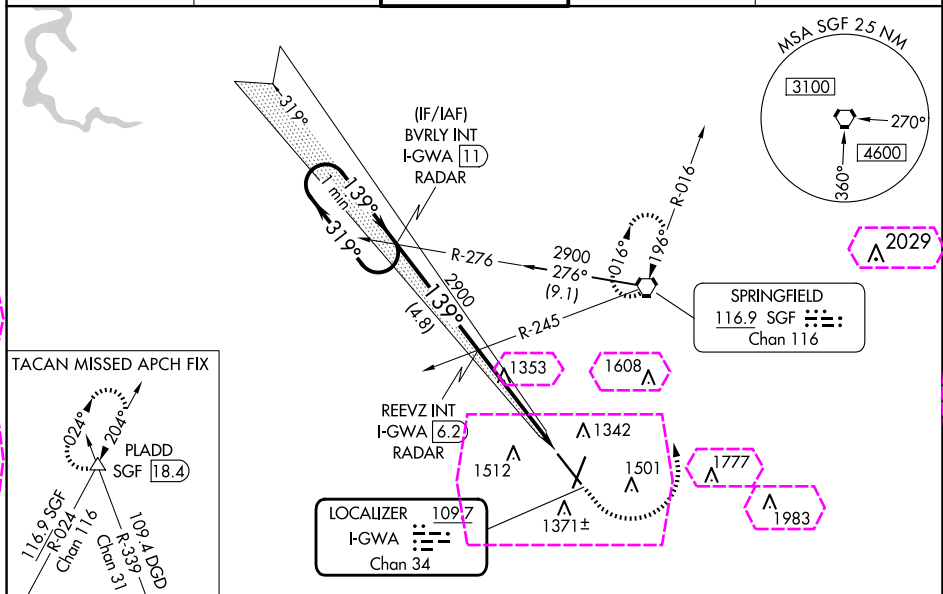
ATIS
135.125

SPRINGFIELD APP CON
124.95 290.5

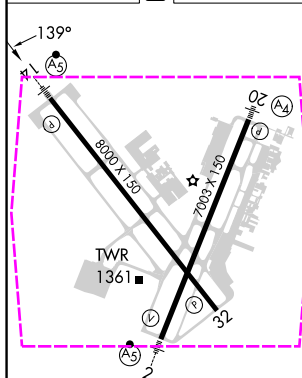
SPRINGFIELD TOWER
119.9 257.8

GND CON
121.9 251.15

CLNC DEL
123.675



ELEV 1268	D	TDZE 1260
-----------	----------	-----------



REIL Rwy 32
HIRL Rwy 2-20 and 14-32




FAF to MAP 4.7 NM

Knots	60	90	120	150	180
Min:Sec	4:42	3:08	2:21	1:53	1:34

One Minute Holding Pattern

BVRLY INT
I-GWA 11
RADAR

REEVZ INT
I-GWA 6.2
RADAR

1800 	2900 	SGF 
*I-GWA	*LOC only	

TCH 56

4.8 NM


3.8 NM

1 NM

CATEGORY	A	B	C	D
----------	---	---	---	---

S-ILS 14	1517- $\frac{3}{4}$ 257 (300- $\frac{3}{4}$)
----------	---

S-LOC 14	1620- ³ / ₄ 360 (400- ³ / ₄)
----------	---

 CIRCLING	1760-1 492 (500-1)	1820-1 552 (600-1)	1820-1½ 552 (600-1½)	1920-2 652 (700-2)
--	-----------------------	-----------------------	-------------------------	-----------------------

SPRINGFIELD, MISSOURI

Orig-C 28MAY15

SPRINGFIELD-BRANSON NTL (SGF)
ILS or LOC RWY 14

37° 15' N-93° 23' W

NC-3, 10 JUL 2025 to 07 AUG 2025

NC-3, 10 JUL 2025 to 07 AUG 2025

SPRINGFIELD, MISSOURI

AL-604 (FAA)

25219


LOC/DME I-GWA 109.7 Chan 34	APP CRS 139°	Rwy Ldg TDZE Apt Elev	8000 1260 1268
---	------------------------	-----------------------------	---

ILS or LOC RWY 14

SPRINGFIELD-BRANSON NTL (SGF)

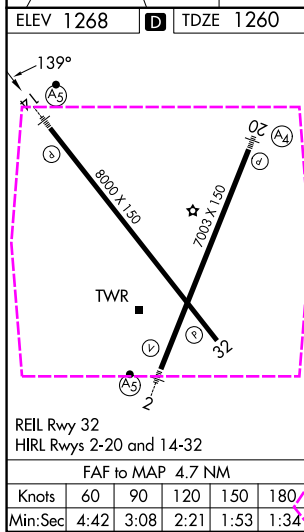
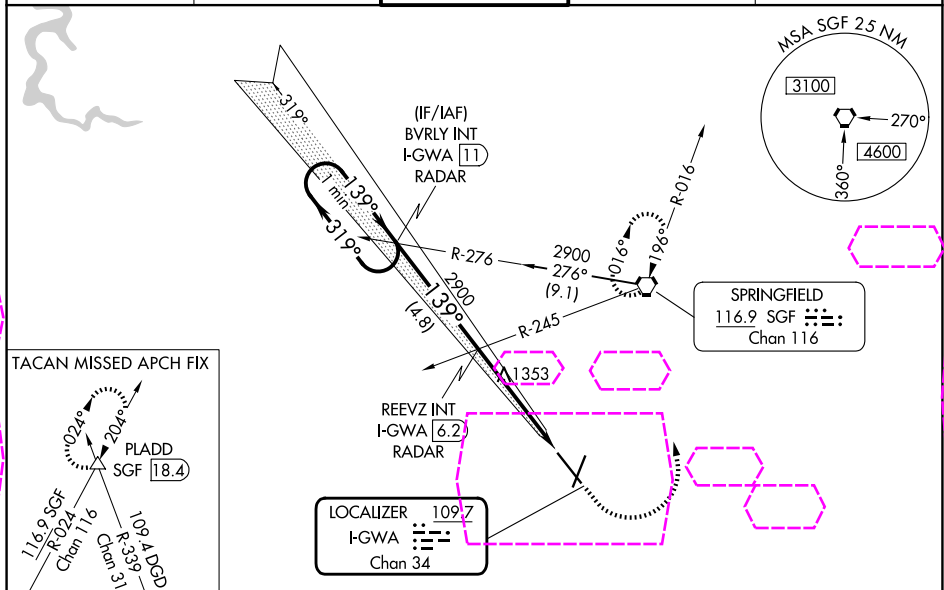
⚠ Helicopter visibility reduction below $\frac{3}{4}$ SM NA.
Inoperative table does not apply to S-ILS 14.
For inoperative MALS, increase S-LOC 14 all Cats visibility to 1.

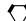
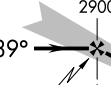
MALS



MISSED APPROACH: Climb to 1800 then climbing left turn to 2900 to SGF VORTAC and hold.
(TACAN aircraft continue on SGF VORTAC R-024 to PLADD INT and hold NE, RT, 204° inbound).

ATIS 135.125	SPRINGFIELD APP CON 124.95 290.5	SPRINGFIELD TOWER 119.9 257.8	GND CON 121.9 251.15	CLNC DEL 123.675
------------------------	--	---	--------------------------------	----------------------------



One Minute Holding Pattern		BVR/LY INT I-GWA [11] RADAR	REEVZ INT I-GWA [6.2] RADAR	<div><div>1800</div><div>↑</div></div>	<div><div>2900</div><div>↶</div></div>	<div><div>SGF</div><div></div></div>
<div><div>2900</div><div>← 319°</div><div>139° →</div></div>		<div><div>2900</div><div>139°</div><div></div><div>2900</div></div>		<div><div>*I-GWA</div><div>[2.4]</div></div>	<div><div>*LOC only</div><div>I-GWA</div><div>[1.5]</div></div>	
GS 3.00° TCH 56		4.8 NM		3.8 NM	1 NM	
CATEGORY	A	B	C	D		
S-ILS 14	1517-¾ 257 (300-¾)					
S-LOC 14	1620-¾ 360 (400-¾)					
CIRCLING	1760-1 492 (500-1)	1820-1 552 (600-1)	1820-1½ 552 (600-1½)	1920-2 652 (700-2)		

SPRINGFIELD, MISSOURI
Orig-C 28MAY15

SPRINGFIELD-BRANSON NTL (SGF)
ILS or LOC RWY 14

37°15'N-93°23'W

NC-3, 07 AUG 2025 to 04 SEP 2025

NC-3, 07 AUG 2025 to 04 SEP 2025