

PEORIA, ILLINOIS

AL-597 (FAA)

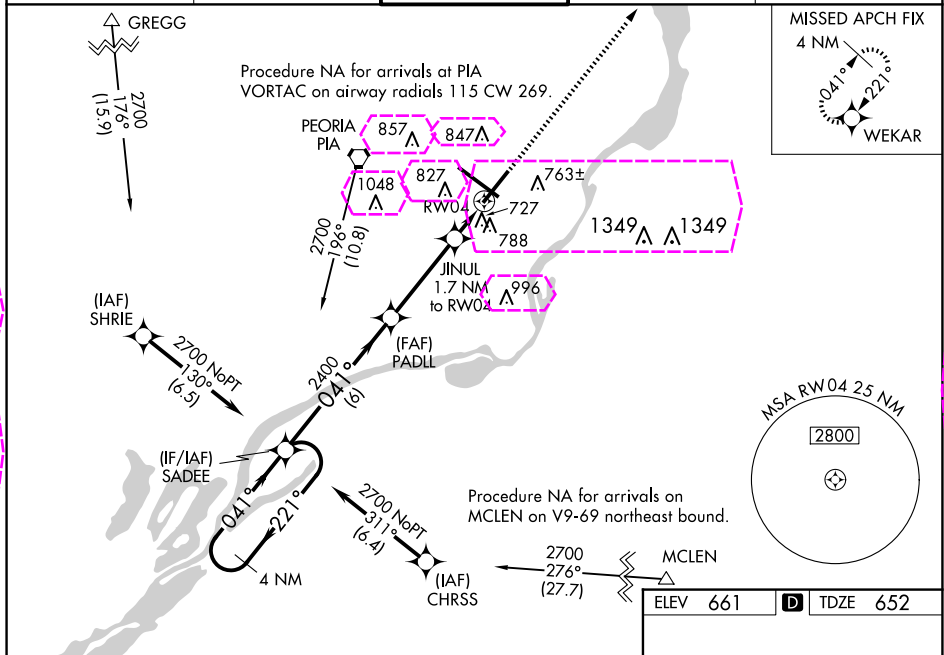
24361

WAAS CH <b>56210</b> <b>W04A</b>	APP CRS <b>041°</b>	Rwy Idg TDZE <b>652</b> Apt Elev <b>661</b>	<b>7826</b>
--	------------------------	---	-------------

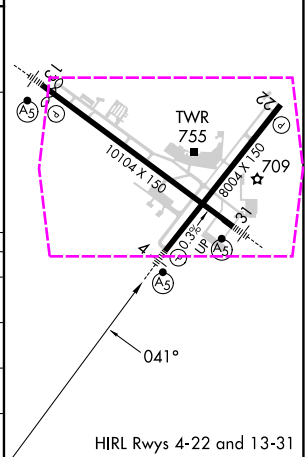
# RNAV (GPS) RWY 4

GENERAL DOWNING - PEORIA INTL (PIA)

RNP APCH.		MALSR		MISSED APPROACH: Climb to 2300 direct WEKAR and hold.
⚠ For uncompensated Baro-VNAV systems, LNAV/VNAV NA below -19°C or above 54°C. VDP and Baro-VNAV NA with Logan County altimeter setting. When local altimeter setting not received, use Logan County altimeter setting and increase all DA 89 feet and all MDA 100 feet, increase LNAV/VNAV all Cats visibility 1/8 mile, LNAV Cat C and D visibility 1/4 mile, and Circling Cat C 1/4 mile and Cat D 1/2 mile. For inoperative MALSR using Logan County altimeter setting, increase LPV all Cats visibility to 1 mile. For inop ALS, increase LNAV Cat C/D visibility to 1 SM. Circling Rwy 13, 31 NA at night.				
ATIS <b>126.1 282.2</b>	SAINT LOUIS APP CON <b>125.8 269.2</b>	PEORIA TOWER <b>124.0 353.85</b>	GND CON <b>121.85 348.6</b>	CLNC DEL <b>124.675 317.55</b>



4 NM Holding Pattern		SADEE		PADLL		JINUL 1.7 NM to RW04		*LNAV only	
2700		221°		041°		2400		*1220	
GP 3.00°		TCH 55		6 NM		3.7 NM		0.8	
CATEGORY		A		B		C		D	
LPV DA				857-1/2		205 (200-1/2)			
LNAV/VNAV DA				905-1/2		253 (300-1/2)			
LNAV MDA		1000-1/2		348 (400-1/2)		1000-5/8		348 (400-5/8)	
CIRCLING		1160-1		499 (500-1)		1180-1 1/2		1400-2 1/4	
						519 (600-1/2)		739 (800-2/4)	



PEORIA, ILLINOIS

Amdt 2A 26MAR20

GENERAL DOWNING - PEORIA INTL (PIA)

40°40'N-89°42'W

# RNAV (GPS) RWY 4

PEORIA, ILLINOIS

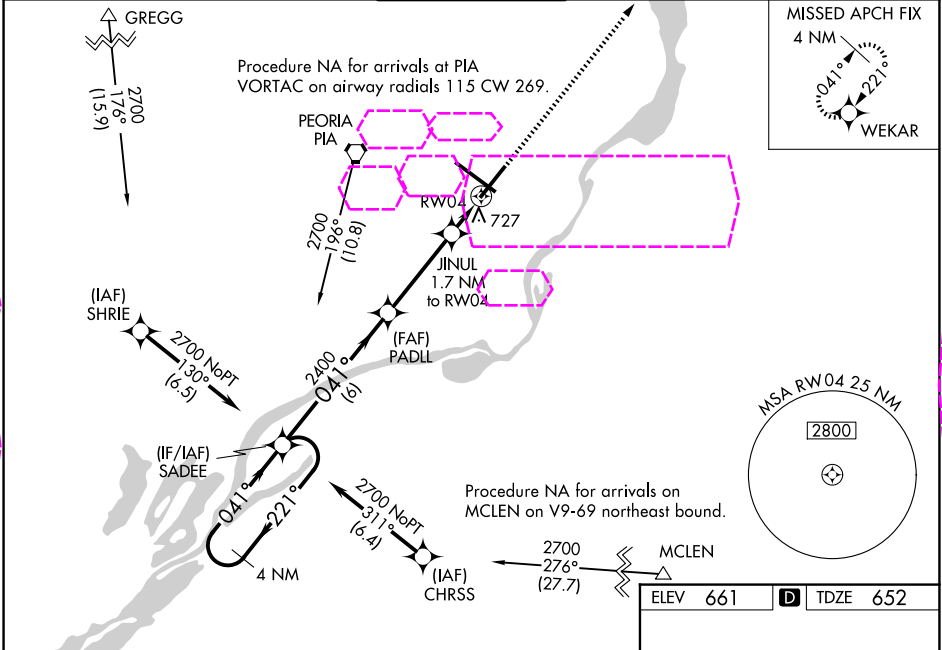
AL-597 (FAA)

25219

WAAS CH <b>56210</b> <b>W04A</b>	APP CRS <b>041°</b>	Rwy Ldg TDZE <b>652</b> Apt Elev <b>661</b>	<b>7826</b>
--	------------------------	---	-------------

RNAV (GPS) RWY 4  
GENERAL DOWNING - PEORIA INTL (PIA)

RNP APCH.		MALSR		MISSED APPROACH: Climb to 2300 direct WEKAR and hold.
⚠ For uncompensated Baro-VNAV systems, LNAV/VNAV NA below -19°C or above 54°C. VDP and Baro-VNAV NA with Logan County altimeter setting. When local altimeter setting not received, use Logan County altimeter setting and increase all DA 89 feet and all MDA 100 feet, increase LNAV/VNAV all Cats visibility 1/8 mile, LNAV Cat C and D visibility 1/4 mile, and Circling Cat C 1/4 mile and Cat D 1/2 mile. For inoperative MALSR using Logan County altimeter setting, increase LPV all Cats visibility to 1 mile. For inop ALS, increase LNAV Cat C/D visibility to 1 SM. Circling Rwy 13, 31 NA at night.				
ATIS <b>126.1 282.2</b>	SAINT LOUIS APP CON <b>125.8 269.2</b>	PEORIA TOWER <b>124.0 353.85</b>	GND CON <b>121.85 348.6</b>	CLNC DEL <b>124.675 317.55</b>



4 NM Holding Pattern		SADEE		PADLL		JINUL 1.7 NM to RW04		2300 ↑ *LNAV only		WEKAR ✦		
2700 ← 221° 041° →		041°		2400		*1220		*0.9 NM to RW04		RW04		
GP 3.00° TCH 55		6 NM		3.7 NM		0.8		0.9				
CATEGORY	A	B		C		D						
LPV DA	857-½		205 (200-½)									
LNAV/ VNAV DA	905-½		253 (300-½)									
LNAV MDA	1000-½	348 (400-½)		1000-⅝		348 (400-⅝)						
CIRCLING	1160-1	499 (500-1)		1180-1½ 519 (600-½)		1400-2¼ 739 (800-2¼)						

