

PEORIA, ILLINOIS

AL-597 (FAA)

24361

WAAS CH 60922 W13A	APP CRS 128°	Rwy Idg 9604 TDZE 632 Apt Elev 661
--	------------------------	---

RNAV (GPS) RWY 13

GENERAL DOWNING - PEORIA INTL (PIA)

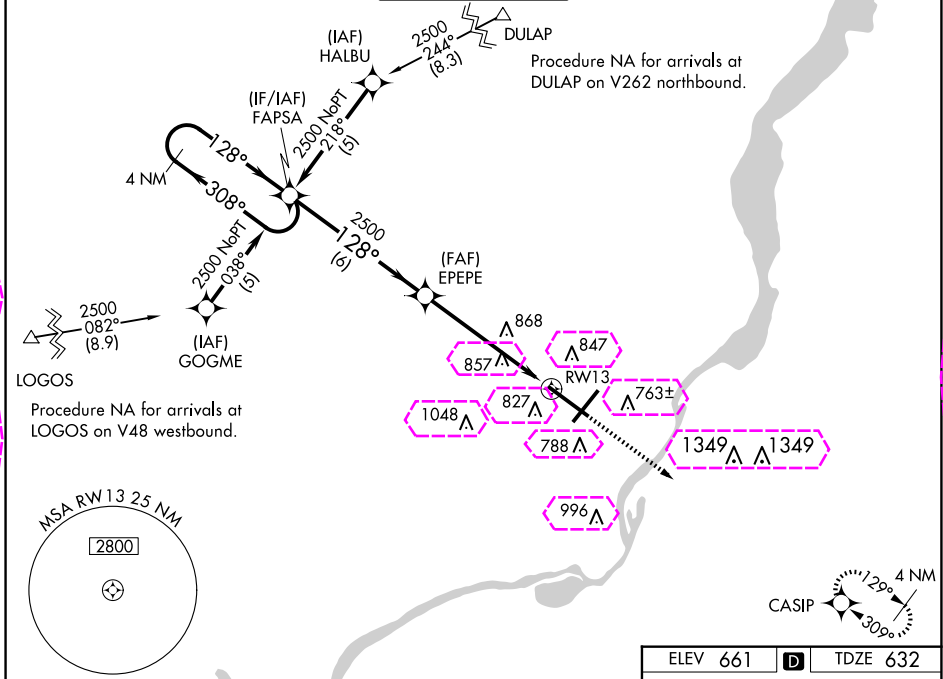
RNP APCH - GPS.

For uncompensated Baro-VNAV systems, LNAV/VNAV NA below -19°C or above 54°C. When local altimeter setting not received, use Lincoln altimeter setting increase LPV DA to 1110 feet and all visibilities ¼ SM. Increase LNAV/VNAV DA to 1168 feet and all visibilities ⅓ SM. Increase all MDAs 100 feet and LNAV visibility Cat C/D ¼ SM, and Circling visibility Cat C/D ½ SM. Baro-VNAV and VDP NA when using Lincoln altimeter setting. For inop ALS, increase LPV all Cats visibility to 1½ SM, LNAV Cat A/B visibility to 1 SM and Cat C/D visibility to 1½ SM. For inop ALS when using Lincoln altimeter setting, increase LPV visibility all Cats to 1½ SM and LNAV Cat A/B visibility to 1 SM.

MALSR

MISSED APPROACH: Climb to 2400 direct CASIP and hold.

ATIS 126.1 282.2	SAINT LOUIS APP CON 125.8 269.2	PEORIA TOWER 124.0 353.85	GND CON 121.85 348.6	CLNC DEL 124.675 317.55
----------------------------	---	-------------------------------------	--------------------------------	-----------------------------------



VGSI and RNAV glidepath not coincident (VGSI Angle 3.00/TCH 57).

4 NM Holding Pattern

FAPSA

EPEPE

2500

GP 3.00° TCH 59

1.3 NM to RW13

RW13

CATEGORY	A	B	C	D
LPV DA		1025-¾	389 (400-¾)	
LNAV/VNAV DA		1083-1	447 (500-1)	
LNAV MDA	1120-½	484 (500-½)	1120-1	484 (500-1)
CIRCLING	1160-1	499 (500-1)	1180-1½ 519 (600-1½)	1400-2¼ 739 (800-2¼)

ELEV 661

TDZE 632

HIRL Rwy 4-22 and 13-31

PEORIA, ILLINOIS
Amdt 1D 10AUG23

40°40'N-89°42'W

GENERAL DOWNING - PEORIA INTL (PIA)
RNAV (GPS) RWY 13

PEORIA, ILLINOIS

AL-597 (FAA)

25219

WAAS CH 60922 W13A	APP CRS 128°	Rwy Ldg 9604 TDZE 632 Apt Elev 661
--	------------------------	---

RNAV (GPS) RWY 13

GENERAL DOWNING - PEORIA INTL (PIA)

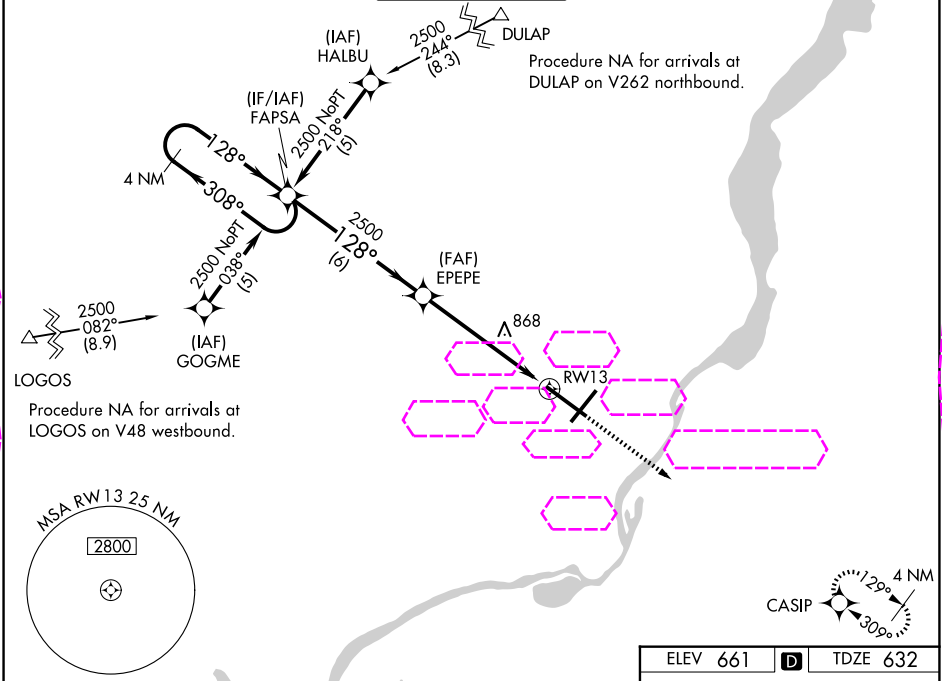
RNP APCH - GPS.



For uncompensated Baro-VNAV systems, LNAV/VNAV NA below -19°C or above 54°C. When local altimeter setting not received, use Lincoln altimeter setting increase LPV DA to 1110 feet and all visibilities ¼ SM. Increase LNAV/VNAV DA to 1168 feet and all visibilities ⅓ SM. Increase all MDAs 100 feet and LNAV visibility Cat C/D ¼ SM, and Circling visibility Cat C/D ½ SM. Baro-VNAV and VDP NA when using Lincoln altimeter setting. For inop ALS, increase LPV all Cats visibility to 1½ SM, LNAV Cat A/B visibility to 1 SM and Cat C/D visibility to 1½ SM. For inop ALS when using Lincoln altimeter setting, increase LPV visibility all Cats to 1½ SM and LNAV Cat A/B visibility to 1 SM.

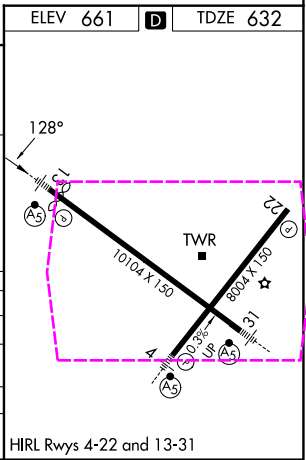
MALSR

MISSED APPROACH: Climb to 2400 direct CASIP and hold.

ATIS 126.1 282.2	SAINT LOUIS APP CON 125.8 269.2	PEORIA TOWER 124.0 353.85	GND CON 121.85 348.6	CLNC DEL 124.675 317.55
----------------------------	---	-------------------------------------	--------------------------------	-----------------------------------



<p>VGSI and RNAV glidepath not coincident (VGSI Angle 3.00/TCH 57).</p>					<p>2400</p> 	<p>CASIP</p> 
<p>4 NM Holding Pattern</p> <p>FAPSA</p> <p>EPEPE</p> <p>2500</p> <p>2500</p> <p>308°</p> <p>128°</p> <p>128°</p> <p>1.3 NM to RW13</p> <p>RW13</p> <p>6 NM</p> <p>4.3 NM</p> <p>1.3</p>						
<p>GP 3.00° TCH 59</p>						
CATEGORY	A	B	C	D		
LPV DA		1025- ³ / ₄	389 (400- ³ / ₄)			
LNAV/ VNAV DA		1083-1	447 (500-1)			
LNAV MDA	1120- ¹ / ₂	484 (500- ¹ / ₂)	1120-1	484 (500-1)		
CIRCLING	1160-1	499 (500-1)	1180- ¹ / ₂ 519 (600- ¹ / ₂)	1400-2 ¹ / ₄ 739 (800-2 ¹ / ₄)		



PEORIA, ILLINOIS
Amdt 1D 10AUG23

GENERAL DOWNING - PEORIA INTL (PIA)
RNAV (GPS) RWY 13
40°40'N-89°42'W

EC-3, 07 AUG 2025 to 04 SEP 2025

EC-3, 07 AUG 2025 to 04 SEP 2025