

PEORIA, ILLINOIS

AL-597 (FAA)

24361

LOM PI	APP CRS	Rwy Idg
356	309°	10104
		TDZE 650
		Apt Elev 661

NDB RWY 31

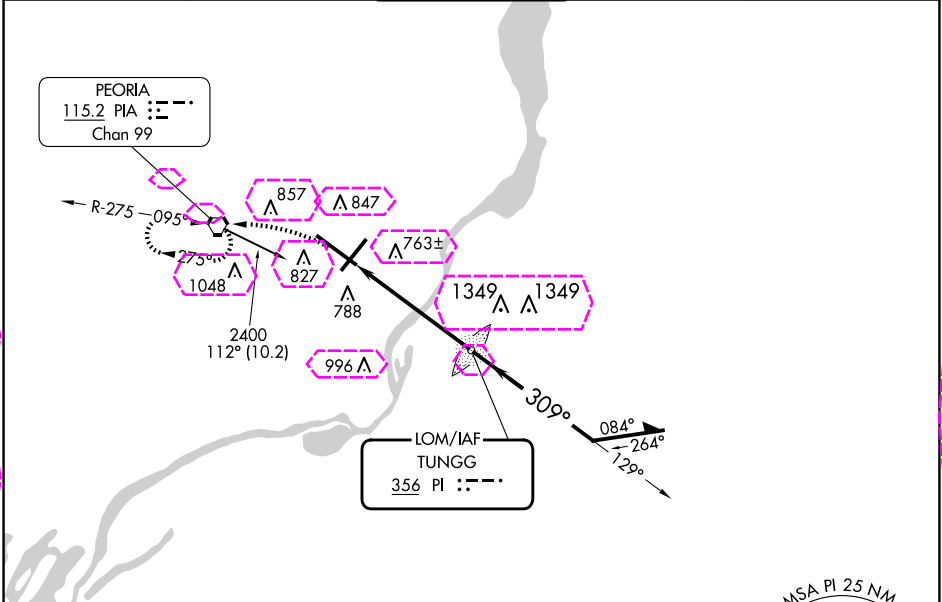
GENERAL DOWNING - PEORIA INTL (PIA)

▼ For inop ALS, increase S-31 Cat A/B visibility to RVR 5500, and Cat C/D to 1 3/8 SM. When local altimeter setting not received, use Logan County altimeter setting and increase all MDA 100 feet, increase S-31 Cat C and D visibility 1/4 mile, and Circling Cat C 1/4 mile and Cat D 1/2 mile. Circling Rwy 13, 31 NA at night.

MALSR

MISSED APPROACH: Climbing left turn 2400 direct PIA VORTAC and hold.

ATIS	SAINT LOUIS APP CON	PEORIA TOWER	GND CON	CLNC DEL
126.1 282.2	125.8 269.2	124.0 353.85	121.85 348.6	124.675 317.55



ELEV 661

TDZE 650

HIRL Rws 4-22 and 13-31

FAF to MAP 5.2 NM

Knots	60	90	120	150	180
Min:Sec	5:12	3:28	2:36	2:05	1:44

	2400	PIA		PI LOM	129°	2400	309°	2400	Remain within 10 NM
					3.09°	TCH 50			
					5.2 NM				
CATEGORY	A	B	C	D					
S-31	1140/40	490 (500-3/4)	1140/50	490 (500-1)					
<input checked="" type="checkbox"/> CIRCLING	1160-1	499 (500-1)	1180-1 1/2 519 (600-1 1/2)	1400-2 1/4 739 (800-2 1/4)					

EC-3, 07 AUG 2025 to 04 SEP 2025