

PEORIA, ILLINOIS

AL-597 (FAA)

25163

LOC I-PIA	APP CRS	Rwy Ldg	10104
109.9	309°	TDZE	650
		Apt Elev	661

ILS or LOC RWY 31

GENERAL DOWNING - PEORIA INTL (PIA)

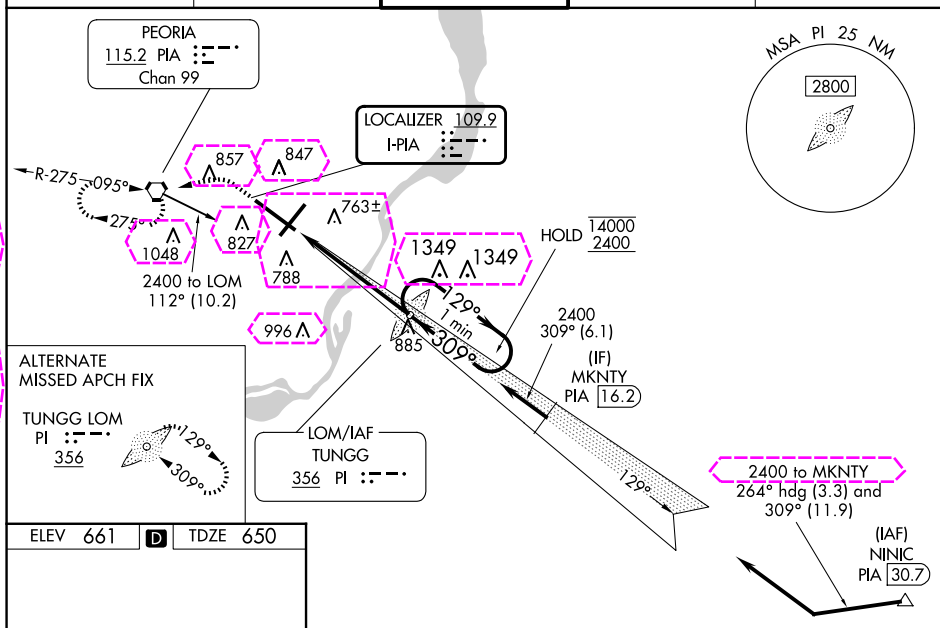
DME required.

When local altimeter setting not received, use AAA altimeter setting: increase S-ILS 31 DA to 939 feet; increase all MDAs 100 feet and S-LOC 31 visibility CAT C/D/E to 1 1/4 SM and Circling visibility Cat C 1/4 SM and Cat D 1/2 SM. Circling Rwy 13, 31 NA at night. For inop ALS, when using AAA altimeter setting, increase S-ILS 31 all Cats visibility to RVR 4500, S-LOC 31 visibility Cats C/D/E to 1 3/8 SM. DME from PIA VORTAC. DME use requires simultaneous reception of I-PIA and PIA DME. For inop ALS, increase S-ILS 31 Cat E visibility to RVR 4000 and S-LOC 31 Cats C/D/E to 1 3/8 SM. *RVR 1800 authorized with the use of FD or AP or HUD to DA. (NA when using AAA altimeter setting).



MISSED APPROACH: Climb to 1200 then climbing left turn to 2400 direct PIA VORTAC and hold, continue climb-in-hold to 2400.

ATIS	SAINT LOUIS APP CON	PEORIA TOWER	GND CON	CLNC DEL
126.1 282.2	125.8 269.2	124.0 353.85	121.85 348.6	124.675 317.55



CATEGORY	A	B	C	D	E
S-ILS 31 *	850/24		200 (200-1/2)		
S-LOC 31	1120/24	470 (500-1/2)	1120/50	470 (500-1)	
CIRCLING	1160-1	499 (500-1)	1180-1 1/2 519 (600-1 1/2)	1400-2 1/4 739 (800-2 1/4)	1680-3 1019 (1100-3)

HIRL Rwy 4-22 and 13-31

PEORIA, ILLINOIS

Amdt 8 26DEC24

GENERAL DOWNING - PEORIA INTL (PIA)

40°40'N-89°42'W

ILS or LOC RWY 31

ILS or LOC RWY 31