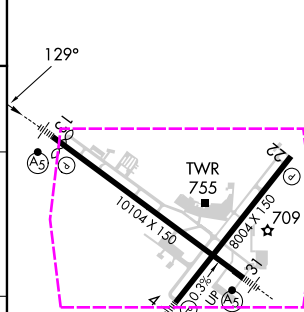
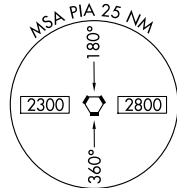


ILS or LOC RWY 13

MISSED APPROACH: Climb to 2500 direct TUNGG LOM and hold, continue climb-in-hold to 2500.

MALSR

CLNC DEL
124.675 317.55



HIRL Rwy's 4-22 and 13-31					
FAF to MAP 5.3 NM					
Knots	60	90	120	150	180
Min:Sec	5:18	3:32	2:39	2:07	1:46

GENERAL DOWNING - PEORIA INTL(PIA)
ILS or LOC RWY 13

PEORIA, ILLINOIS

AL-597 (FAA)

25219

LOC I-GZX 109.9	APP CRS 129°	Rwy Ldg 9604 TDZE 632 Apt Elev 661
---------------------------	------------------------	--

ILS or LOC RWY 13
GENERAL DOWNING - PEORIA INTL (PIA)

ADF required. DME required for procedure entry at GREGG.	MALSR 	MISSED APPROACH: Climb to 2500 direct TUNGG LOM and hold, continue climb-in-hold to 2500.
<p>⚠ Circling Rwy 13, 31 NA at night. When local altimeter setting not received, use AAA altimeter setting and increase S-ILS* 13 DA to 921 feet; increase all MDAs 100 feet; and Circling visibility Cat C/D ½ SM. For inop ALS when using AAA altimeter setting, increase S-ILS 13* all Cats visibility to RVR 4500. * RVR 1800 authorized with the use of FD or AP or HUD to DA.</p>		

ATIS 126.1 282.2	SAINT LOUIS APP CON 125.8 269.2	PEORIA TOWER 124.0 353.85	GND CON 121.85 348.6	CLNC DEL 124.675 317.55
----------------------------	---	-------------------------------------	--------------------------------	-----------------------------------

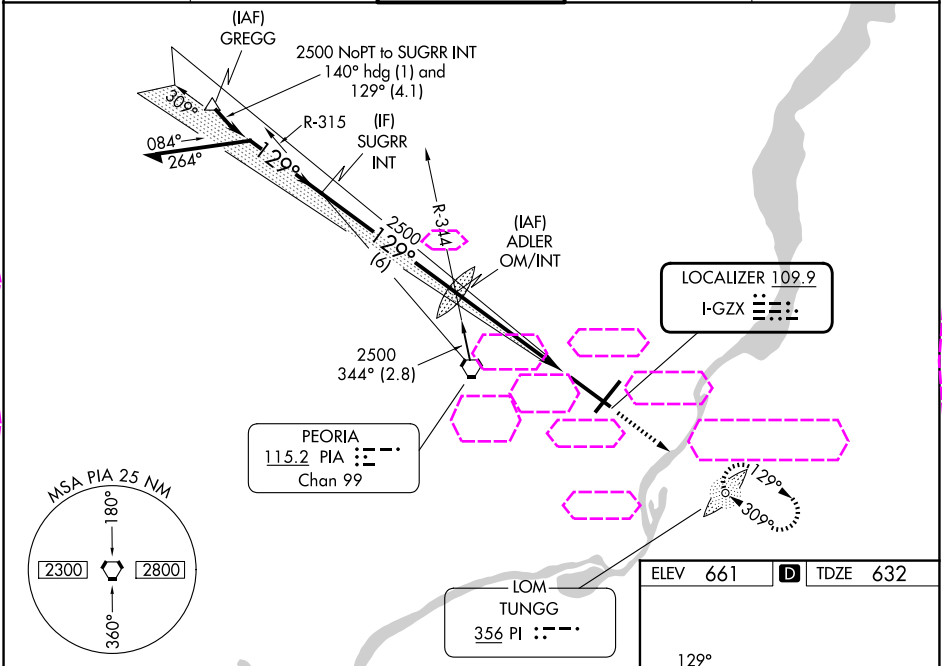


Diagram illustrating the ADLER OM/INT station and associated navigation parameters:

- Remain within 10 NM**: A shaded sector indicating the operational area.
- ADLER OM/INT**: The station identifier.
- 2500**: Frequency and altitude values.
- SUGRR INT**: A specific navigation point.
- 2363**: A distance or frequency value.
- GS 3.00° TCH 56**: Glide slope and threshold information.
- 5.3 NM**: Distance from the station to the runway.

CATEGORY	A	B	C	D
S-ILS 13 *	832/24		200 (200-½)	
S-LOC 13	1180/24	548 (600-½)	1180/60	548 (600-1¼)
CIRCLING	1180-1	519 (600-1)	1180-1½ 519 (600-1%)	1400-2¼ 739 (800-2¼)

Diagram illustrating the HIRL Rwy 4-22 and 13-31 station and associated navigation parameters:

- HIRL Rwy 4-22 and 13-31**: The station identifier.
- FAF to MAP 5.3 NM**: Distance from the station to the runway.
- 10104 X 150**: A distance or frequency value.
- 8004 X 150**: A distance or frequency value.
- 10104 X 150**: A distance or frequency value.
- 8004 X 150**: A distance or frequency value.
- 10104 X 150**: A distance or frequency value.
- 8004 X 150**: A distance or frequency value.
- 10104 X 150**: A distance or frequency value.
- 8004 X 150**: A distance or frequency value.
- 10104 X 150**: A distance or frequency value.
- 8004 X 150**: A distance or frequency value.
- 10104 X 150**: A distance or frequency value.
- 8004 X 150**: A distance or frequency value.
- 10104 X 150**: A distance or frequency value.
- 8004 X 150**: A distance or frequency value.
- 10104 X 150**: A distance or frequency value.
- 8004 X 150**: A distance or frequency value.
- 10104 X 150**: A distance or frequency value.
- 8004 X 150**: A distance or frequency value.
- 10104 X 150**: A distance or frequency value.
- 8004 X 150**: A distance or frequency value.
- 10104 X 150**: A distance or frequency value.
- 8004 X 150**: A distance or frequency value.
- 10104 X 150**: A distance or frequency value.
- 8004 X 150**: A distance or frequency value.
- 10104 X 150**: A distance or frequency value.
- 8004 X 150**: A distance or frequency value.
- 10104 X 150**: A distance or frequency value.
- 8004 X 150**: A distance or frequency value.
- 10104 X 150**: A distance or frequency value.
- 8004 X 150**: A distance or frequency value.
- 10104 X 150**: A distance or frequency value.
- 8004 X 150**: A distance or frequency value.
- 10104 X 150**: A distance or frequency value.
- 8004 X 150**: A distance or frequency value.
- 10104 X 150**: A distance or frequency value.
- 8004 X 150**: A distance or frequency value.
- 10104 X 150**: A distance or frequency value.
- 8004 X 150**: A distance or frequency value.
- 10104 X 150**: A distance or frequency value.
- 8004 X 150**: A distance or frequency value.
- 10104 X 150**: A distance or frequency value.
- 8004 X 150**: A distance or frequency value.
- 10104 X 150**: A distance or frequency value.
- 8004 X 150**: A distance or frequency value.
- 10104 X 150**: A distance or frequency value.
- 8004 X 150**: A distance or frequency value.
- 10104 X 150**: A distance or frequency value.
- 8004 X 150**: A distance or frequency value.
- 10104 X 150**: A distance or frequency value.
- 8004 X 150**: A distance or frequency value.
- 10104 X 150**: A distance or frequency value.
- 8004 X 150**: A distance or frequency value.
- 10104 X 150**: A distance or frequency value.
- 8004 X 150**: A distance or frequency value.
- 10104 X 150**: A distance or frequency value.
- 8004 X 150**: A distance or frequency value.
- 10104 X 150**: A distance or frequency value.
- 8004 X 150**: A distance or frequency value.
- 10104 X 150**: A distance or frequency value.
- 8004 X 150**: A distance or frequency value.
- 10104 X 150**: A distance or frequency value.
- 8004 X 150**: A distance or frequency value.
- 10104 X 150**: A distance or frequency value.
- 8004 X 150**: A distance or frequency value.
- 10104 X 150**: A distance or frequency value.
- 8004 X 150**: A distance or frequency value.
- 10104 X 150**: A distance or frequency value.
- 8004 X 150**: A distance or frequency value.
- 10104 X 150**: A distance or frequency value.
- 8004 X 150**: A distance or frequency value.
- 10104 X 150**: A distance or frequency value.
- 8004 X 150**: A distance or frequency value.
- 10104 X 150**: A distance or frequency value.
- 8004 X 150**: A distance or frequency value.
- 10104 X 150**: A distance or frequency value.
- 8004 X 150**: A distance or frequency value.
- 10104 X 150**: A distance or frequency value.
- 8004 X 150**: A distance or frequency value.
- 10104 X 150**: A distance or frequency value.
- 8004 X 150**: A distance or frequency value.
- 10104 X 150**: A distance or frequency value.
- 8004 X 150**: A distance or frequency value.
- 10104 X 150**: A distance or frequency value.
- 8004 X 150**: A distance or frequency value.
- 10104 X 150**: A distance or frequency value.
- 8004 X 150**: A distance or frequency value.
- 10104 X 150**: A distance or frequency value.
- 8004 X 150**: A distance or frequency value.
- 10104 X 150**: A distance or frequency value.
- 8004 X 150**: A distance or frequency value.
- 10104 X 150**: A distance or frequency value.
- 8004 X 150**: A distance or frequency value.
- 10104 X 150**: A distance or frequency value.
- 8004 X 150**: A distance or frequency value.
- 10104 X 150**: A distance or frequency value.
- 8004 X 150**: A distance or frequency value.
- 10104 X 150**: A distance or frequency value.
- 8004 X 150**: A distance or frequency value.
- 10104 X 150**: A distance or frequency value.
- 8004 X 150**: A distance or frequency value.
- 10104 X 150**: A distance or frequency value.
- 8004 X 150**: A distance or frequency value.
- 10104 X 150**: A distance or frequency value.
- 8004 X 150**: A distance or frequency value.
- 10104 X 150**: A distance or frequency value.
- 8004 X 150**: A distance or frequency value.
- 10104 X 150**: A distance or frequency value.
- 8004 X 150**: A distance or frequency value.
- 10104 X 150**: A distance or frequency value.
- 8004 X 150**: A distance or frequency value.
- 10104 X 150**: A distance or frequency value.
- 8004 X 150**: A distance or frequency value.
- 10104 X 150**: A distance or frequency value.
- 8004 X 150**: A distance or frequency value.
- 10104 X 150**: A distance or frequency value.
- 8004 X 150**: A distance or frequency value.
- 10104 X 150**: A distance or frequency value.
- 8004 X 150**: A distance or frequency value.
- 10104 X 150**: A distance or frequency value.
- 8004 X 150**: A distance or frequency value.
- 10104 X 150**: A distance or frequency value.
- 8004 X 150**: A distance or frequency value.
- 10104 X 150**: A distance or frequency value.
- 8004 X 150**: A distance or frequency value.
- 10104 X 150**: A distance or frequency value.
- 8004 X 150**: A distance or frequency value.
- 10104 X 150**: A distance or frequency value.
- 8004 X 150**: A distance or frequency value.
- 10104 X 150**: A distance or frequency value.
- 8004 X 150**: A distance or frequency value.
- 10104 X 150**: A distance or frequency value.
- 8004 X 150**: A distance or frequency value.
- 10104 X 150**: A distance or frequency value.
- 8004 X 150**: A distance or frequency value.
- 10104 X 150**: A distance or frequency value.
- 8004 X 150**: A distance or frequency value.
- 10104 X 150**: A distance or frequency value.
- 8004 X 150**: A distance or frequency value.
- 10104 X 150**: A distance or frequency value.
- 8004 X 150**: A distance or frequency value.
- 10104 X 150**: A distance or frequency value.
- 8004 X 150**: A distance or frequency value.
- 10104 X 150**: A distance or frequency value.
- 8004 X 150**: A distance or frequency value.
- 10104 X 150**: A distance or frequency value.
- 8004 X 150**: A distance or frequency value.
- 10104 X 150**: A distance or frequency value.
- 8004 X 150**: A distance or frequency value.
- 10104 X 150**: A distance or frequency value.
- 8004 X 150**: A distance or frequency value.
- 10104 X 150**: A distance or frequency value.
- 8004 X 150**: A distance or frequency value.
- 10104 X 150**: A distance or frequency value.
- 8004 X 150**: A distance or frequency value.
- 10104 X 150**: A distance or frequency value.
- 8004 X 150**: A distance or frequency value.
- 10104 X 150**: A distance or frequency value.
- 8004 X 150**: A distance or frequency value.
- 10104 X 150**: A distance or frequency value.
- 8004 X 150**: A distance or frequency value.
- 10104 X 150**: A distance or frequency value.
- 8004 X 150**: A distance or frequency value.
- 10104 X 150**: A distance or frequency value.
- 8004 X 150**: A distance or frequency value.
- 10104 X 150**: A distance or frequency value.
- 8004 X 150**: A distance or frequency value.
- 10104 X 150**: A distance or frequency value.
- 8004 X 150**: A distance or frequency value.
- 10104 X 150**: A distance or frequency value.
- 8004 X 150**: A distance or frequency value.
- 10104 X 150**: A distance or frequency value.
- 8004 X 150**: A distance or frequency value.
- 10104 X 150**: A distance or frequency value.
- 8004 X 150**: A distance or frequency value.
- 10104 X 150**: A distance or frequency value.
- 8004 X 150**: A distance or frequency value.
- 10104 X 150**: A distance or frequency value.
- 8004 X 150**: A distance or frequency value.
- 10104 X 150**: A distance or frequency value.
- 8004 X 150**: A distance or frequency value.
- 10104 X 150**: A distance or frequency value.
- 8004 X 150**: A distance or frequency value.
- 10104 X 150**: A distance or frequency value.
- 8004 X 150**: A distance or frequency value.
- 10104 X 150**: A distance or frequency value.
- 8004 X 150**: A distance or frequency value.
- 10104 X 150**: A distance or frequency value.
- 8004 X 150**: A distance or frequency value.
- 10104 X 150**: A distance or frequency value.
- 8004 X 150**: A distance or frequency value.
- 10104 X 150**: A distance or frequency value.
- 8004 X 150**: A distance or frequency value.
- 10104 X 150**: A distance or frequency value.
- 8004 X 150**

PEORIA, ILLINOIS
Amdt 7 12JUN25

40°40'N-89°42'W

GENERAL DOWNING - PEORIA INTL (PIA)
ILS or LOC RWY 13

EC-3, 07 AUG 2025 to 04 SEP 2025

EC-3, 07 AUG 2025 to 04 SEP 2025