

PEORIA, ILLINOIS

AL-597 (FAA)

24361

LOC/DME I-RNX <b>110.55</b> Chan <b>42 (Y)</b>	APP CRS <b>041°</b>	Rwy Idg <b>7826</b> TDZE <b>652</b> Apt Elev <b>661</b>
--	------------------------	---

**ILS RWY 4 (SA CAT I & II)**  
GENERAL DOWNING - PEORIA INTL(PIA)

DME required.

SA CAT I: Requires specific OPSPEC, MSPEC, or LOA approval and use of HUD to DH. SA CAT II: Reduced Lighting: requires specific OPSPEC, MSPEC, or LOA approval and use of Autoland or HUD to touchdown.

MALSR

MISSED APPROACH: Climb to 1500 then climbing left turn to 2700 direct PIA VORTAC and hold, continue climb-in-hold to 2700.

ATIS <b>126.1 282.2</b>	SAINT LOUIS APP CON <b>125.8 269.2</b>	PEORIA TOWER <b>124.0 353.85</b>	GND CON <b>121.85 348.6</b>	CLNC DEL <b>124.675 317.55</b>
----------------------------	---	-------------------------------------	--------------------------------	-----------------------------------

Diagram details: The main approach path starts from the south, passing through a 2700 ft altitude point (190°/10.8 NM) and a 2400 ft altitude point (041°/16 NM). It then turns left to 221° and continues to the runway. Key altitudes include 1500, 2700, 2400, and 221°. Navigation aids shown include TUNGG PI (356), PEORIA 115.2 PIA (Chan 99), LOCALIZER 110.55 (I-RNX, Chan 42(Y)), and LOM TUNGG (356 PI). Obstacles are marked with their MSL altitudes: 857, 847, 1048, 827, 732, 763, 788, 1349, 996, and 1349. A missed approach procedure is indicated: climb to 1500, then climbing left turn to 2700 direct PIA VORTAC and hold, continue climb-in-hold to 2700.

Diagram details: This section shows the holding pattern and final approach segment. The holding pattern is a one-minute holding pattern at 2700 ft, with a 5100 ft altitude point. The final approach segment starts at 2700 ft, turns left to 221°, and then turns right to 041°. Key altitudes include 5100, 2700, 2400, and 221°. Navigation aids shown include SADEE I-RNX (12.8), PADLL INT I-RNX (6.8), and I-RNX (1.4). The diagram also shows the 6 NM and 5.4 NM distances from the runway.

Diagram details: This diagram shows the runway and taxiway layout. The runway is 221°/041°. The taxiway is 10104 X 130. The diagram also shows the TWR 755 and the 709 ft altitude point.

PEORIA, ILLINOIS  
Amdt 4 07OCT21

GENERAL DOWNING - PEORIA INTL(PIA)  
40°40'N-89°42'W

**ILS RWY 4 (SA CAT I & II)**

PEORIA, ILLINOIS

AL-597 (FAA)

25219

LOC/DME I-RNX <b>110.55</b> Chan <b>42 (Y)</b>	APP CRS <b>041°</b>	Rwy Ldg <b>7826</b> TDZE <b>652</b> Apt Elev <b>661</b>
--	------------------------	---

**ILS RWY 4 (SA CAT I & II)**  
GENERAL DOWNING - PEORIA INTL(PIA)

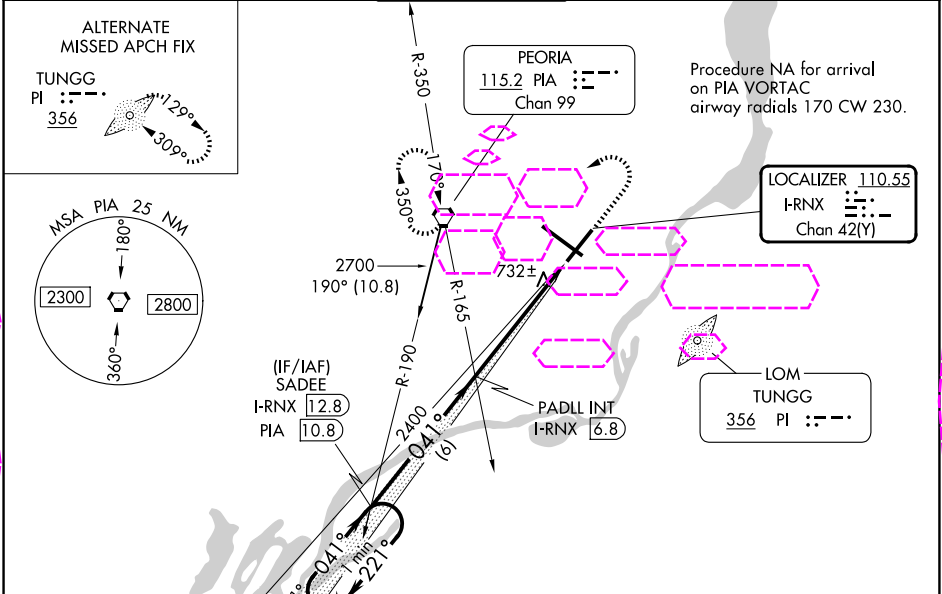
DME required.

SA CAT I: Requires specific OPSPEC, MSPEC, or LOA approval and use of HUD to DH. SA CAT II: Reduced lighting: requires specific OPSPEC, MSPEC, or LOA approval and use of Autoland or HUD to touchdown.

MALSR

MISSED APPROACH: Climb to 1500 then climbing left turn to 2700 direct PIA VORTAC and hold, continue climb-in-hold to 2700.

ATIS <b>126.1 282.2</b>	SAINT LOUIS APP CON <b>125.8 269.2</b>	PEORIA TOWER <b>124.0 353.85</b>	GND CON <b>121.85 348.6</b>	CLNC DEL <b>124.675 317.55</b>
----------------------------	---	-------------------------------------	--------------------------------	-----------------------------------



One Minute Holding Pattern

SADEE I-RNX 12.8

PADLL INT I-RNX 6.8

I-RNX 1.4

1500

2700

PIA

CATEGORY	A	B	C	D
S-ILS 4	SA CAT I RA 171/14 150 DA 802			
S-ILS 4	SA CAT II RA 115/12 100 DA 752			

**SA CATEGORY I & II ILS - SPECIAL AIRCREW & AIRCRAFT CERTIFICATION REQUIRED**

HIRL Rwy's 4-22 and 13-31

EC-3, 07 AUG 2025 to 04 SEP 2025

EC-3, 07 AUG 2025 to 04 SEP 2025

PEORIA, ILLINOIS  
Amdt 4 07OCT21

GENERAL DOWNING - PEORIA INTL(PIA)  
40°40'N-89°42'W  
**ILS RWY 4 (SA CAT I & II)**