

LA GRANDE, OREGON

AL-591 (FAA)

25163

WAAS CH 66000 W17A	APP CRS 166°	Rwy Idg 3400 TDZE 2714 Apt Elev 2718
--	------------------------	---

RNAV (GPS) RWY 17

LA GRANDE/UNION COUNTY (LGD)

RNP APCH - GPS.

▼

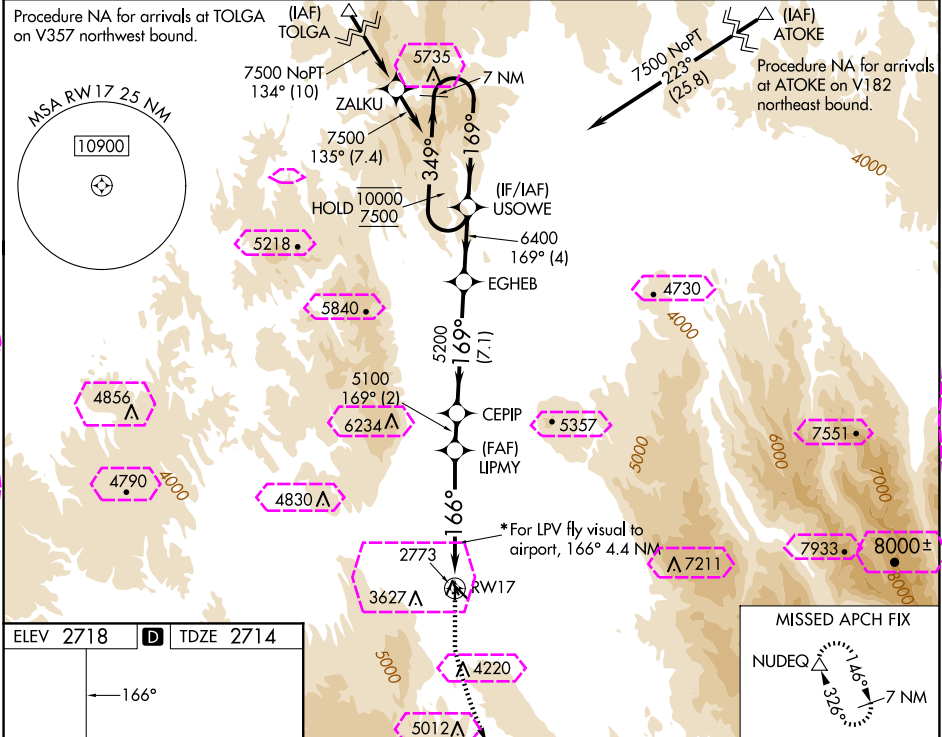
⚠

❄

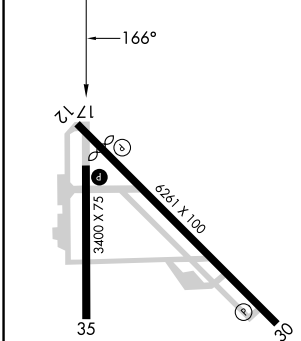
Circling NA for Cats C and D southwest of Rwy 12-30.
Fly visual to airport authorized during day only.
*Day visibility minimums 3 SM.

MISSED APPROACH: Climb to 4600 then climbing left turn to 9000 direct NUDEQ and hold, continue climb-in-hold to 9000.

AWOS-3PT 135.075	SEATTLE CENTER 132.6 269.35	UNICOM 122.8 (CTAF) 0
----------------------------	---------------------------------------	---------------------------------



ELEV 2718	D	TDZE 2714
-----------	----------	-----------



REIL Rwy 30
REIL Rwy 17 and 35
MIRL Rwy 12-30 and 17-35

	4600	9000	NUDEQ	
	↑	↩	△	
	*For LPV fly visual to airport, 166° 4.4 NM.			
	5.5 NM to RWY 17			
	5.5 NM			
	1.8 NM			
	2 NM			
	7.1 NM			
	4 NM			
CATEGORY	A	B	C	D
LPV DA*	4157-6 1443 (1500-6)			
LNAV MDA	4540-1¼ 1826 (1900-1¼)	4540-1½ 1826 (1900-1½)	4560-3 1846 (1900-3)	4580-3 1866 (1900-3)
CIRCLING	4540-1¼ 1822 (1900-1¼)	4540-1½ 1822 (1900-1½)	4560-3 1842 (1900-3)	4580-3 1862 (1900-3)

LA GRANDE, OREGON

Amtd 2 12JUN25

45°17'N-118°00'W

LA GRANDE/UNION COUNTY (LGD)

RNAV (GPS) RWY 17

NW-1, 10 JUL 2025 to 07 AUG 2025

NW-1, 10 JUL 2025 to 07 AUG 2025

