

NDB-B

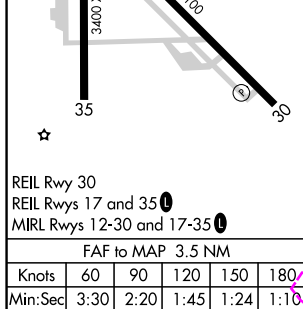
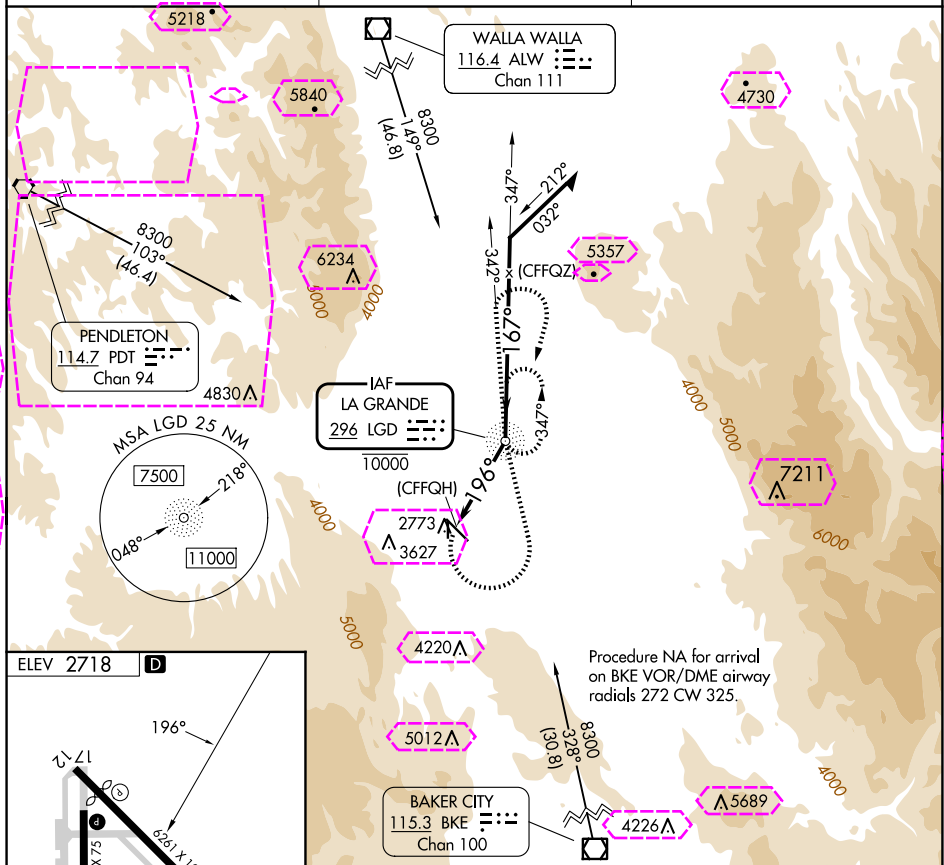
LA GRANDE/UNION COUNTY (LGD)

NDB LGD <u>296</u>	APP CRS 196°	Rwy Ldg TDZE Apt Elev	N/A N/A 2718
------------------------------	------------------------	-----------------------------	---

NA Circling NA for Cat C southwest of Rwy 12-30.

MISSED APPROACH: Climbing left turn to 6500 direct LGD NDB and on bearing 342° from LGD NDB, then climbing right turn to 7700 direct LGD NDB and hold.

AWOS-3PT 135.075	SEATTLE CENTER 132.6 269.35	UNICOM 122.8 (CTAF) 0
----------------------------	---------------------------------------	---------------------------------



<table><tr><td>CATEGORY</td><td>A</td><td>B</td><td>C</td><td>D</td></tr><tr><td>CIRCLING</td><td>4600-1¼ 1882 (1900-1¼)</td><td>4600-1½ 1882 (1900-1½)</td><td>4600-3 1882 (1900-3)</td><td>NA</td></tr></table>					CATEGORY	A	B	C	D	CIRCLING	4600-1¼ 1882 (1900-1¼)	4600-1½ 1882 (1900-1½)	4600-3 1882 (1900-3)	NA
CATEGORY	A	B	C	D										
CIRCLING	4600-1¼ 1882 (1900-1¼)	4600-1½ 1882 (1900-1½)	4600-3 1882 (1900-3)	NA										
CATEGORY	A	B	C	D										
CIRCLING	4600-1¼ 1882 (1900-1¼)	4600-1½ 1882 (1900-1½)	4600-3 1882 (1900-3)	NA										

LA GRANDE, OREGON
Amdt 2A 08SEP22

LA GRANDE/UNION COUNTY (LGD)

NDB-B

45°17'N-118°00'W

LA GRANDE, OREGON

AL-591 (FAA)

25219

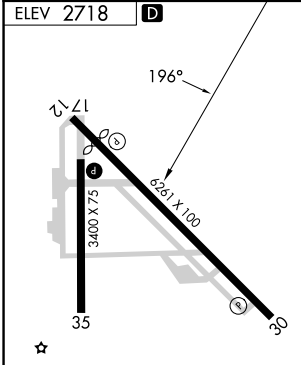
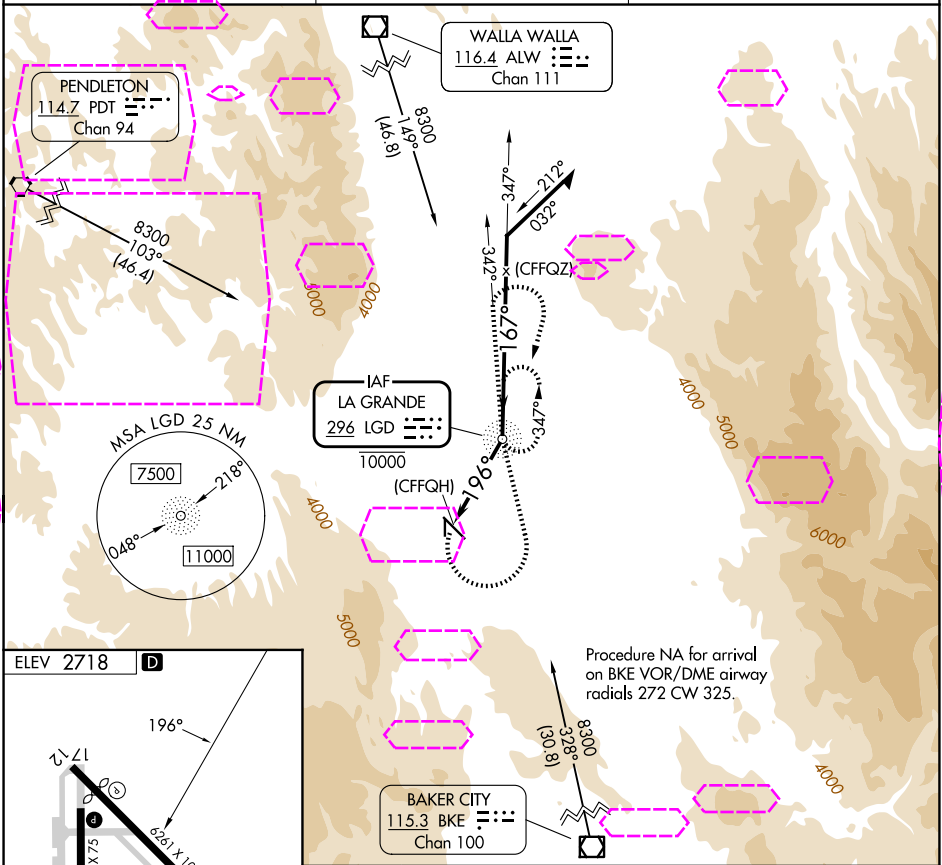
NDB LGD 296	APP CRS 196°	Rwy Ldg TDZE Apt Elev N/A N/A 2718
-----------------------	------------------------	--

NDB-B

LA GRANDE/UNION COUNTY (LGD)

NA Circling NA for Cat C southwest of Rwy 12-30. 16°C	MISSED APPROACH: Climbing left turn to 6500 direct LGD NDB and on bearing 342° from LGD NDB, then climbing right turn to 7700 direct LGD NDB and hold.
---	--

AWOS-3PT 135.075	SEATTLE CENTER 132.6 269.35	UNICOM 122.8 (CTAF)
----------------------------	---------------------------------------	-------------------------------



REIL Rwy 30
REIL Rwy 17 and 35
MIRL Rwy 12-30 and 17-35

FAF to MAP 3.5 NM					
Knots	60	90	120	150	180
Min:Sec	3:30	2:20	1:45	1:24	1:10

						Remain within 10 NM	

LA GRANDE, OREGON
Amdt 2A 08SEP22

45°17'N-118°00'W

LA GRANDE/UNION COUNTY (LGD)

NDB-B

NW-1, 07 AUG 2025 to 04 SEP 2025

NW-1, 07 AUG 2025 to 04 SEP 2025