

IDAHO FALLS, IDAHO

AL-590 (FAA)

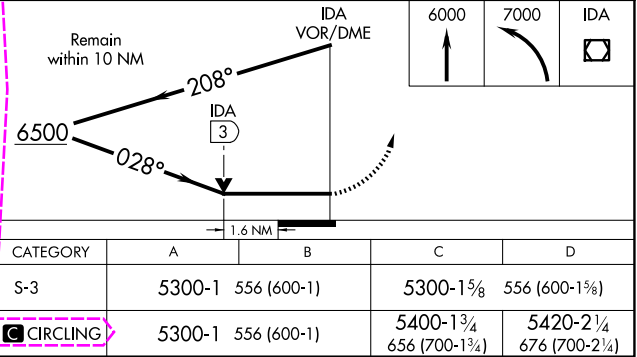
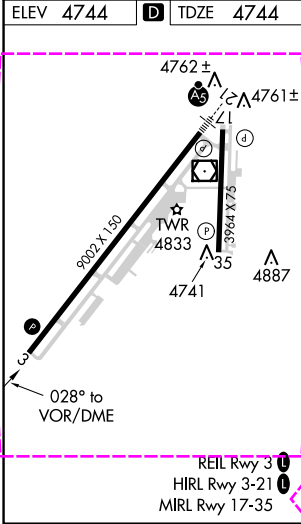
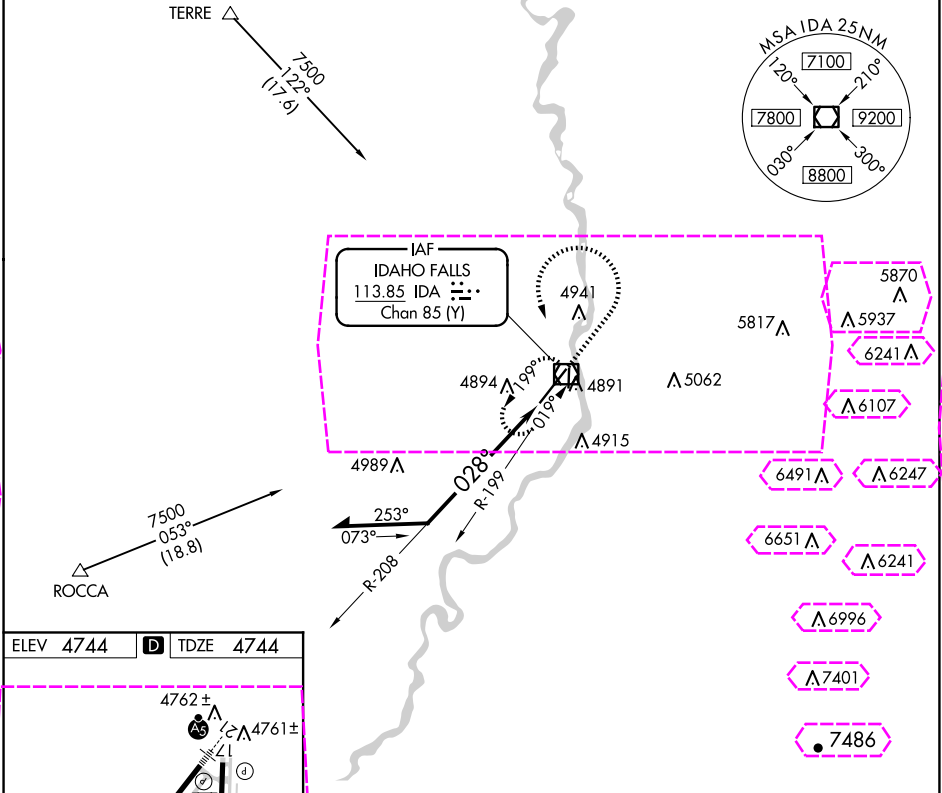
21224

VOR/DME IDA 113.85 Chan 85 (Y)	APP CRS 028°	Rwy Idg TDZE 4744 Apt Elev 4744
--	------------------------	---

VOR RWY 3
IDAHO FALLS RGNL (IDA)

ATIS 135.325		SALT LAKE CENTER 128.35 239.25		IDAHO FALLS TOWER ★ 118.5 (CTAF) 0 257.8		GND CON 121.7	CLNC DEL 121.7	GCO 121.725	UNICOM 122.95
------------------------	--	--	--	---	--	-------------------------	--------------------------	-----------------------	-------------------------

MISSED APPROACH: Climb to 6000 then climbing left turn to 7000 direct IDA VOR/DME and hold.



IDAHO FALLS, IDAHO
Amdt 6D 03JAN19

43°31'N-112°04'W

IDAHO FALLS RGNL (IDA)
VOR RWY 3

NW-1, 10 JUL 2025 to 07 AUG 2025

NW-1, 10 JUL 2025 to 07 AUG 2025

IDAHO FALLS, IDAHO

AL-590 (FAA)

25219

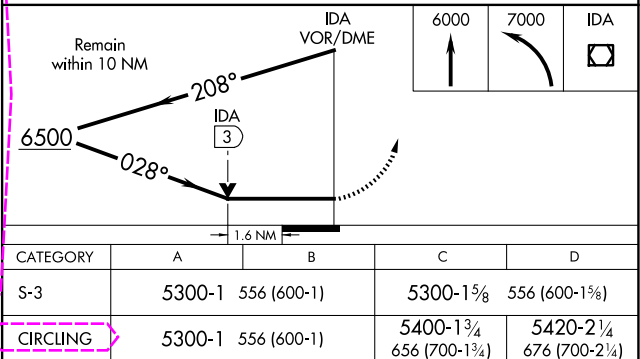
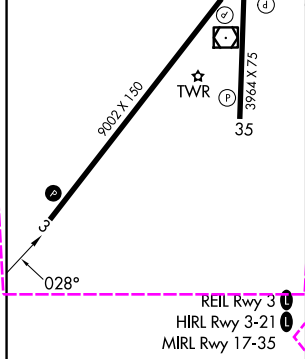
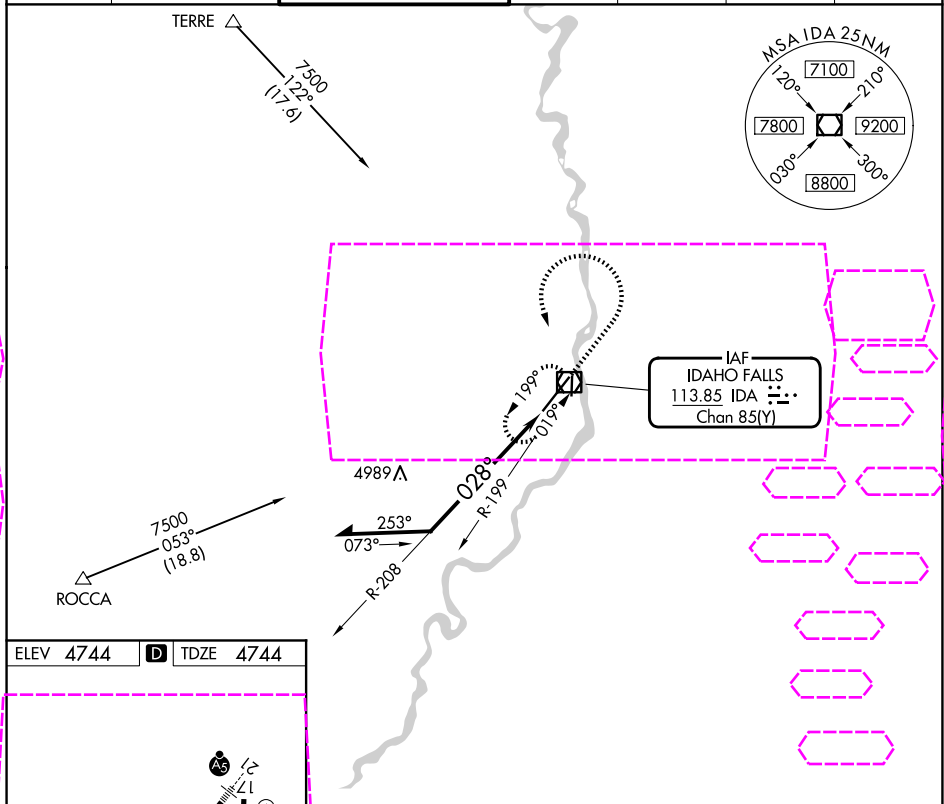
VOR/DME IDA 113.85 Chan 85 (Y)	APP CRS 028°	Rwy Ldg TDZE 4744 Apt Elev 4744
--	------------------------	---

VOR RWY 3

IDAHO FALLS RGNL (IDA)

MISSED APPROACH: Climb to 6000 then climbing left turn to 7000 direct IDA VOR/DME and hold.	
---	--

ATIS 135.325	SALT LAKE CENTER 128.35 239.25	IDAHO FALLS TOWER ★ 118.5 (CTAF) 0 257.8	GND CON 121.7	CLNC DEL 121.7	GCO 121.725	UNICOM 122.95
------------------------	--	---	-------------------------	--------------------------	-----------------------	-------------------------



IDAHO FALLS, IDAHO
Amdt 6D 03JAN19

43°31'N-112°04'W

IDAHO FALLS RGNL (IDA)
VOR RWY 3

NW-1, 07 AUG 2025 to 04 SEP 2025

NW-1, 07 AUG 2025 to 04 SEP 2025