

IDAHO FALLS, IDAHO

AL-590 (FAA)

21 224

VOR/DME IDA <b>113.85</b> Chan <b>85 (Y)</b>	APP CRS <b>192°</b>	Rwy Idg TDZE <b>4735</b> Apt Elev <b>4744</b>
--	------------------------	---

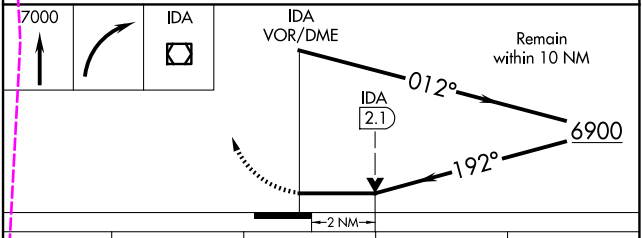
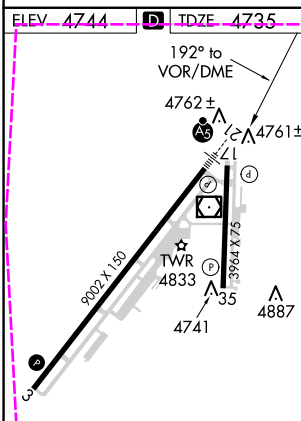
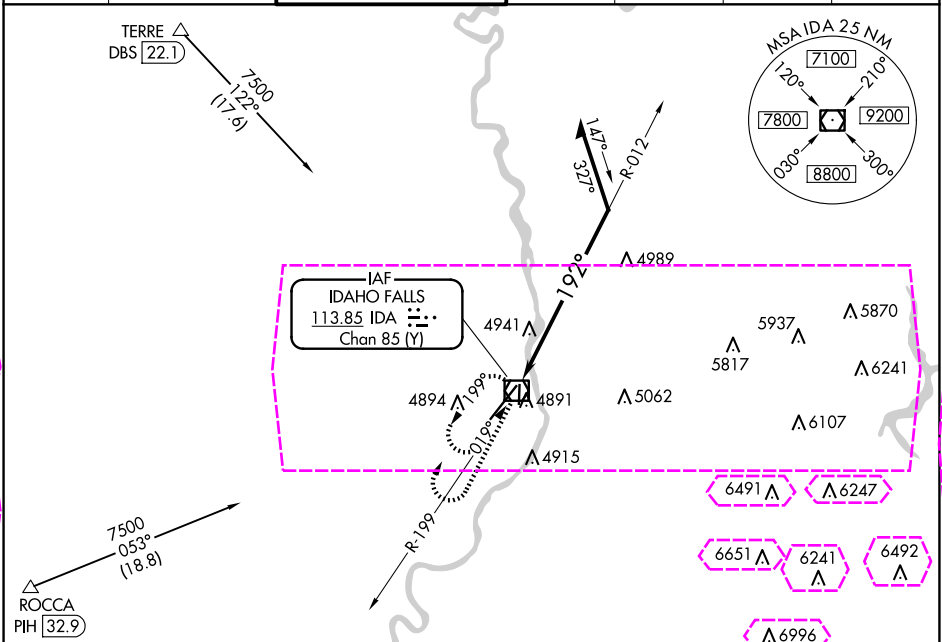
VOR RWY 21  
IDAHO FALLS RGNL (IDA)

**⚠** For inop ALS increase S-21 Cats C/D visibility to 1½ SM.

**MALSR**

MISSED APPROACH: Climb to 7000 then right turn direct IDA VOR/DME and hold.

ATIS <b>135.325</b>	SALT LAKE CENTER <b>128.35 239.25</b>	IDAHO FALLS TOWER ★ <b>118.5 (CTAF) 0 257.8</b>	GND CON <b>121.7</b>	CLNC DEL <b>121.7</b>	GCO <b>121.725</b>	UNICOM <b>122.95</b>
------------------------	--	--	-------------------------	--------------------------	-----------------------	-------------------------



CATEGORY	A	B	C	D
S-21	5400/24	665 (700-½)	5400-1½	665 (700-1½)
<b>CIRCLING</b>	5400-1	656 (700-1)	5400-1⅞ 656 (700-1⅞)	5420-2¼ 676 (700-2¼)

IDAHO FALLS, IDAHO  
Amdt 10B 03JAN19

43°31'N-112°04'W

IDAHO FALLS RGNL (IDA)  
VOR RWY 21

NW-1, 10 JUL 2025 to 07 AUG 2025

NW-1, 10 JUL 2025 to 07 AUG 2025

IDAHO FALLS RGNL (IDA)  
VOR RWY 21

NW-1, 07 AUG 2025 to 04 SEP 2025