

IDAHO FALLS, IDAHO

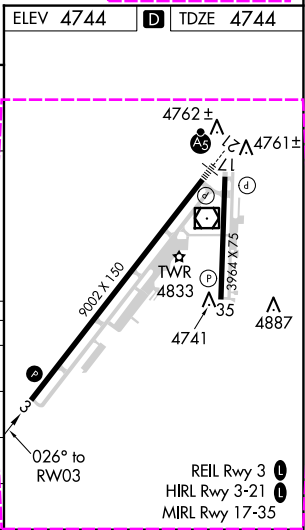
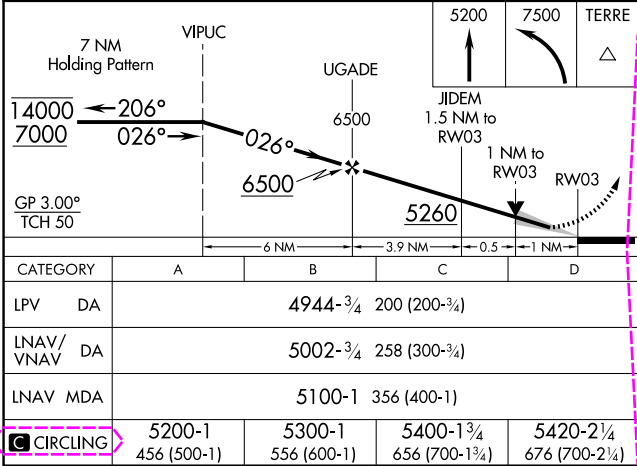
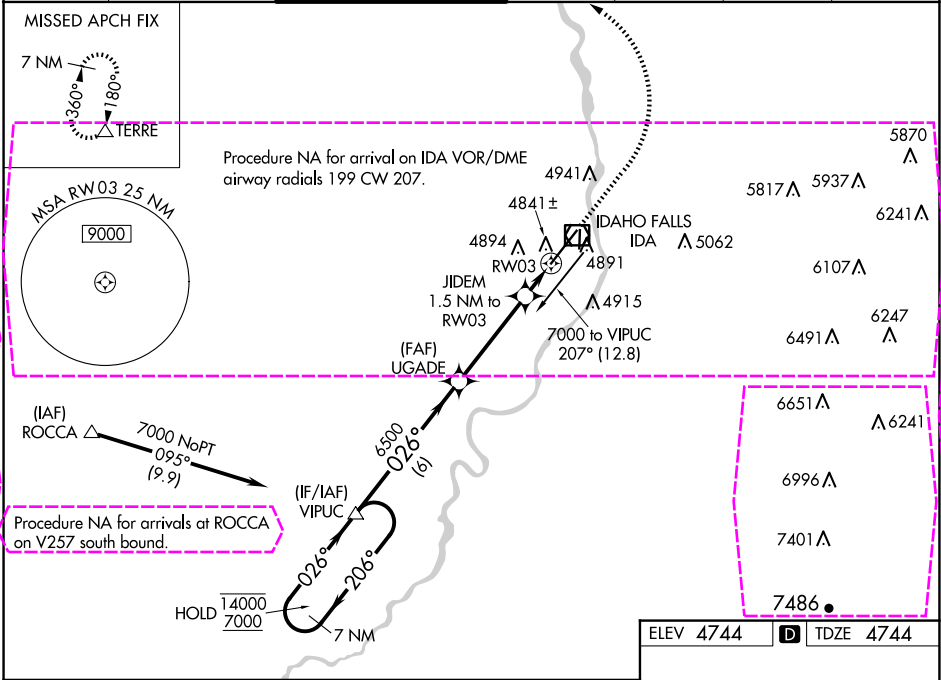
AL-590 (FAA)

22139

| | | |
|--|------------------------|---|
| WAAS CH 97501 W03A | APP CRS 026° | Rwy Idg 9002 TDZE 4744 Apt Elev 4744 |
|--|------------------------|---|

RNAV (GPS) Y RWY 3
IDAHO FALLS RGNL (IDA)

| | | | | | | |
|---|--|---|-------------------------|--------------------------|-----------------------|-------------------------|
| RNP APCH-GPS. | | MISSED APPROACH: Climb to 5200 then climbing left turn to 7500 direct TERRE and hold. | | | | |
| ▼ Circling to Rwy 35 NA at night. ▲ For uncompensated Baro-VNAV systems, LNAV/VNAV NA below -27°C or above 54°C. | | | | | | |
| ATIS 135.325 | SALT LAKE CENTER 128.35 239.25 | IDAHO FALLS TOWER* 118.5 (CTAF) 0 257.8 | GND CON 121.7 | CLNC DEL 121.7 | GCO 121.725 | UNICOM 122.95 |



IDAHO FALLS, IDAHO
Amdt 2A 19MAY22

43°31'N-112°04'W

IDAHO FALLS RGNL (IDA)
RNAV (GPS) Y RWY 3

NW-1, 10 JUL 2025 to 07 AUG 2025

NW-1, 10 JUL 2025 to 07 AUG 2025

IDAHO FALLS, IDAHO

AL-590 (FAA)

25219

| | | |
|--|------------------------|---|
| WAAS CH 97501 W03A | APP CRS 026° | Rwy Ldg 9002 TDZE 4744 Apt Elev 4744 |
|--|------------------------|---|

RNAV (GPS) Y RWY 3

IDAHO FALLS RGNL (IDA)

RNP APCH-GPS.

▼

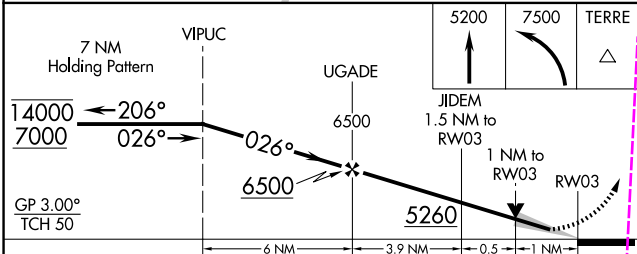
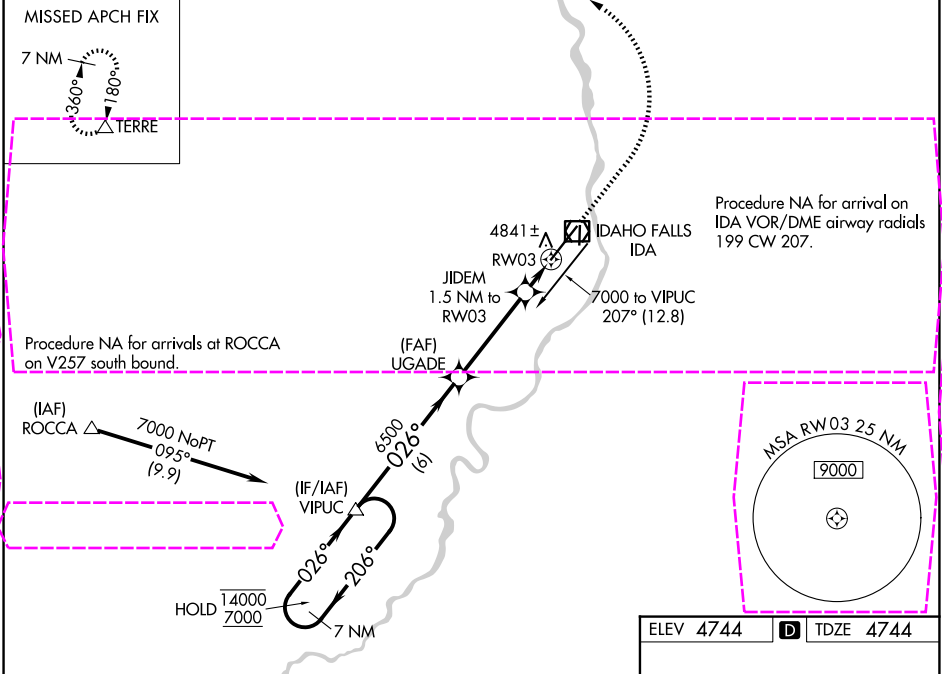
⚠

Circling to Rwy 35 NA at night.

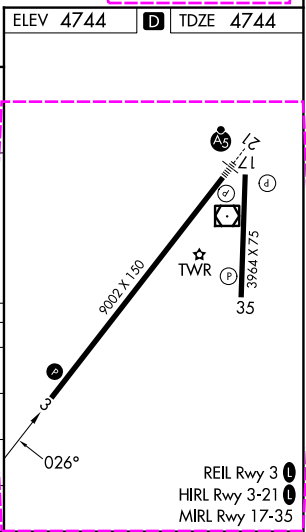
For uncompensated Baro-VNAV systems, LNAV/VNAV NA below -27°C or above 54°C.

MISSED APPROACH: Climb to 5200 then climbing left turn to 7500 direct TERRE and hold.

| | | | | | | |
|------------------------|--|--|-------------------------|--------------------------|-----------------------|-------------------------|
| ATIS 135.325 | SALT LAKE CENTER 128.35 239.25 | IDAHO FALLS TOWER ★ 118.5 (CTAF) 0 257.8 | GND CON 121.7 | CLNC DEL 121.7 | GCO 121.725 | UNICOM 122.95 |
|------------------------|--|--|-------------------------|--------------------------|-----------------------|-------------------------|



| CATEGORY | A | B | C | D |
|--------------|--------------------|--------------------|----------------------|----------------------|
| LPV DA | | 4944-¾ 200 (200-¾) | | |
| LNAV/VNAV DA | | 5002-¾ 258 (300-¾) | | |
| LNAV MDA | | 5100-1 356 (400-1) | | |
| CIRCLING | 5200-1 456 (500-1) | 5300-1 556 (600-1) | 5400-1¾ 656 (700-1¾) | 5420-2¼ 676 (700-2¼) |



IDAHO FALLS, IDAHO
Amdt 2A 19MAY22

43°31'N-112°04'W

RNAV (GPS) Y RWY 3

IDAHO FALLS RGNL (IDA)

NW-1, 07 AUG 2025 to 04 SEP 2025

NW-1, 07 AUG 2025 to 04 SEP 2025