

IDAHO FALLS, IDAHO

AL-590 (FAA)

22139

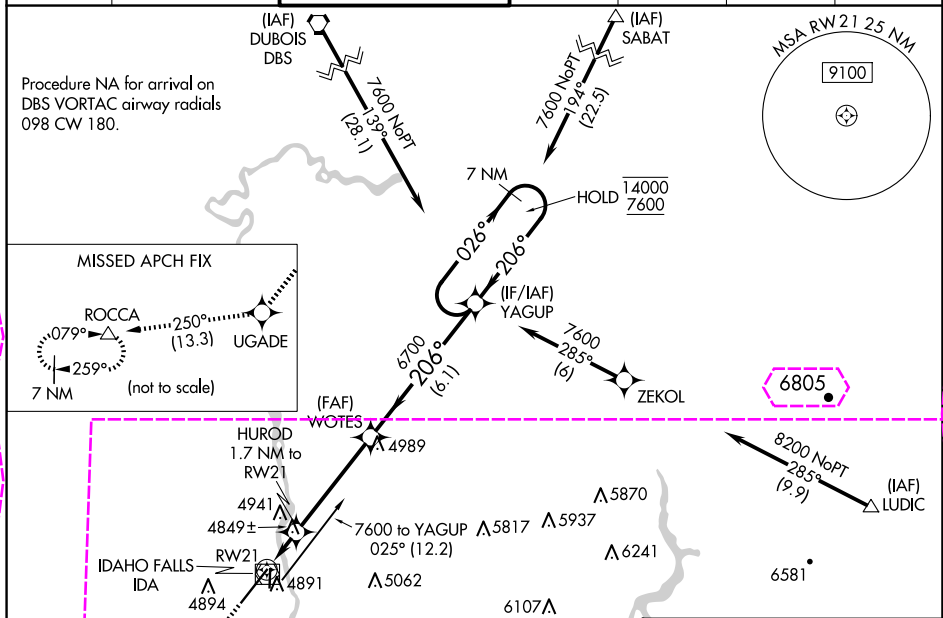
WAAS CH 40111 W21A	APP CRS 206°	Rwy Idg 9002 TDZE 4735 Apt Elev 4744
--	------------------------	---

RNAV (GPS) Y RWY 21

IDAHO FALLS RGNL (IDA)

RNP APCH-GPS.	MALSR	MISSED APPROACH: Climb to 7500 direct UGADE and on track 250° to ROCCA and hold.
Circling to Rwy 35 NA at night. For uncompensated Baro-VNAV systems, LNAV/VNAV NA below -27°C or above 54°C. For inop ALS increase LNAV/VNAV visibility all to RVR 4500, and LNAV visibility Cats C and D to RVR 5500.		

ATIS 135.325	SALT LAKE CENTER 128.35 239.25	IDAHO FALLS TOWER* 118.5 (CTAF) 0 257.8	GND CON 121.7	CLNC DEL 121.7	GCO 121.725	UNICOM 122.95
------------------------	--	---	-------------------------	--------------------------	-----------------------	-------------------------



ELEV 4744					D					TDZE 4735				
7500		UGADE		tr 250°		ROCCA								
↑		✧		△		WOTES		YAGUP		7 NM Holding Pattern				
				HUOD 1.7 NM to RW21		6700		026° → 14000		← 206° 7600				
RW21		1 NM to RW21		5320		6700		GP 3.00°		TCH 49				
NM		0.7 NM		4.3 NM		6.1 NM								
CATEGORY		A		B		C		D						
LPV		DA		4985/24		250 (300-½)								
LNAV/VNAV		DA		5016/24		281 (300-½)								
LNAV MDA		5100/24		365 (400-½)		5100/35		365 (400-¾)						
CIRCLING		5200-1 456 (500-1)		5300-1 556 (600-1)		5400-1¾ 656 (700-1¾)		5420-2¼ 676 (700-2¼)						

Diagram illustrating the approach and holding pattern for the runway.

The diagram shows the runway (RW21) and the holding pattern (7 NM Holding Pattern) with various altitudes and distances.

Key altitudes and distances shown:

- 7500 (ELEV 4744)
- UGADE (ELEV 4735)
- tr 250°
- ROCCA
- WOTES
- YAGUP
- 7 NM Holding Pattern
- HUOD 1.7 NM to RW21
- 6700
- 026° → 14000
- ← 206° 7600
- GP 3.00°
- TCH 49
- NM
- 0.7 NM
- 4.3 NM
- 6.1 NM

Diagram illustrating the approach and holding pattern for the runway.

The diagram shows the runway (RW21) and the holding pattern (7 NM Holding Pattern) with various altitudes and distances.

Key altitudes and distances shown:

- 7500 (ELEV 4744)
- UGADE (ELEV 4735)
- tr 250°
- ROCCA
- WOTES
- YAGUP
- 7 NM Holding Pattern
- HUOD 1.7 NM to RW21
- 6700
- 026° → 14000
- ← 206° 7600
- GP 3.00°
- TCH 49
- NM
- 0.7 NM
- 4.3 NM
- 6.1 NM

IDAHO FALLS, IDAHO
Amdt 2A 19MAY22

43°31'N-112°04'W

IDAHO FALLS RGNL (IDA)

RNAV (GPS) Y RWY 21

NW-1, 10 JUL 2025 to 07 AUG 2025

NW-1, 10 JUL 2025 to 07 AUG 2025

IDAHO FALLS, IDAHO

AL-590 (FAA)

25219

WAAS CH 40111 W21A	APP CRS 206°	Rwy Ldg TDZE 4735 Apt Elev 4744
--	------------------------	---

RNAV (GPS) Y RWY 21

IDAHO FALLS RGNL (IDA)

RNP APCH-GPS.

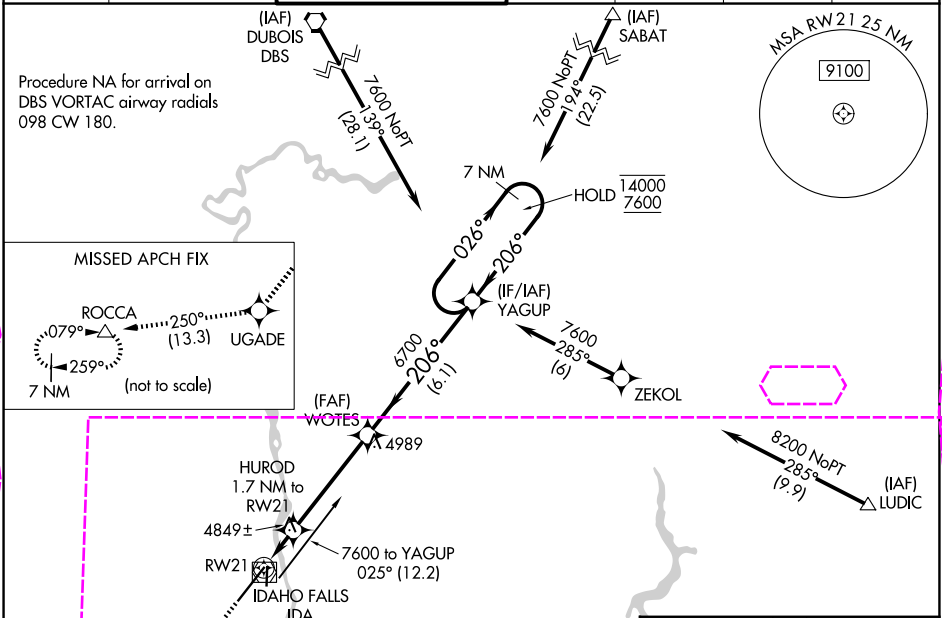
⚠

Circling to Rwy 35 NA at night. For uncompensated Baro-VNAV systems, LNAV/VNAV NA below -27°C or above 54°C. For inop ALS increase LNAV/VNAV visibility all to RVR 4500, and LNAV visibility Cats C and D to RVR 5500.

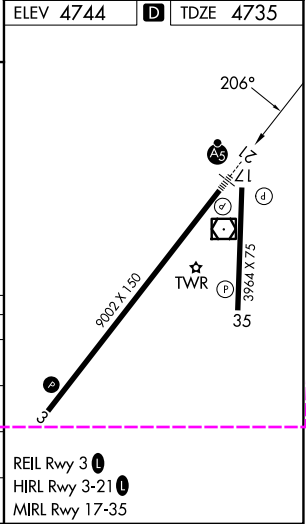
MALSR

MISSED APPROACH: Climb to 7500 direct UGADE and on track 250° to ROCCA and hold.

ATIS 135.325	SALT LAKE CENTER 128.35 239.25	IDAHO FALLS TOWER★ 118.5 (CTAF) 0 257.8	GND CON 121.7	CLNC DEL 121.7	GCO 121.725	UNICOM 122.95
------------------------	--	---	-------------------------	--------------------------	-----------------------	-------------------------



7500	UGADE	tr 250°	ROCCA	WOTES	YAGUP	7 NM Holding Pattern
1 NM to RW21	1.7 NM to RW21	6700	6700	026° → 14000	← 206° 7600	GP 3.00° TCH 49
0.7 NM	4.3 NM	6.1 NM				
CATEGORY	A	B	C	D		
LPV DA		4985/24	250 (300-½)			
LNAV/VNAV DA		5016/24	281 (300-½)			
LNAV MDA	5100/24	365 (400-½)	5100/35	365 (400-¾)		
CIRCLING	5200-1 456 (500-1)	5300-1 556 (600-1)	5400-1¾ 656 (700-1¾)	5420-2¼ 676 (700-2¼)		



IDAHO FALLS, IDAHO
Amdt 2A 19MAY22

43°31'N-112°04'W

RNAV (GPS) Y RWY 21

IDAHO FALLS RGNL (IDA)

NW-1, 07 AUG 2025 to 04 SEP 2025

NW-1, 07 AUG 2025 to 04 SEP 2025