

IDAHO FALLS, IDAHO

AL-590 (FAA)

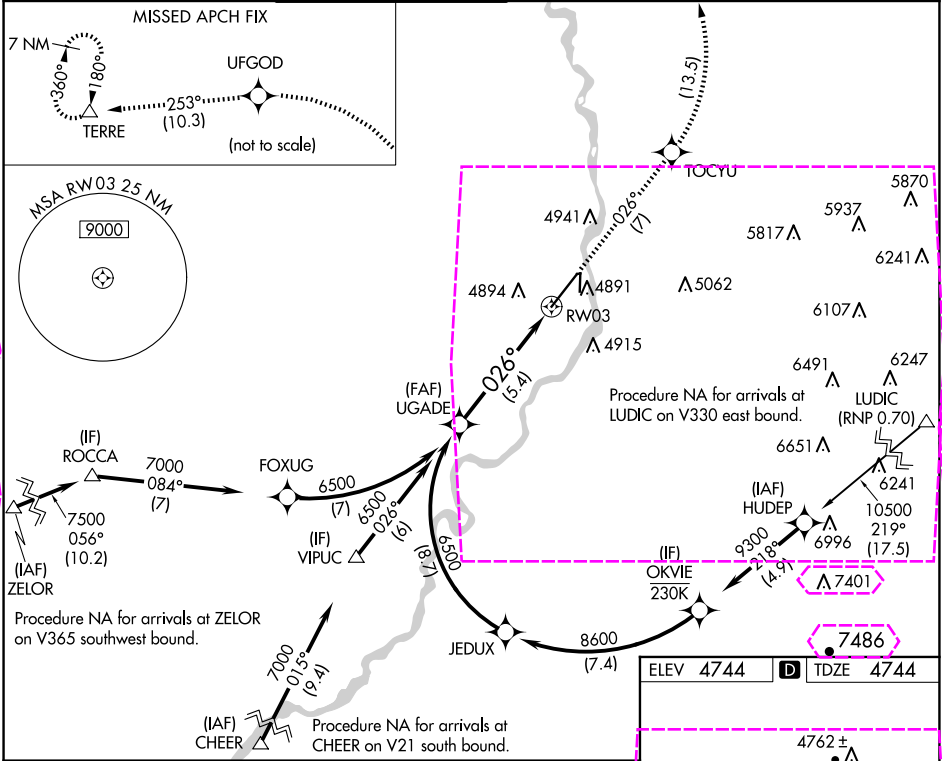
22139

APP CRS	Rwy Idg	9002
026°	TDZE	4744
	App Elev	4744

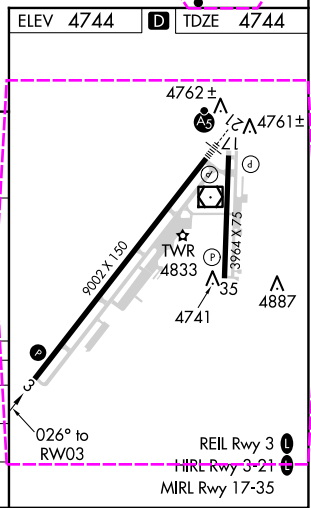
RNAV (RNP) Z RWY 3

IDAHO FALLS RGNL (IDA)

RNP AR APCH-GPS.		MISSED APPROACH: Climb to 7500 on track 026° to TOCYU, left turn to UFGOD, and on track 253° to TERRE and hold.				
For uncompensated Baro-VNAV systems, procedure NA below -27°C or above 54°C.						
ATIS	SALT LAKE CENTER	IDAHO FALLS TOWER *	GND CON	CLNC DEL	GCO	UNICOM
135.325	128.35 239.25	118.5 (CTAF) 0 257.8	121.7	121.7	121.725	122.95



<p>UGADE 6500</p> <p>6500</p> <p>GP 3.00° TCH 50</p> <p>026°</p> <p>5.4 NM</p> <p>RW03</p> <p>See planview for multiple IF locations.</p> <p>7500 ↑ tr 026°</p> <p>TOCYU </p> <p>UFGOD </p> <p>tr 253°</p> <p>TERRE </p>				
CATEGORY	A	B	C	D
RNP 0.11 DA	5050-7/8 306 (400-7/8)			
RNP 0.30 DA	5146-1 1/8 402 (500-1 1/8)			
AUTHORIZATION REQUIRED				



NW-1, 10 JUL 2025 to 07 AUG 2025

NW-1, 10 JUL 2025 to 07 AUG 2025

IDAHO FALLS, IDAHO
Amdt 1A 19MAY22

43°31'N-112°04'W

IDAHO FALLS RGNL (IDA)
RNAV (RNP) Z RWY 3

IDAHO FALLS, IDAHO

AI-590 (FAA)

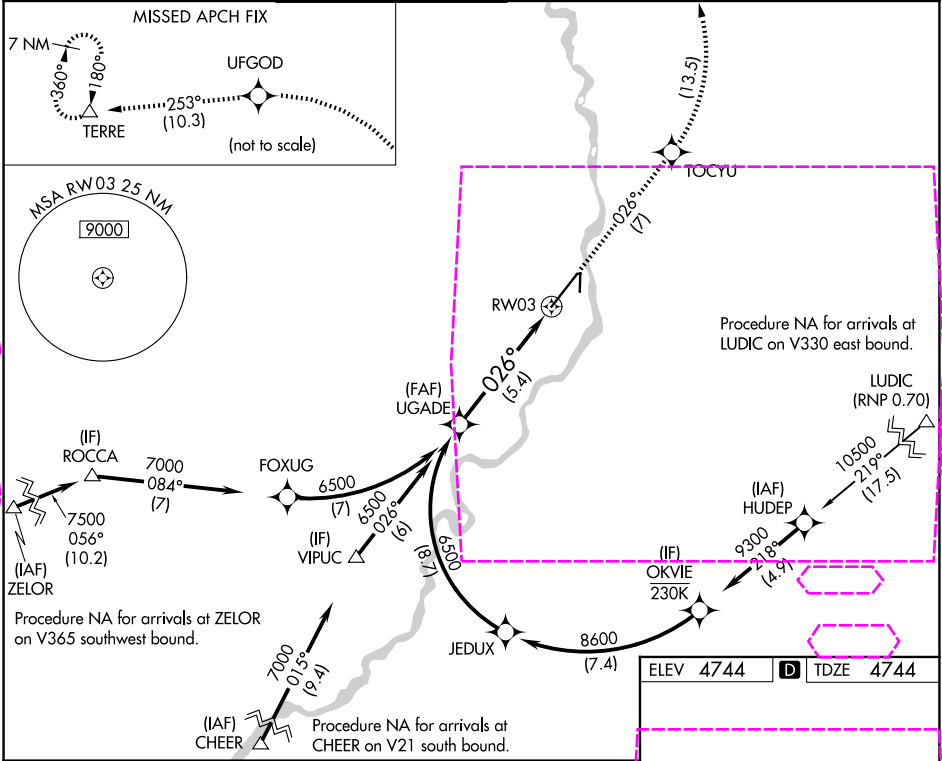
25219




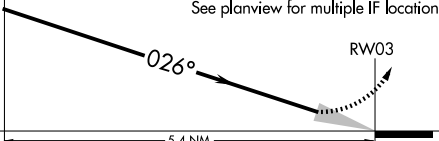
APP CRS	Rwy Ldg	9002
026°	TDZE	4744
	App Elev	4744

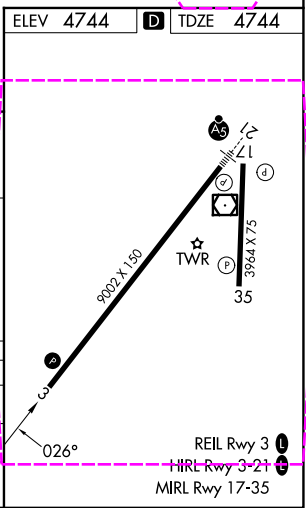
RNAV (RNP) Z RWY 3

IDAHO FALLS RGNL (IDA)

RNP AR APCH-GPS.			MISSED APPROACH: Climb to 7500 on track 026° to TOCYU, left turn to UFGOD, and on track 253° to TERRE and hold.			
For uncompensated Baro-VNAV systems, procedure NA below -27°C or above 54°C.						
ATIS	SALT LAKE CENTER	IDAHO FALLS TOWER*	GND CON	CLNC DEL	GCO	UNICOM
135.325	128.35 239.25	118.5 (CTAF) 0 257.8	121.7	121.7	121.725	122.95



UGADE		7500 ↑ tr 026°		TOCYU 				UFGOD 		tr 253°		TERRE △	
See planview for multiple IF locations.													
6500													
GP 3.00° TCH 50													
CATEGORY		A		B		C				D			
RNP 0.11 DA		5050-7⁄8				306 (400-7⁄8)							
RNP 0.30 DA		5146-1 1⁄8				402 (500-1 1⁄8)							
AUTHORIZATION REQUIRED													



NW-1, 07 AUG 2025 to 04 SEP 2025

NW-1, 07 AUG 2025 to 04 SEP 2025