

IDAHO FALLS, IDAHO

AL-590 (FAA)

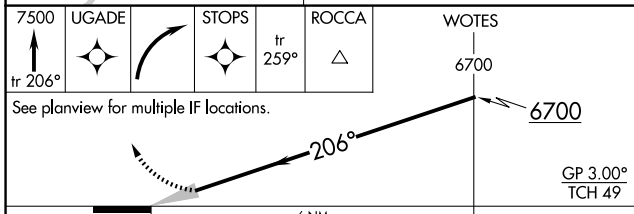
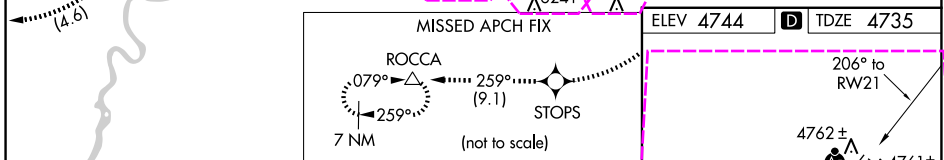
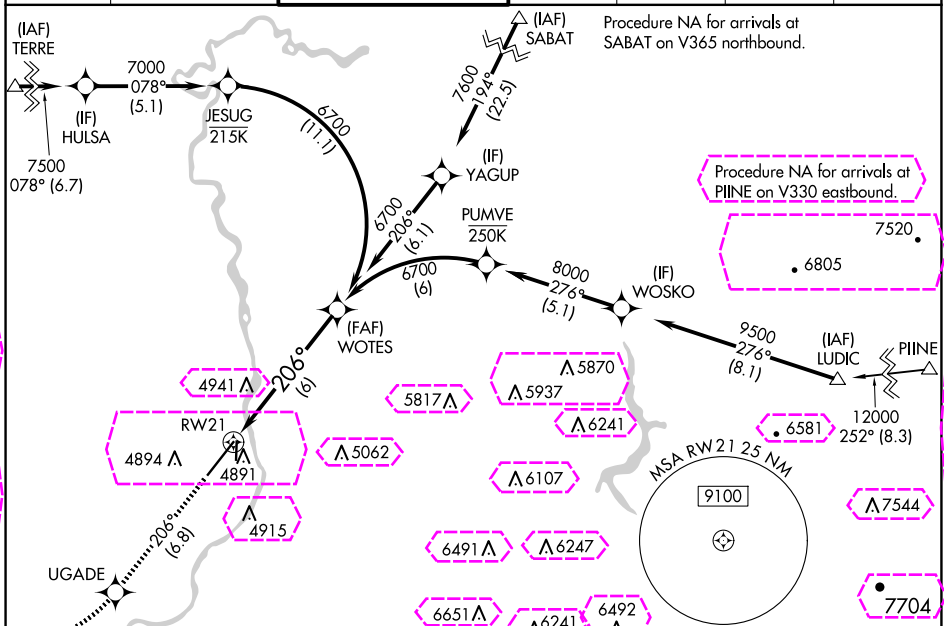
22139

APP CRS	Rwy Idg	9002
206°	TDZE	4735
	Apt Elev	4744

RNAV (RNP) Z RWY 21

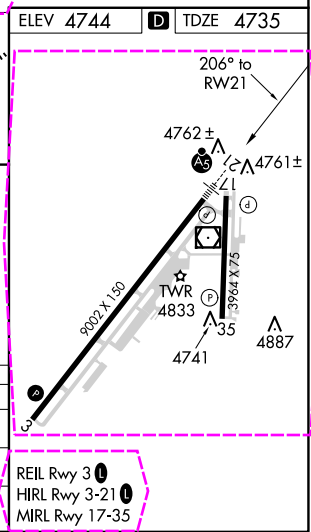
IDAHO FALLS RGNL (IDA)

RNP AR APCH-GPS.			MALSR	MISSED APPROACH: Climb to 7500 on track 206° to UGADE, right turn to STOPS, and on track 259° to ROCCA and hold.		
<div><div><div></div><div></div></div><div>For uncompensated Baro-VNAV systems, procedure NA below -27°C or above 54°C. For inop ALS, increase RNP 0.11 visibility all Cats to RVR 4500.</div></div>			<div><div></div><div>AS</div></div>			
ATIS	SALT LAKE CENTER	IDAHO FALLS TOWER★	GND CON	CLNC DEL	GCO	UNICOM
135.325	128.35 239.25	118.5 (CTAF) 0 257.8	121.7	121.7	121.725	122.95



CATEGORY	A	B	C	D
RNP 0.11 DA		5011/24	276 (300-1/2)	
RNP 0.30 DA		5120/35	385 (400-3/4)	

AUTHORIZATION REQUIRED



IDAHO FALLS, IDAHO
Amdt 1A 19MAY22

43°31'N-112°04'W

IDAHO FALLS RGNL (IDA)
RNAV (RNP) Z RWY 21

NW-1, 10 JUL 2025 to 07 AUG 2025

NW-1, 10 JUL 2025 to 07 AUG 2025

IDAHO FALLS, IDAHO


AL-590 (FAA)

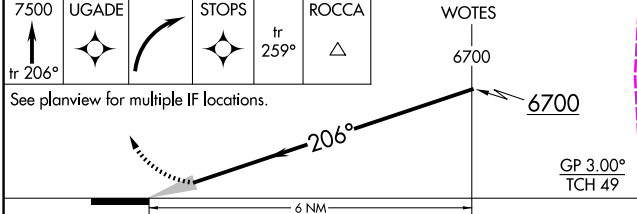
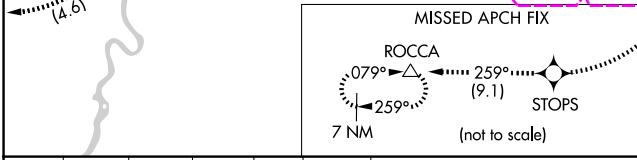
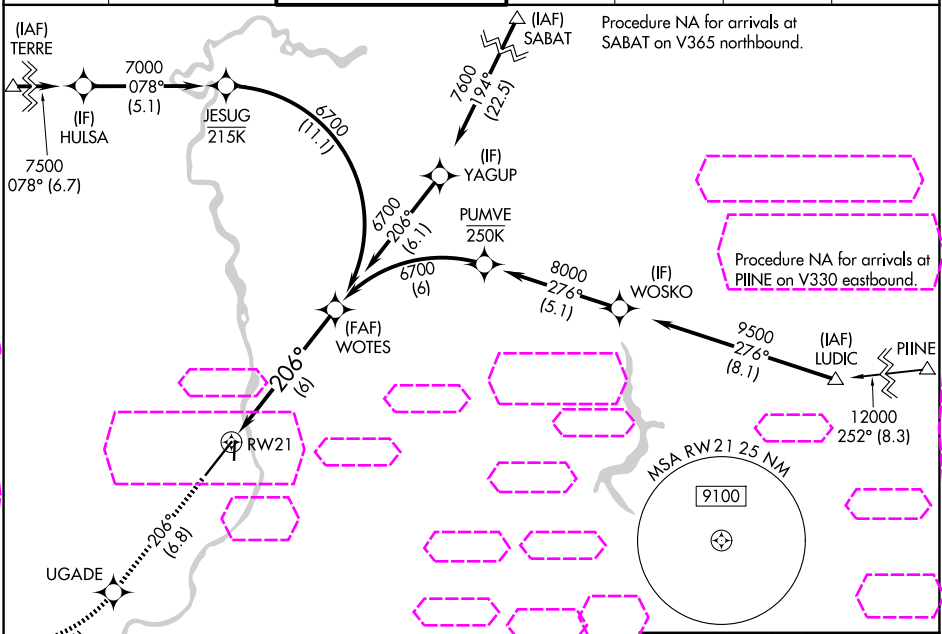
25219

APP CRS	Rwy Ldg	9002
206°	TDZE	4735
	Apt Elev	4744

RNAV (RNP) Z RWY 21

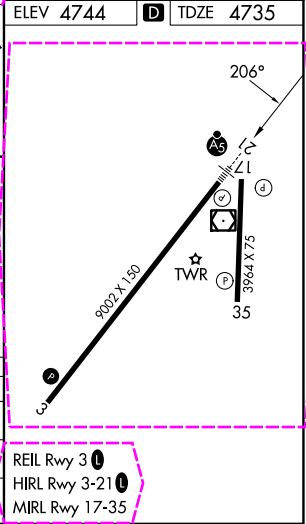
IDAHO FALLS RGNL (IDA)

RNP AR APCH-GPS.			MALSR		MISSED APPROACH: Climb to 7500 on track 206° to UGADE, right turn to STOPS, and on track 259° to ROCCA and hold.		
For uncompensated Baro-VNAV systems, procedure NA below -27°C or above 54°C. For inop ALS, increase RNP 0.11 visibility all Cnts to RVR 4500.							
ATIS	SALT LAKE CENTER	IDAHO FALLS TOWER ★	GND CON	CLNC DEL	GCO	UNICOM	
135.325	128.35 239.25	118.5 (CTAF) 0 257.8	121.7	121.7	121.725	122.95	



CATEGORY	A	B	C	D
RNP 0.11 DA		5011/24	276 (300-1/2)	
RNP 0.30 DA		5120/35	385 (400-3/4)	

AUTHORIZATION REQUIRED



IDAHO FALLS, IDAHO
Amdt 1A 19MAY22

43°31'N-112°04'W

IDAHO FALLS RGNL (IDA)
RNAV (RNP) Z RWY 21

NW-1, 07 AUG 2025 to 04 SEP 2025

NW-1, 07 AUG 2025 to 04 SEP 2025