

IDAHO FALLS, IDAHO

AL-590 (FAA)

21224

LOC/DME I-HDA 111.1 Chan 48	APP CRS 026°	Rwy Idg TDZE 4744 Apt Elev 4744
---	------------------------	---

LOC BC RWY 3
IDAHO FALLS RGNL (IDA)

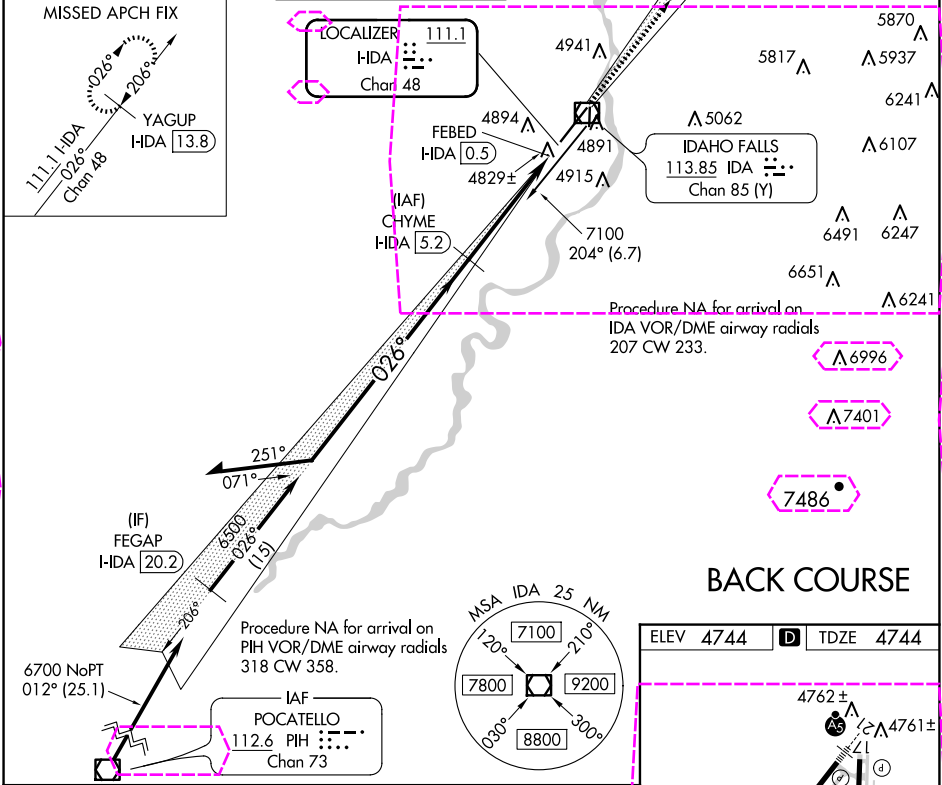
DME required.

▽

▲

MISSED APPROACH: Climb to 7000 on I-HDA localizer
NE course 026° to YAGUP/I-HDA 13.8 DME and hold.

ATIS 135.325	SALT LAKE CENTER 128.35 239.25	IDAHO FALLS TOWER* 118.5 (CTAF) 0 257.8	GND CON 121.7	CLNC DEL 121.7	GCO 121.725	UNICOM 122.95
------------------------	--	---	-------------------------	--------------------------	-----------------------	-------------------------



Disregard glide slope indications.

Remain within 15 NM

6500 206°

6500 026°

3.00° TCH 50

7000 I-HDA NE crs 026°

YAGUP I-HDA 13.8

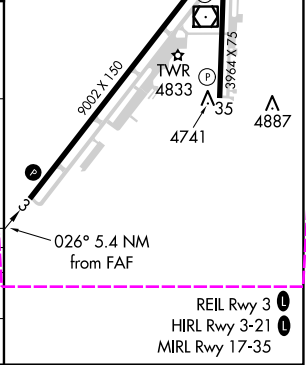
FEED I-HDA 0.5

4.7 NM

0.7

VGSI and descent angles not coincident (VGSI Angle 3.00/TCH 35).

CATEGORY	A	B	C	D	E
S-LOC 3	5080-1 336 (400-1)				
CIRCLING	5200-1 456 (500-1)	5300-1 556 (600-1)	5400-1 656 (700-1 3/4)	5420-2 676 (700-2 1/4)	5420-2 676 (700-2 1/2)



NW-1, 10 JUL 2025 to 07 AUG 2025

NW-1, 10 JUL 2025 to 07 AUG 2025

IDAHO FALLS, IDAHO

AL-590 (FAA)

25219

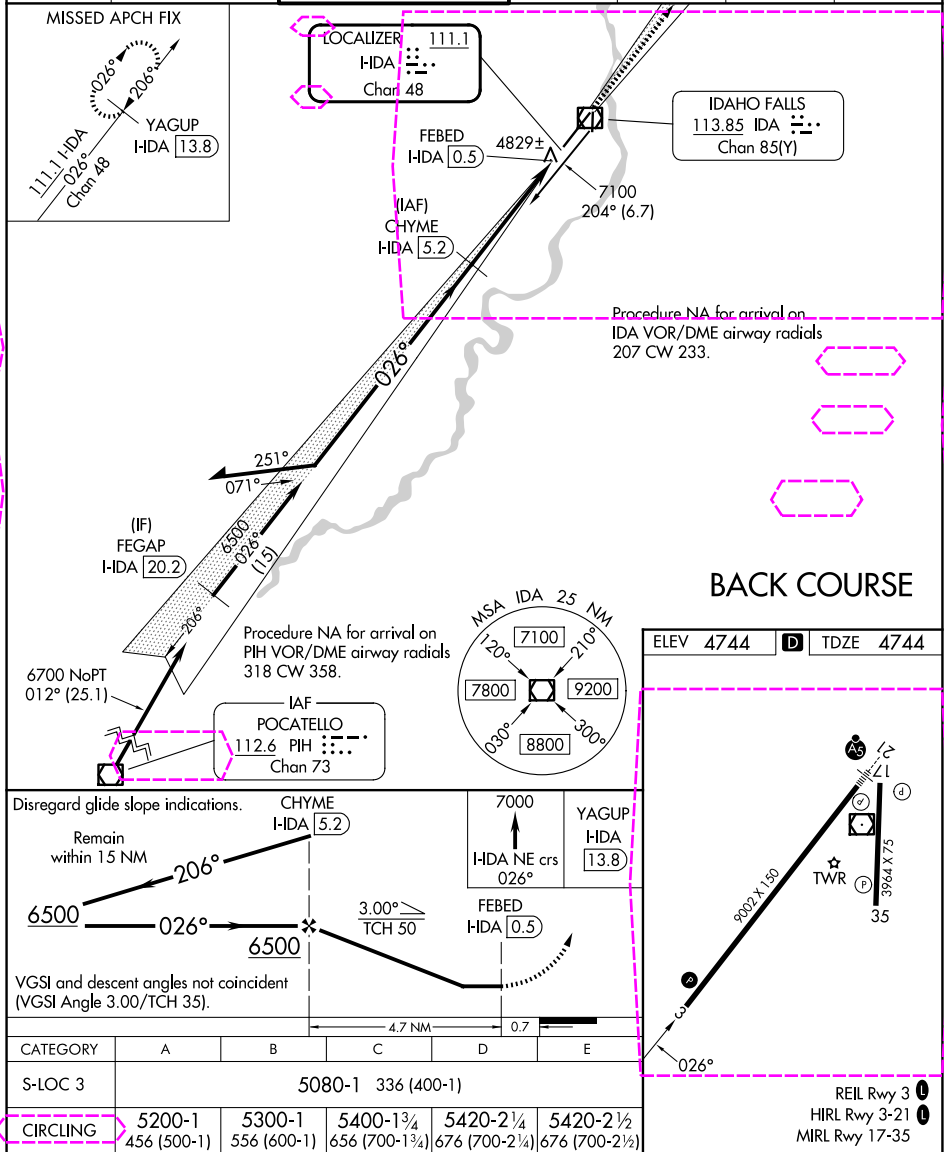
LOC/DME I-HDA 111.1 Chan 48	APP CRS 026°	Rwy Ldg 9002 TDZE 4744 Apt Elev 4744
---	------------------------	--

LOC BC RWY 3

IDAHO FALLS RGNL (IDA)

DME required.	MISSED APPROACH: Climb to 7000 on I-HDA localizer NE course 026° to YAGUP/I-HDA 13.8 DME and hold.
---------------	---

ATIS 135.325	SALT LAKE CENTER 128.35 239.25	IDAHO FALLS TOWER* 118.5 (CTAF) 0 257.8	GND CON 121.7	CLNC DEL 121.7	GCO 121.725	UNICOM 122.95
------------------------	--	---	-------------------------	--------------------------	-----------------------	-------------------------



NW-1, 07 AUG 2025 to 04 SEP 2025

NW-1, 07 AUG 2025 to 04 SEP 2025

IDAHO FALLS, IDAHO

Amdt 7 03JAN19

43°31'N-112°04'W

IDAHO FALLS RGNL (IDA)
LOC BC RWY 3