

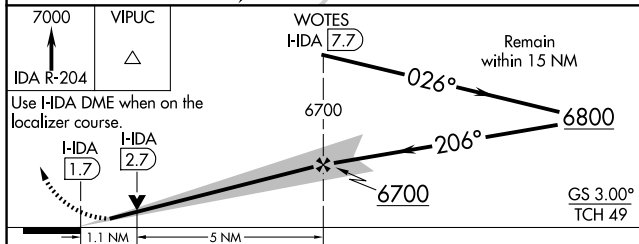
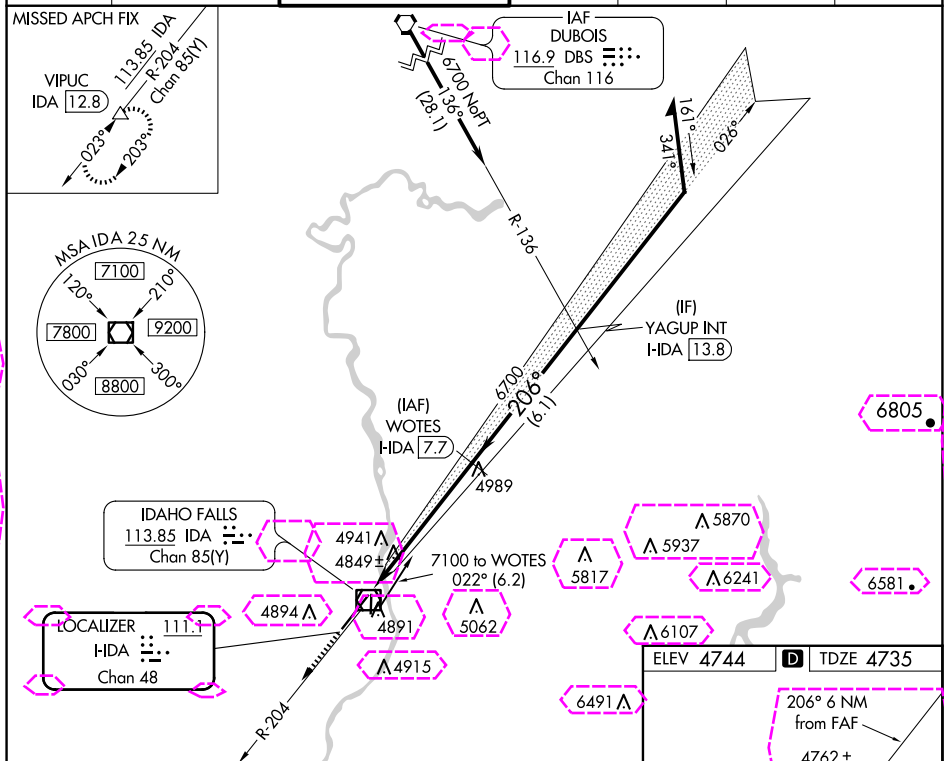



LOC/DME I-DA 111.1 Chan 48	APP CRS 206°	Rwy Idg 9002 TDZE 4735 Apt Elev 4744
--	------------------------	---

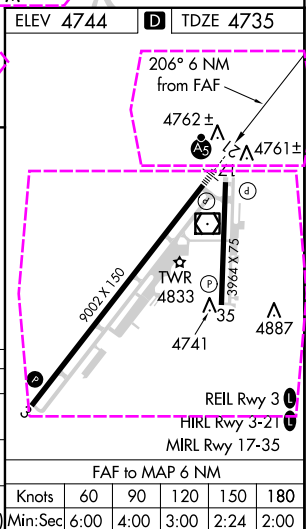
ILS or LOC RWY 21

DME required.	MALSR	MISSED APPROACH: Climb to 7000 on IDA VOR/DME R-204 to VIPUC/12.8 DME and hold.
 Circling to Rwy 35 NA at night. For inop ALS, increase S-ILS 21 Cat E visibility to RVR 4000, and S-LOC 21 Cat E visibility to RVR 6000.		

ATIS 135.325	SALT LAKE CENTER 128.35 239.25	IDAHO FALLS TOWER ★ 118.5 (CTAF) 0 257.8	GND CON 121.7	CLNC DEL 121.7	GCO 121.725	UNICOM 122.95
-----------------	-----------------------------------	---	------------------	-------------------	----------------	------------------



CATEGORY	A	B	C	D	E
S-ILS 21	4985/24 250 (300-½)				
S-LOC 21	5120/24	385 (400-½)	5120/35	385 (400-⅝)	
 CIRCLING	5200-1 456 (500-1)	5300-1 556 (600-1)	5400-1¾ 656 (700-1¾)	5420-2¼ 676 (700-2¼)	5420-2½ 676 (700-2½)



IDAHO FALLS, IDAHO
Amdt 12A 19MAY22

43°31'N-112°04'W



IDAHO FALLS RGNL (IDA)
ILS or LOC RWY 21

NW-1, 10 JUL 2025 to 07 AUG 2025

NW-1, 10 JUL 2025 to 07 AUG 2025

LOC/DME I-DA 111.1 Chan 48	APP CRS 206°	Rwy Ldg 9002 TDZE 4735 Apt Elev 4744
--	------------------------	---

ILS or LOC RWY 21
IDAHO FALLS RGNL (IDA)

DME required.	MALSR	MISSED APPROACH: Climb to 7000 on IDA VOR/DME R-204 to VIPUC/12.8 DME and hold.
 Circling to Rwy 35 NA at night. For inop ALS, increase S-ILS 21 Cat E visibility to RVR 4000, and S-LOC 21 Cat E visibility to RVR 6000.		

ATIS 135.325	SALT LAKE CENTER 128.35 239.25	IDAHO FALLS TOWER ★ 118.5 (CTAF) 0 257.8	GND CON 121.7	CLNC DEL 121.7	GCO 121.725	UNICOM 122.95
-----------------	-----------------------------------	---	------------------	-------------------	----------------	------------------

MISSED APCH FIX

VIPUC
IDA 12.8

113.85 IDA
R-204
Chan 85(Y)

023°

203°

7000

IDA R-204

VIPUC

WOTES

HDA 7.7

6700

6800

026°

206°

Remain within 15 NM

Use I-HDA DME when on the localizer course.

I-HDA 1.7

I-HDA 2.7

1.3 NM

5 NM

GS 3.00°

TCH 49

CATEGORY	A	B	C	D	E
S-ILS 21	4985/24 250 (300-½)				
S-LOC 21	5120/24 385 (400-½)	5120/35 385 (400-¾)			
CIRCLING	5200-1 456 (500-1)	5300-1 556 (600-1)	5400-1¾ 656 (700-1¾)	5420-2¼ 676 (700-2¼)	5420-2½ 676 (700-2½)

FAF to MAP 6 NM					
Knots	60	90	120	150	180
Min:Sec	6:00	4:00	3:00	2:24	2:00

IDAHO FALLS, IDAHO
Amdt 12A 19MAY22

43°31'N-112°04'W

IDAHO FALLS RGNL (IDA)
ILS or LOC RWY 21

NW-1, 07 AUG 2025 to 04 SEP 2025

NW-1, 07 AUG 2025 to 04 SEP 2025