




WAAS CH 56341 W15A	APP CRS 155°	Rwy Ldg 9000 TDZE 5523 Apt Elev 5551
--	------------------------	---

RNAV (GPS) RWY 15

BERT MOONEY (BTM)

 Circling NA northeast of Rwy 15-33. DME/DME
 RNP- 0.3 NA. For inop ALS, increase LPV all Cats
 visibility to 2 1/2 SM, increase LPV# Cat C/D
visibility to 7/8 SM. Inop table does not apply
to INAV Cats C/D.

MALSR



MISSED APPROACH: (Do not exceed 190K until 7100)
Climb to 7100 then climbing right turn to 11000 direct
CPN VOR/DME and hold, continue climb-in-hold to 11000.
#Missed approach requires minimum climb of 365 feet
per NM to 8700

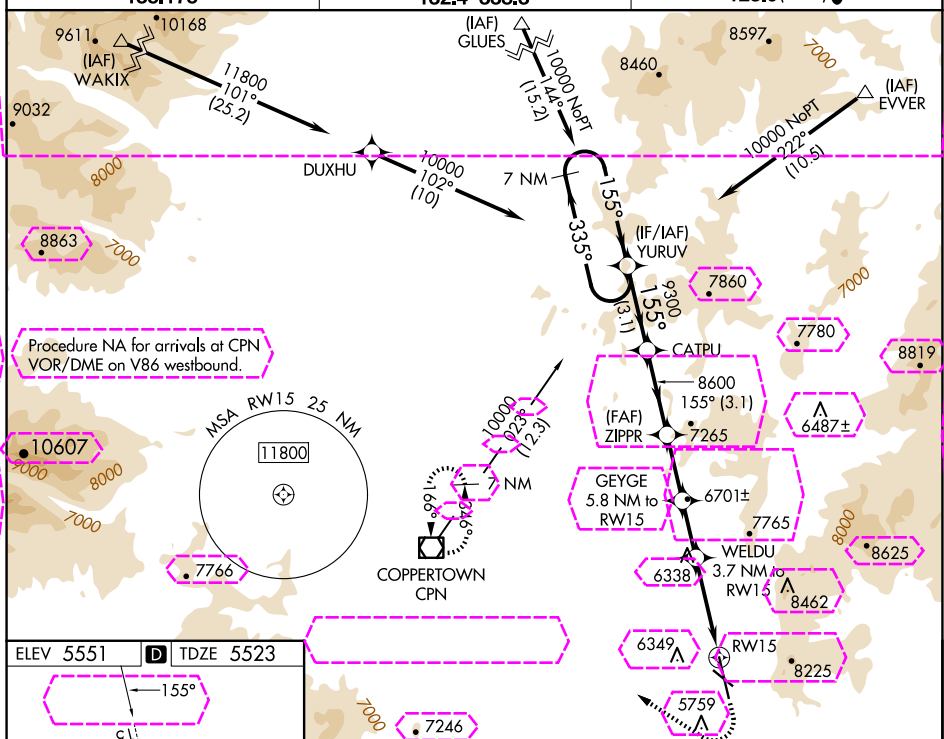
ASOS

135-175

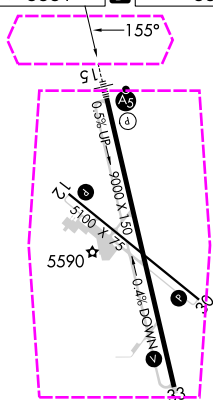
SALT LAKE CENTER

132 4 338 3

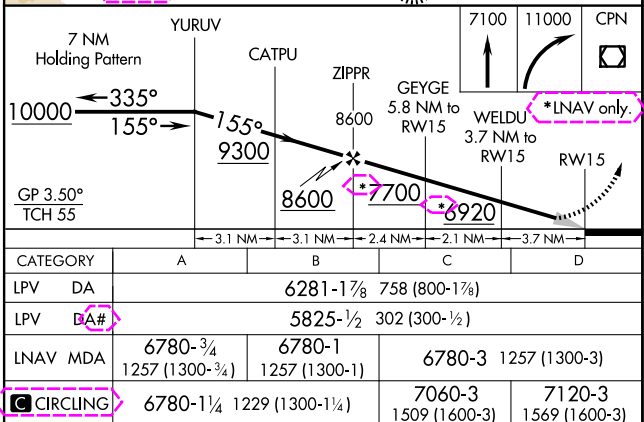
UN|COM

123.0 (CTAF) **L**

ELEV 5551	D	TDZE 5523
-----------	----------	-----------

REIL Rwy 12 and 30 **L**

MIRI Rwy 12-30 and 15-33 (L)



BUTTE, MONTANA

Orig 07DEC17

BERT MOONEY (RTM)

RNAV (GPS) RWY 15

45°57'N-112°30'W

BUTTE, MONTANA

AL-588 (FAA)

25219

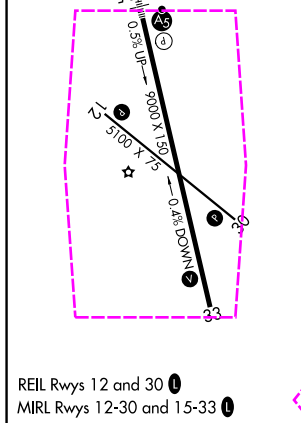
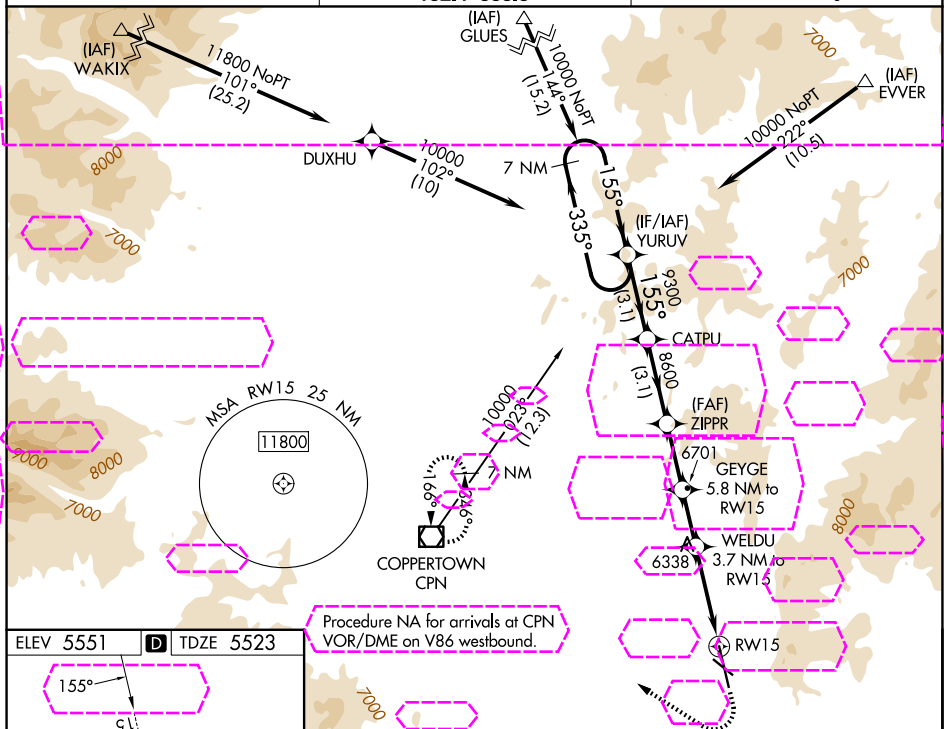
WAAS CH 56341 W15A	APP CRS 155°	Rwy Ldg TDZE 5523 Apt Elev 5551
--	------------------------	---

RNAV (GPS) RWY 15

BERT MOONEY (BTM)

RNP APCH - GPS. CIRCLING NA northeast of Rwy 15-33. For inop ALS, increase LPV all Cats visibility to 2 1/2 SM, increase LPV * Cat C/D visibility to 7/8 SM. Inop table does not apply to LNAV Cats C/D. -24°C	MALSR Climb to 7100 then climbing right turn to 11000 direct CPN VOR/DME and hold, continue climb-in-hold to 11000. *Missed approach requires minimum climb of 365 feet per NM to 8700.
--	---

ASOS 135.175	SALT LAKE CENTER 132.4 338.3	UNICOM 123.0 (CTAF) 0
------------------------	--	---------------------------------



7 NM Holding Pattern		YURUV	CATPU	ZIPPR	GEYGE	WELDU	CPN
10000		335°	155°	8600	5.8 NM to RW15	3.7 NM to RW15	
GP 3.50° TCH 55			9300	8600	7700	6920	
		3.1 NM		3.1 NM	2.4 NM	2.1 NM	3.7 NM
CATEGORY	A	B	C	D			
LPV DA	6281-1 7/8		758 (800-1 7/8)				
LPV DA*	5825-1 2		302 (300-1 2)				
LNAV MDA	6780-3/4	6780-1	6780-3		1257 (1300-3)		
	1257 (1300-3/4)	1257 (1300-1)					
CIRCLING	6780-1 1/4	1229 (1300-1 1/4)	7060-3		7120-3		
			1509 (1600-3)		1569 (1600-3)		

BUTTE, MONTANA
Orig-A 07AUG25

45°57'N-112°30'W

RNAV (GPS) RWY 15

BERT MOONEY (BTM)

NW-1, 07 AUG 2025 to 04 SEP 2025