

WACO, TEXAS

AL-579 (FAA)

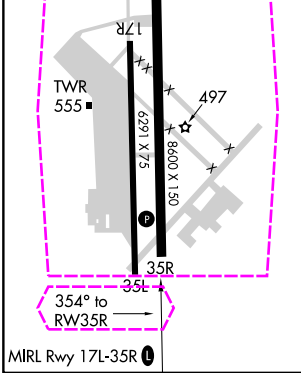
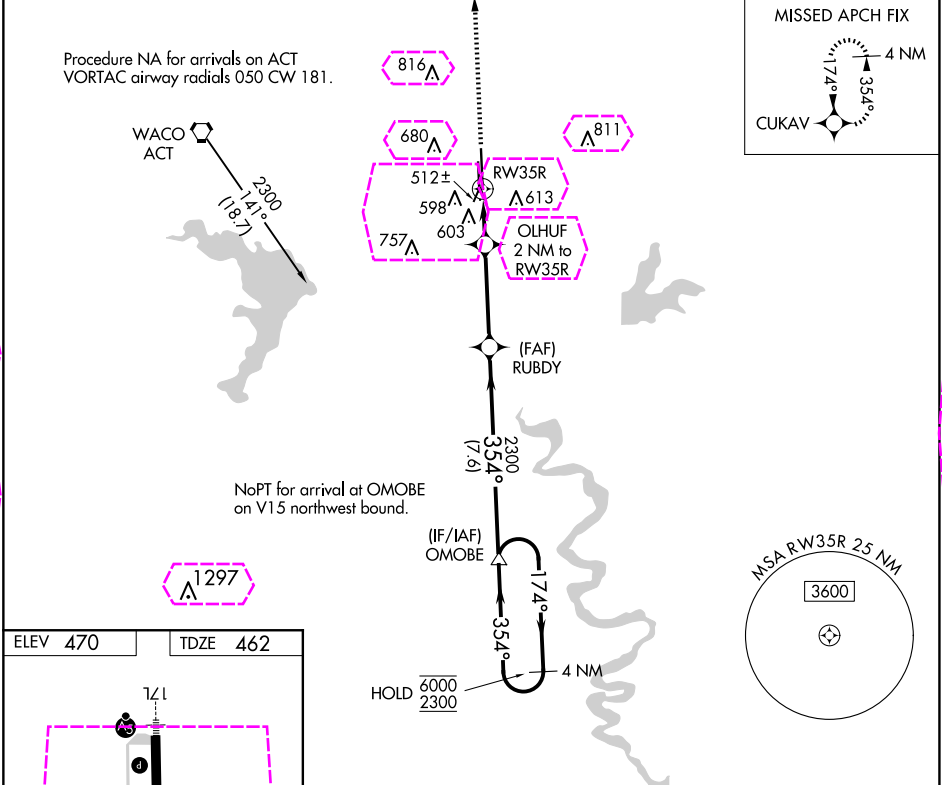
22083

WAAS CH 82731 W35A	APP CRS 354°	Rwy Idg TDZE Apt Elev	8600 462 470
--	------------------------	-----------------------------	---

RNAV (GPS) RWY 35R

TSTC WACO (CNW)

RNP APCH.		MISSED APPROACH: Climb to 2300 direct CUKAV and hold.		
<div><div></div><div>ASR</div></div>				
AWOS-3PT 134.225	WACO APP CON ★ 127.65 227.125	TSTC TOWER ★ 124.0(CTAF) 255.7	GND CON 121.70	UNICOM 122.95



2300	CUKAV	RUBDY	OMOBE	4 NM Holding Pattern
0.9 NM to RW35R	0.9 NM to RW35R	3.00° TCH 41	354°	174° → 6000 2300
0.9	1.1	3.7 NM	7.6 NM	
CATEGORY	A	B	C	D
LP MDA	780-1 318 (400-1)			
LNAV MDA	860-1 398 (400-1)		860-1½ 398 (400-1½)	

WACO, TEXAS
Amdt 2A 05DEC19

31°38'N-97°04'W

RNAV (GPS) RWY 35R

TSTC WACO (CNW)

SC-3, 10 JUL 2025 to 07 AUG 2025

SC-3, 10 JUL 2025 to 07 AUG 2025

