

WACO, TEXAS

AL-579 (FAA)

22083

WAAS CH 73020 W17A	APP CRS 174°	Rwy Idg TDZE Apt Elev	8600 470 470
--	------------------------	-----------------------------	---

RNAV (GPS) RWY 17L
TSTC WACO (CNW)

RNP APCH.

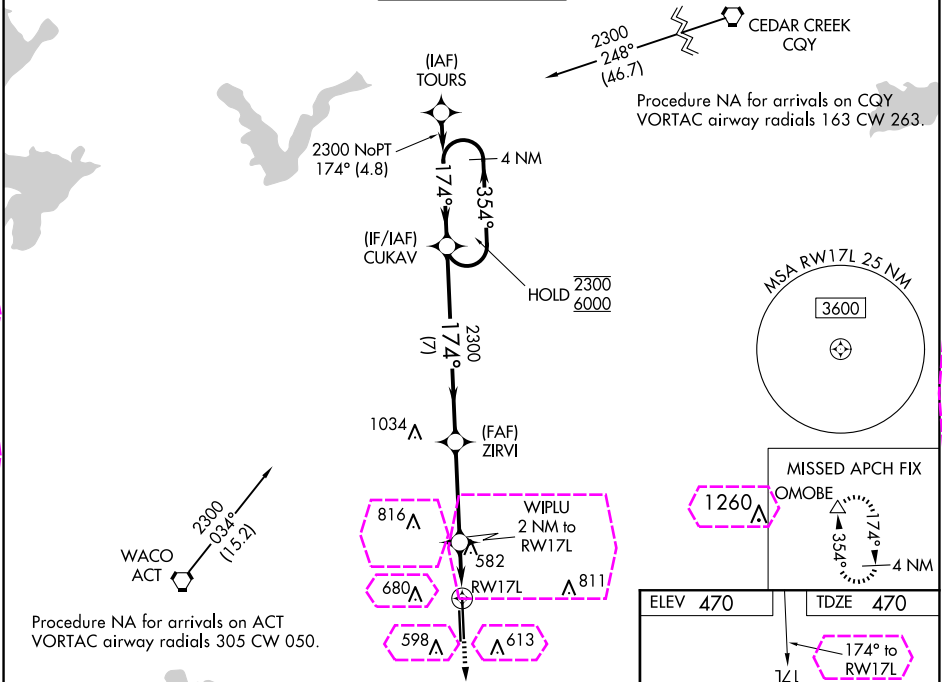
⚠

For uncompensated Baro-VNAV systems, LNAV/VNAV NA below -15°C or above 54°C. For inop ALS, increase LNAV/VNAV all Cats visibility to ¾ SM and LNAV Cats C/D visibility to 1 SM.

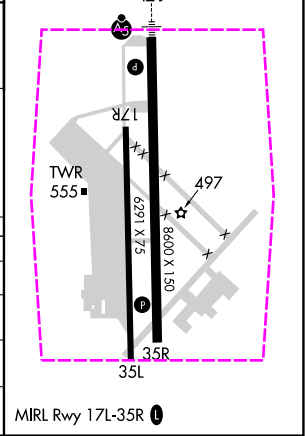
MALSR

MISSED APPROACH: Climb to 2300 direct OMOBE and hold.

AWOS-3PT 134.225	WACO APP CON ★ 127.65 227.125	TSTC TOWER ★ 124.0 (CTAF) 255.7	GND CON 121.7 0	UNICOM 122.95
----------------------------	---	---	---------------------------	-------------------------



4 NM Holding Pattern		ZIRVI 2300		2300 OMOBE
6000 ← 354°		174° →		WIPLU 2 NM to RW17L
2300		2300		*1 NM to RW17L
GP 3.00° TCH 52		7 NM		*140
CATEGORIES		A		D
LPV DA		670-½		200 (200-½)
LNAV/VNAV DA		720-½		250 (300-½)
LNAV MDA		840-½		370 (400-½)
CIRCLING		940-1		1120-2
		470 (500-1)		650 (700-2)



WACO, TEXAS


AL-579 (FAA)

25219


WAAS CH 73020 W17A	APP CRS 174°	Rwy Ldg TDZE Apt Elev	8600 470 470
--	------------------------	-----------------------------	---

RNAV (GPS) RWY 17L
TSTC WACO (CNW)

RNP APCH.



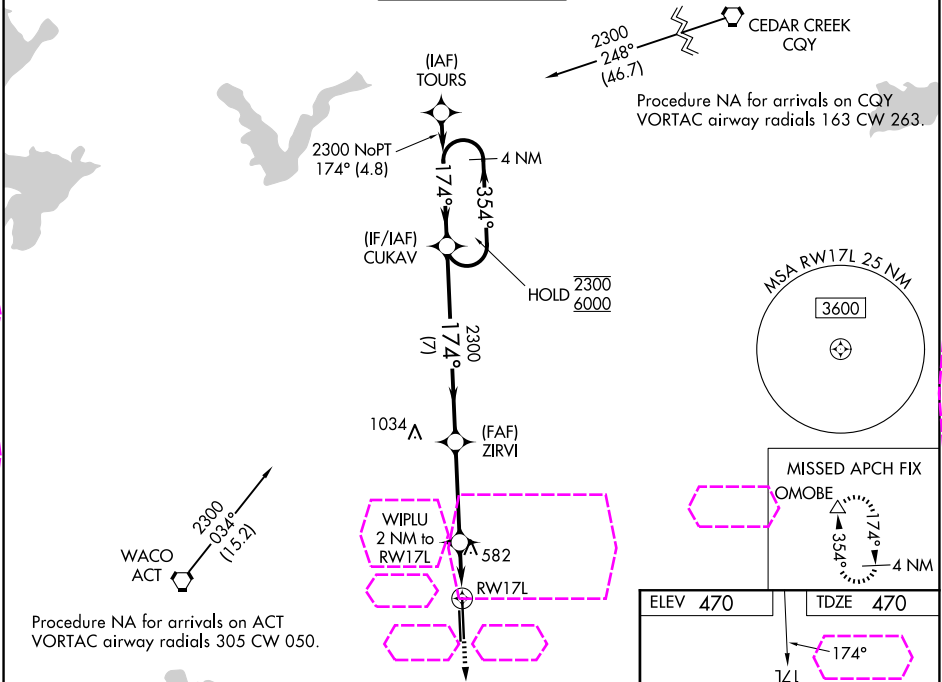
For uncompensated Baro-VNAV systems, LNAV/VNAV NA below -15°C or above 54°C. For inop ALS, increase LNAV/VNAV all Cats visibility to ¾ SM and LNAV Cats C/D visibility to 1 SM.



MAISR

MISSED APPROACH: Climb to 2300 direct OMOBE and hold.

AWOS-3PT 134.225	WACO APP CON ★ 127.65 227.125	TSTC TOWER ★ 124.0 (CTAF) 255.7	GND CON 121.7 0	UNICOM 122.95
----------------------------	---	---	---------------------------	-------------------------



4 NM Holding Pattern

CUKAV

ZIRVI

2300

WIPLU 2 NM to RW17L

2300 OMOBE

GP 3.00° TCH 52

7 NM

3.6 NM

1 NM

1 NM

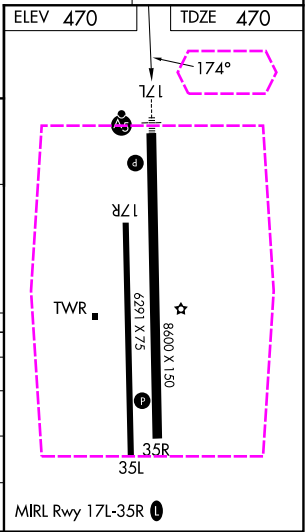
*140

*LNAV only.

*1 NM to RW17L

RW17L

CATEGORY	A	B	C	D
LPV DA		670-½	200 (200-½)	
LNAV/VNAV DA		720-½	250 (300-½)	
LNAV MDA	840-½	370 (400-½)	840-⅝	370 (400-⅝)
CIRCLING	940-1 470 (500-1)	1040-1 570 (600-1)	1040-1½ 570 (600-1½)	1120-2 650 (700-2)



WACO, TEXAS
Amdt 2 05DEC19

31°38'N-97°04'W

TSTC WACO (CNW)
RNAV (GPS) RWY 17L

SC-3, 07 AUG 2025 to 04 SEP 2025

SC-3, 07 AUG 2025 to 04 SEP 2025