

WACO, TEXAS

AL-579 (FAA)

22083

NDB ROB 400	APP CRS 356°	Rwy Idg TDZE Apt Elev	8600 462 470
-----------------------	------------------------	-----------------------------	---

NDB RWY 35R

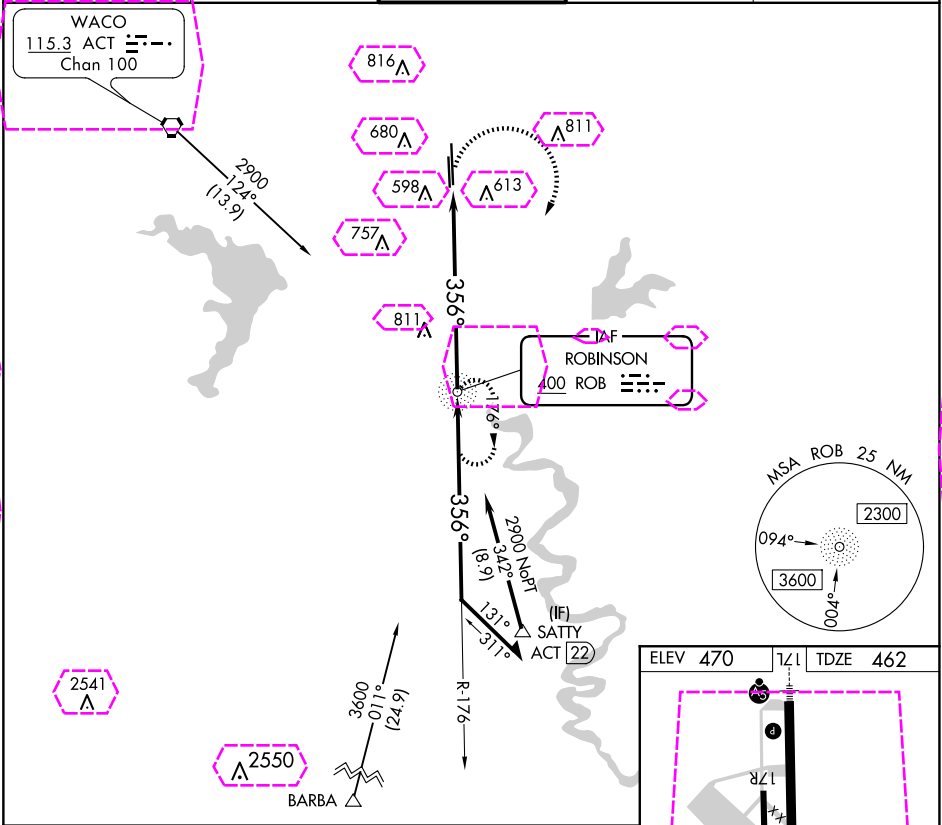
TSTC WACO (CNW)

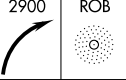


ASR


MISSED APPROACH: Climbing right turn to 2900 direct ROB NDB and hold.

AWOS-3PT 134.225	WACO APP CON ★ 127.65 227.125	TSTC TOWER ★ 124.0 (CTAF) 255.7	GND CON 121.7 0	UNICOM 122.95
----------------------------	---	---	---------------------------	-------------------------

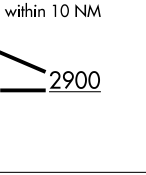




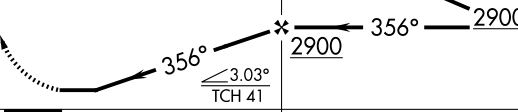
2900 ROB



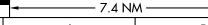
ROB NDB



Remain within 10 NM



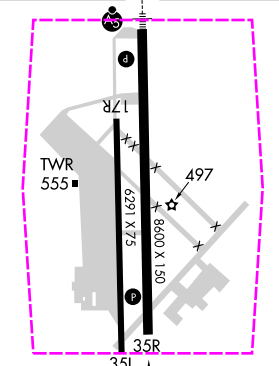
356° 2900



7.4 NM

CATEGORY	A	B	C	D
S-35R	1200-1	738 (800-1)	1200-2	738 (800-2)
CIRCLING	1200-1	730 (800-1)	1200-2 730 (800-2)	1200-2¼ 730 (800-2¼)

ELEV 470	TDZE 462
----------	----------



TWR 555

35L

356° 7.4 NM from FAF

MRL Rwy 17L-35R 0

FAF to MAP 7.4 NM

Knots	60	90	120	150	180
Min:Sec	7:24	4:56	3:42	2:58	2:28

WACO, TEXAS

Amdt 12A 05DEC19

31°38'N-97°04'W

TSTC WACO (CNW) NDB RWY 35R

SC-3, 10 JUL 2025 to 07 AUG 2025

SC-3, 10 JUL 2025 to 07 AUG 2025

WACO, TEXAS

AL-579 (FAA)

25219

NDB ROB	APP CRS	Rwy Ldg	8600
400	356°	TDZE	462
		Apt Elev	470

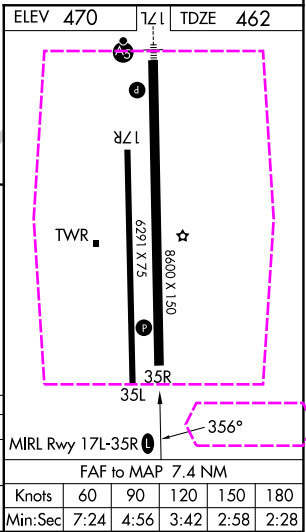
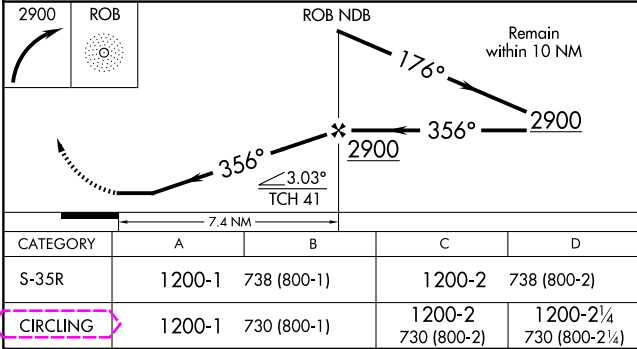
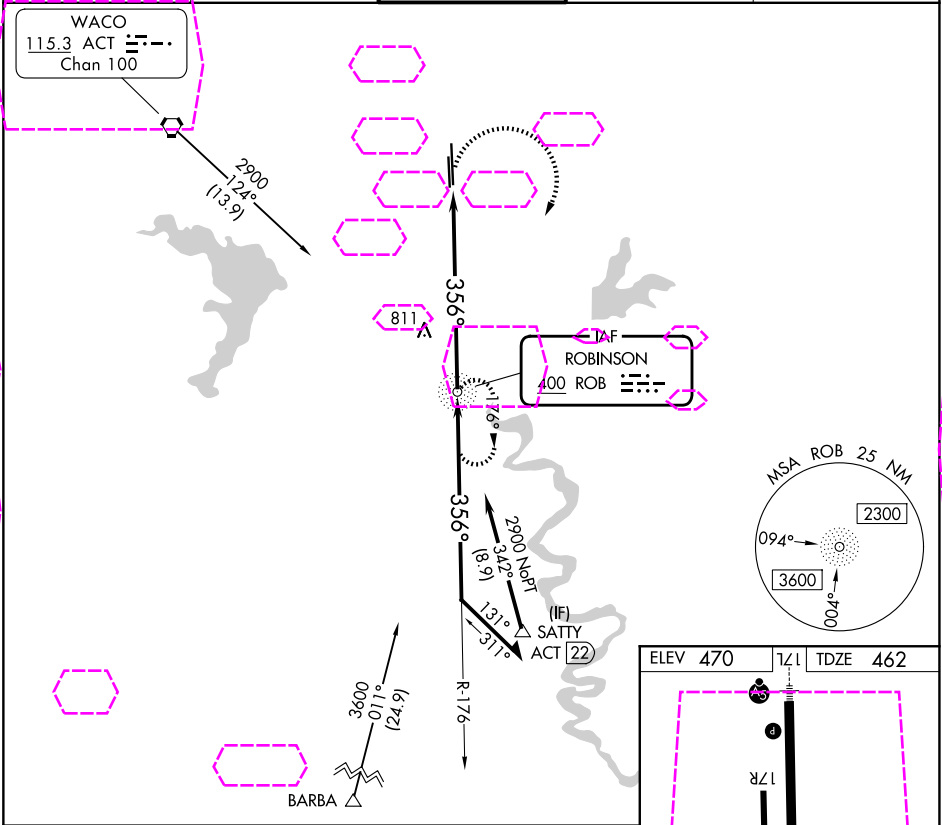
NDB RWY 35R

TSTC WACO (CNW)

ASR

MISSED APPROACH: Climbing right turn to 2900 direct ROB NDB and hold.

AWOS-3PT 134.225	WACO APP CON ★ 127.65 227.125	TSTC TOWER ★ 124.0 (CTAF) 255.7	GND CON 121.7 0	UNICOM 122.95
---------------------	----------------------------------	------------------------------------	--------------------	------------------



SC-3, 07 AUG 2025 to 04 SEP 2025

SC-3, 07 AUG 2025 to 04 SEP 2025

WACO, TEXAS

Amdt 12A 05DEC19

31°38'N-97°04'W

TSTC WACO (CNW)

NDB RWY 35R