

(SLOAO.SLOAO1) 25163

AL-571 (FAA)

# SLOAO ONE ARRIVAL (RNAV)

ORLANDO, FLORIDA

RNAV 1 - DME/DME/IRU or GPS.

RADAR required.

ORLANDO APP CON  
124.8 307.0  
ISM ATIS  
128.775  
LEE ATIS  
134.325  
MCO D-ATIS ARR  
121.25  
ORL ATIS  
127.25  
SFB ATIS  
125.975  
TIX ATIS  
120.625

LEESBURG  
INTL

ORLANDO  
SANFORD INTL

ORLANDO  
APOPKA

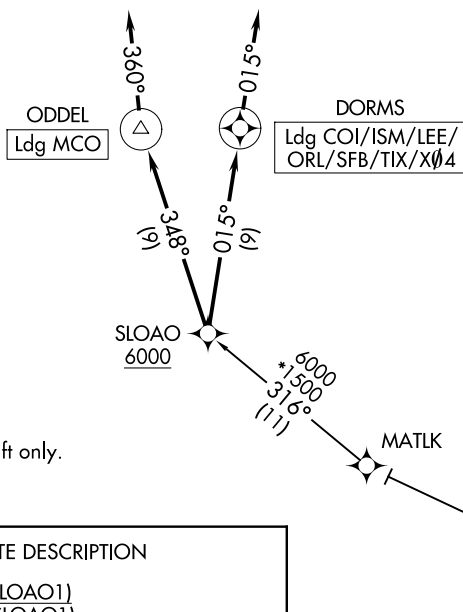
EXEC

ORLANDO  
INTL

SPACE COAST  
RGNL

KISSIMMEE  
GATEWAY

MERRITT  
ISLAND



NOTE: Turboprop aircraft only.

## ARRIVAL ROUTE DESCRIPTION

CCLUB TRANSITION (CCLUB.SLOAO1)  
MATLK TRANSITION (MATLK.SLOAO1)

LANDING COI/LEE/X04/SFB/ISM/TIX/ORL: From SLOAO on track 015° to DORMS, then on track 015°. Expect RADAR vectors to final approach course.

LANDING MCO: From SLOAO on track 348° to ODDEL, then on track 360°. Expect RADAR vectors to final approach course.

NOTE: Chart not to scale.

# SLOAO ONE ARRIVAL (RNAV)

ORLANDO, FLORIDA

(SLOAO.SLOAO1) 12JUN25

SE-3, 10 JUL 2025 to 07 AUG 2025

SE-3, 10 JUL 2025 to 07 AUG 2025

(SLOAO.SLOAO1) 25219

AL-571 (FAA)

# SLOAO ONE ARRIVAL (RNAV)

ORLANDO, FLORIDA

RNAV 1 - DME/DME/IRU or GPS.

RADAR required.

ORLANDO APP CON  
124.8 307.0  
ISM ATIS  
128.775  
LEE ATIS  
134.325  
MCO D-ATIS ARR  
121.25  
ORL ATIS  
127.25  
SFB ATIS  
125.975  
TIX ATIS  
120.625

LEESBURG  
INTL

ORLANDO  
SANFORD INTL

ORLANDO  
APOPKA

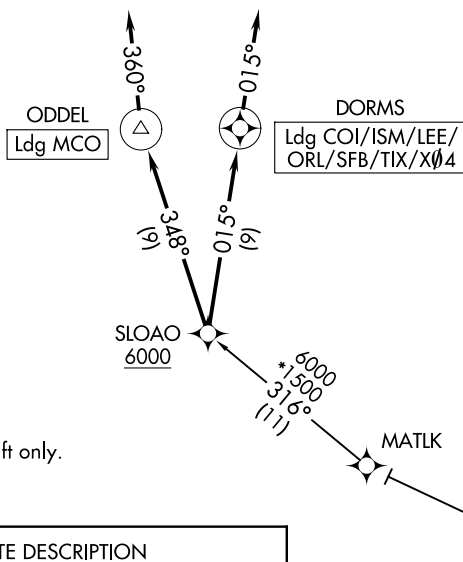
ORLANDO EXEC

ORLANDO  
INTL

SPACE COAST  
RGNL

KISSIMMEE  
GATEWAY

MERRITT  
ISLAND



NOTE: Turboprop aircraft only.

## ARRIVAL ROUTE DESCRIPTION

CCLUB TRANSITION (CCLUB.SLOAO1)  
MATLK TRANSITION (MATLK.SLOAO1)

LANDING COI/LEE/X04/SFB/ISM/TIX/ORL: From SLOAO on track 015° to DORMS, then on track 015°. Expect RADAR vectors to final approach course.

LANDING MCO: From SLOAO on track 348° to ODDEL, then on track 360°. Expect RADAR vectors to final approach course.

NOTE: Chart not to scale.

# SLOAO ONE ARRIVAL (RNAV)

ORLANDO, FLORIDA

(SLOAO.SLOAO1) 12JUN25

SE-3, 07 AUG 2025 to 04 SEP 2025

SE-3, 07 AUG 2025 to 04 SEP 2025