

WAAS CH 82313 W36B	APP CRS 005°	Rwy Idg 11621 TDZE 93 Apt Elev 96
--	------------------------	--

RNAV (GPS) RWY 36L
ORLANDO INTL (MCO)

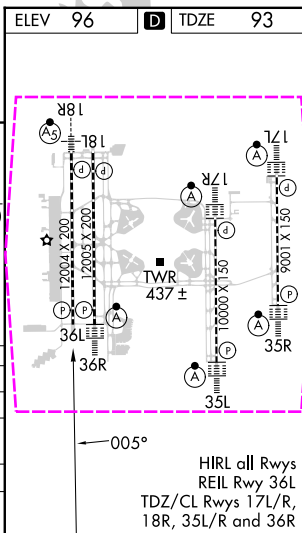
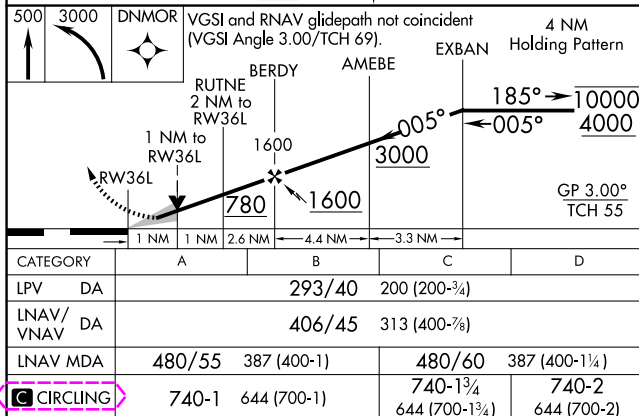
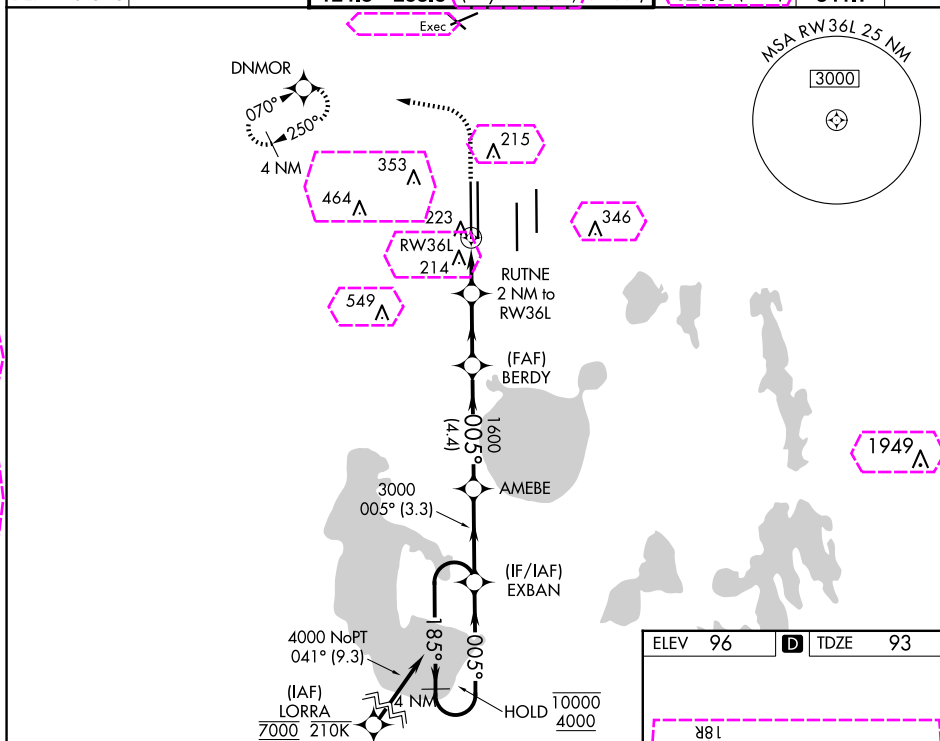
ORLANDO INTL (MCO)

RNP APCH.

T Simultaneous approach authorized. LNAV procedure NA during simultaneous operations. Use of FD or AP required during simultaneous operations. For uncompensated Baro-VNAV systems, LNAV/VNAV NA below 1°C or above 54°C.

MISSED APPROACH: Climb to 500 then climbing left turn to 3000 direct DNMOR and hold, continue climb-in-hold to 3000.

D-ATIS		ORLANDO TOWER				GND CON	CLNC DEL	CPDLC
ARR	121.25	ORLANDO APP CON	118.45	253.5	(Rwys 17L-35R, 17R-35L)	126.4 (East)	134.7	
DEP	120.525		124.3	253.5	(Rwys 18L-36R, 18R-36L)	121.8 (West)	341.7	



ORLANDO, FLORIDA
Amdt 3 22APR21

28°26'N-81°19'W

ORLANDO INTL (MCO)
RNAV (GPS) RWY 36L

ORLANDO INTL (MCO)

5) RWY 36L

SE-3, 10 JUL 2025 to 07 AUG 2025

SE-3, 10 JUL 2025 to 07 AUG 2025

WAAS CH 82313 W36B	APP CRS 005°	Rwy Ldg 11621 TDZE 93 Apt Elev 96
--	------------------------	--

RNAV (GPS) RWY 36L
ORLANDO INTL (MCO)

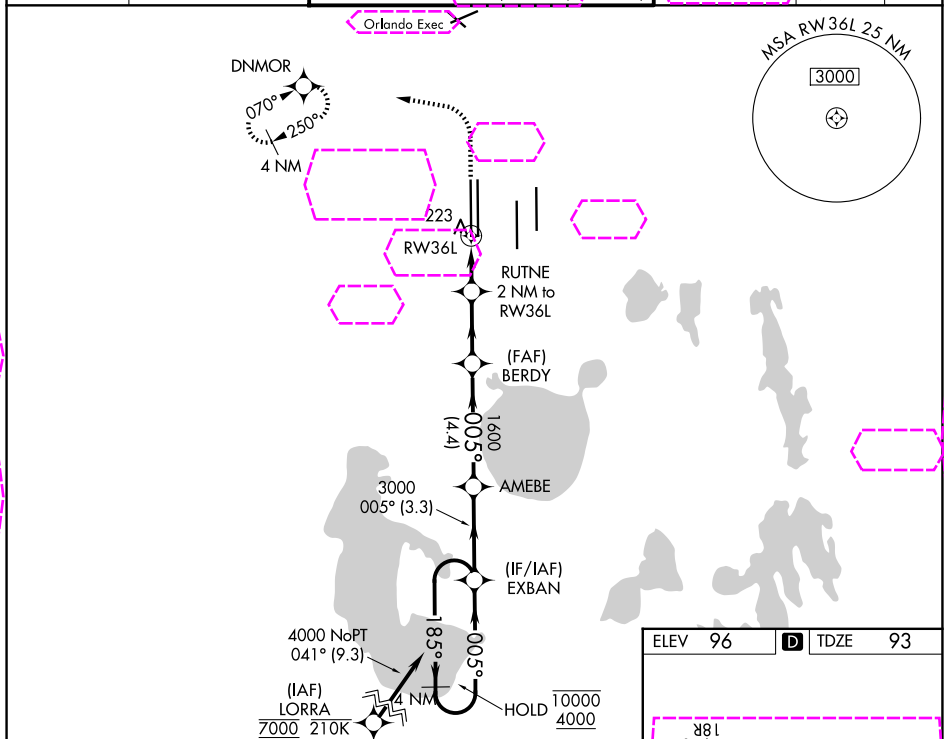
ORLANDO INTL (MCO)

RNP APCH.

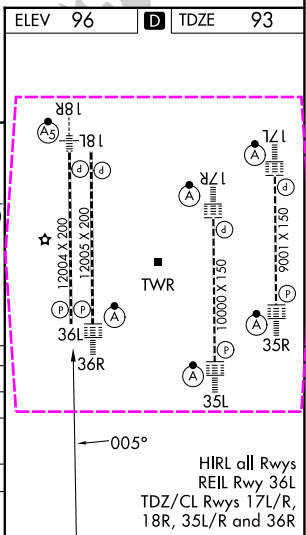
T Simultaneous approach authorized. LNAV procedure NA during simultaneous operations. Use of FD or AP required during simultaneous operations. For uncompensated Baro-VNAV systems, LNAV/VNAV NA below 1°C or above 54°C.

MISSED APPROACH: Climb to 500 then climbing left turn to 3000 direct DNMOR and hold, continue climb-in-hold to 3000.

D-ATIS		ORLANDO TOWER				GND CON		CLNC DEL		CPDLC
ARR	121.25	ORLANDO APP CON		118.45	253.5	(17L-35R, 17R-35L)		126.4 (E)	134.7	
DEP	120.525	124.8	307.0	124.3	253.5	(18L-36R, 18R-36L)		121.8 (W)	341.7	



500	3000	DNMOR	VGSI and RNAV glidepath not coincident (VGSI Angle 3.00/TCH 69).					4 NM
↑	↷	✦	EXBAN					Holding Pattern
CATEGORY		A		B		C		D
LPV DA				293/40		200 (200-¾)		
LNAV/VNAV DA				406/45		313 (400-⅞)		
LNAV MDA		480/55	387 (400-1)	480/60		387 (400-1¼)		
CIRCLING		740-1	644 (700-1)	740-1¾ 644 (700-1¾)		740-2 644 (700-2)		



ORLANDO, FLORIDA
Amdt 3 22APR21

28°26'N-81°19'W

ORLANDO INTL (MCO)
RNAV (GPS) RWY 36L