

WAAS CH 86314 W35A	APP CRS 005°	Rwy Idg 9001 TDZE 90 Apt Elev 96
--	------------------------	---

RNAV (GPS) RWY 35R

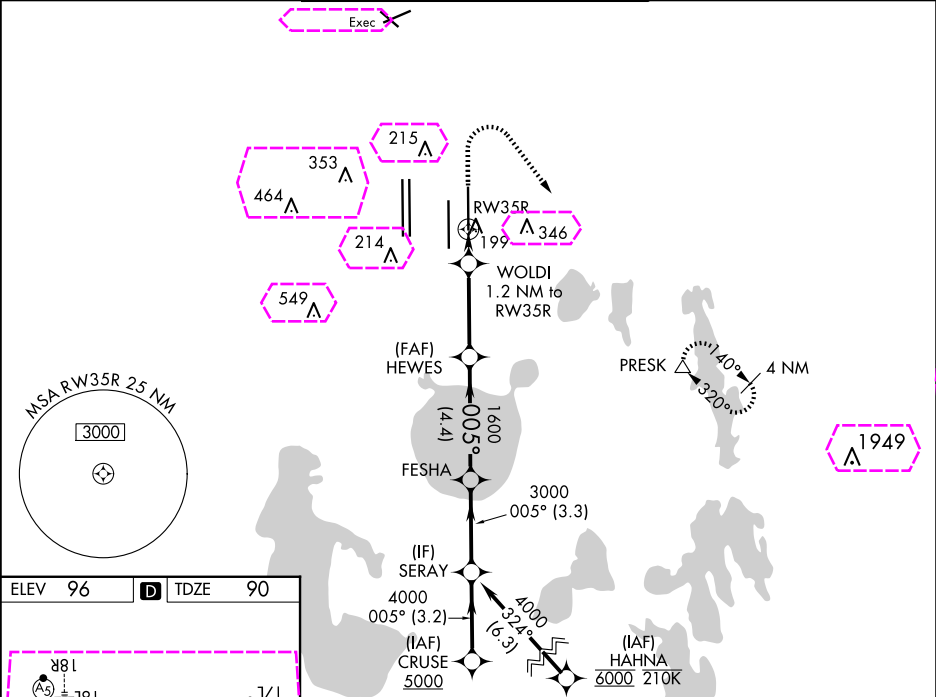
ORLANDO INTL (MCO)

RNP APCH:
Simultaneous approach authorized. LNAV procedure NA during simultaneous operations. Use of FD or AP required during simultaneous operations. For uncompensated Baro-VNAV systems, LNAV/VNAV NA below 1°C or above 54°C. For inop ALS, increase LNAV/VNAV all Cats visibility to RVR 4500, and LNAV Cats C/D visibility to RVR 5500. Bright lights on highway midway between Rwy 35L and Rwy 35R may be mistaken for runway lights.

ALSIF-2

MISSED APPROACH: Climb to 500 then climbing right turn to 3000 direct PRESK and hold, continue climb-in-hold to 3000.

D-ATIS ARR 121.25 DEP 120.525	ORLANDO APP CON 124.8 307.0	ORLANDO TOWER 118.45 253.5 (Rwys 17L-35R, 17R-35L) 124.3 253.5 (Rwys 18L-36R, 18R-36L)	GND CON 126.4 (East) 121.8 (West)	CLNC DEL 134.7 341.7	CPDLC
---	---------------------------------------	--	---	--	-------



ELEV 96 D TDZE 90

HIRL all Rwy
REIL Rwy 36L
TDZ/CL Rwys 17L/R, 18R,
35L/R, and 36R

500 3000 PRESK

VGSI and RNAV glidepath not coincident
(VGSI Angle 3.00/TCH 73).

CRUZE
5000

FESHA
3000

SERAY
4000

WOLDI
1.2 NM to RW35R

HEWES
1600

540 1600

GP 3.00°
TCH 55

CATEGORY	A	B	C	D
LPV DA	290/18	200 (200-½)		
LNAV/VNAV DA	360/24	270 (300-½)		
LNAV MDA	460/24	370 (400-½)	460/35	370 (400-¾)
CIRCLING	740-1	644 (700-1)	740-1¾ 644 (700-1¾)	740-2 644 (700-2)

ORLANDO, FLORIDA
Amdt 2A 15JUL21

28°26'N-81°19'W

ORLANDO INTL (MCO)
RNAV (GPS) RWY 35R

WAAS CH 86314 W35A	APP CRS 005°	Rwy Ldg 9001 TDZE 90 Apt Elev 96
--	------------------------	---

RNAV (GPS) RWY 35R

ORLANDO INTL (MCO)

RNP APCH:

Simultaneous approach authorized. LNAV procedure NA during simultaneous operations. Use of FD or AP required during simultaneous operations. For uncompensated Baro-VNAV systems, LNAV/VNAV NA below 1°C or above 54°C. For inop ALS, increase LNAV/VNAV all Cats visibility to RVR 4500, and LNAV Cats C/D visibility to RVR 5500. Bright lights on highway midway between Rwy 35L and Rwy 35R may be mistaken for runway lights.

ALSF-2

MISSED APPROACH: Climb to 500 then climbing right turn to 3000 direct PRESK and hold, continue climb-in-hold to 3000.

D-ATIS
ARR **121.25**
DEP **120.525**

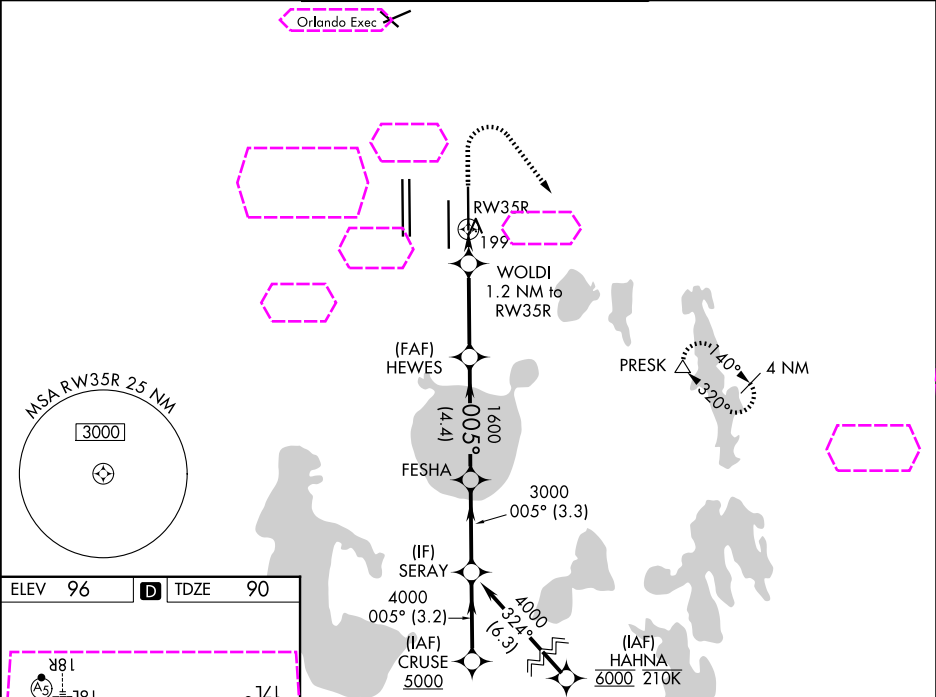
ORLANDO APP CON
124.8 307.0

ORLANDO TOWER
118.45 253.5 (17L-35R, 17R-35L)
124.3 253.5 (18L-36R, 18R-36L)

GND CON
126.4 (E)
121.8 (W)

CLNC DEL
134.7
341.7

CPDLC



ELEV 96 D TDZE 90

HIRL all Rwy
REIL Rwy 36L
TDZ/CL Rws 17L/R, 18R,
35L/R, and 36R

500 3000 PRESK

VGSi and RNAV glidepath not coincident
(VGSi Angle 3.00/TCH 73).

CRUZE 5000

SERAY 4000

FESHA 3000

WOLDI 1.2 NM to RW35R

HEWES 1600

540 1600

GP 3.00°
TCH 55

CATEGORY	A	B	C	D
LPV DA	290/18	200 (200-½)		
LNAV/VNAV DA	360/24	270 (300-½)		
LNAV MDA	460/24	370 (400-½)	460/35	370 (400-¾)
CIRCLING	740-1	644 (700-1)	740-1¾ 644 (700-1¾)	740-2 644 (700-2)

ORLANDO, FLORIDA

Amdt 2A 15JUL21

28°26'N-81°19'W

ORLANDO INTL (MCO)

RNAV (GPS) RWY 35R